

QUANTICO, VIRGINIA

# TACAN RWY 2

BRV VORTAC <b>114.5</b> Chan <b>92</b>	APCH CRS <b>022°</b>	Rwy Idg TDZE Arprt Elev <b>4250</b> <b>9</b> <b>10</b>
--	-------------------------	---

AL-339 [USN]

QUANTICO MCAF (TURNER FLD) (KNYG)

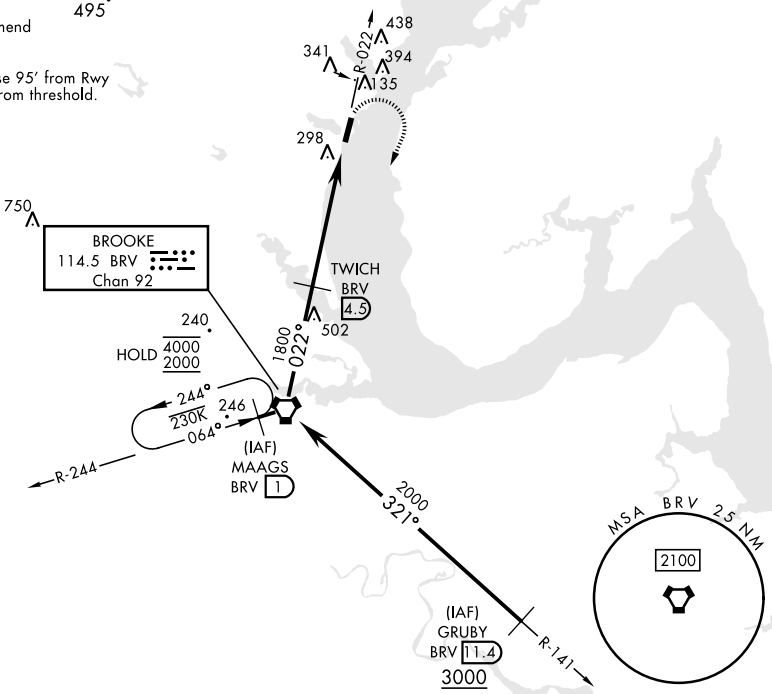
**▼** \* Circling not authorized W of Rwy 2-20.

MISSED APPROACH: Climbing right turn to 2000 direct BRV VORTAC, then via BRV R-244 to MAAGS and hold.

ATIS ★ <b>263.15</b>	POTOMAC APP/DEP CON <b>128.525 306.925</b>	TOWER ★ <b>118.6 (CTAF) 0 360.2</b>	GND CON <b>121.75 340.2</b>	ASR/PAR
-------------------------	---	--	--------------------------------	---------

CAUTION: Short intermediate, recommend early configuration.

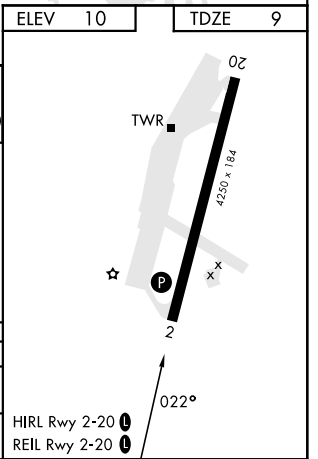
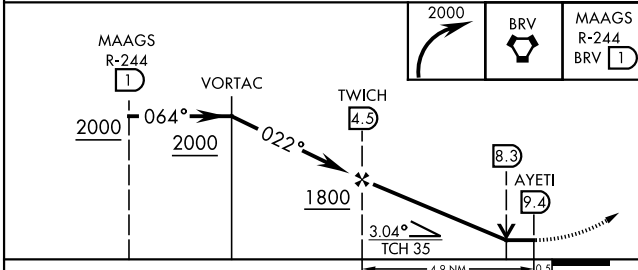
Final approach course 95° from Rwy centerline at 3000' from threshold.



NE-3, 03 OCT 2024 to 31 OCT 2024

NE-3, 03 OCT 2024 to 31 OCT 2024

EMERG SAFE ALT 100 NM 5500	ELEV 10	TDZE 9
----------------------------	---------	--------



CATEGORY	A	B	C	D
S-2	560-1	551 (600-1)	560-1½	551 (600-1½)
<b>C</b> CIRCLING*	560-1 550 (600-1)	660-1 650 (700-1)	700-2 690 (700-2)	740-2¼ 730 (800-2¼)

QUANTICO, VIRGINIA  
Amdt 4 10AUG23

38°30'N-77°18'W

QUANTICO MCAF (TURNER FLD) (KNYG)

# TACAN RWY 2