

QUANTICO, VIRGINIA

RNAV (GPS) RWY 2

| | | |
|----------|------------|------|
| APCH CRS | Rwy Idg | 4250 |
| 026° | TDZE | 9 |
| | Arprt Elev | 10 |

AL-339 (USN)

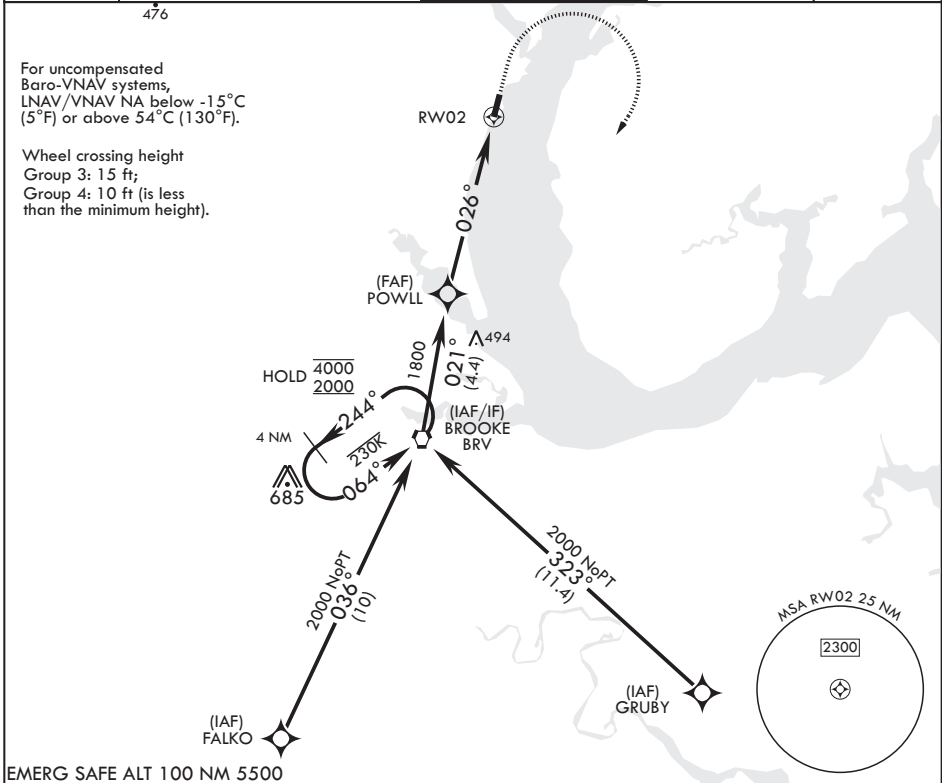
QUANTICO MCAF (TURNER FLD) (KNYG)

RNP APCH

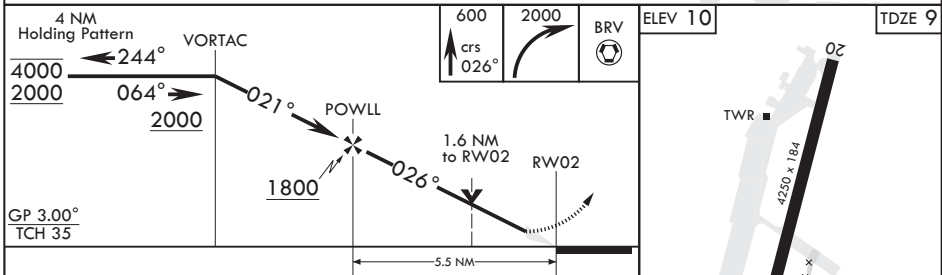
MISSED APPROACH: Climb to 600, then climbing right turn to 2000 direct BRV VORTAC and hold.

* Circling not authorized W of Rwy 2-20.

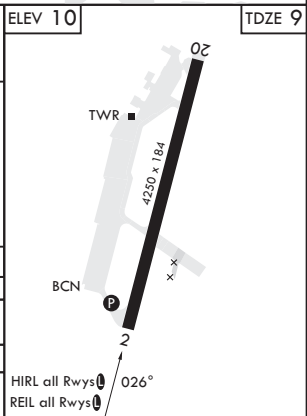
| | | | | |
|--------|-------------------------|----------------------|--------------|---------|
| ATIS* | POTOMAC APP CON/DEP CON | TOWER* | GND CON | ASR/PAR |
| 263.15 | 128.525 306.925 | 118.6 (CTAF) 0 360.2 | 121.75 340.2 | |



EMERG SAFE ALT 100 NM 5500



| CATEGORY | A | B | C | D |
|--------------------|---|---|---|---|
| LNAV/VNAV DA | 429-1 $\frac{1}{8}$ 420 (500-1 $\frac{1}{8}$) | 440-1 $\frac{1}{4}$ 431 (500-1 $\frac{1}{4}$) | 448-1 $\frac{1}{4}$ 439 (500-1 $\frac{1}{4}$) | 459-1 $\frac{1}{8}$ 450 (500-1 $\frac{1}{8}$) |
| LNAV MDA | 560-1 551 (600-1) | 660-1 650 (700-1) | 700-2 690 (700-2) | 740-2 $\frac{1}{4}$ 730 (800-2 $\frac{1}{4}$) |
| C CIRCLING* | 560-1 550 (600-1) | 660-1 650 (700-1) | 700-2 690 (700-2) | 740-2 $\frac{1}{4}$ 730 (800-2 $\frac{1}{4}$) |



NE-3, 05 SEP 2024 to 03 OCT 2024

NE-3, 05 SEP 2024 to 03 OCT 2024

QUANTICO, VIRGINIA

38°30'N - 77°18'W

QUANTICO MCAF (TURNER FLD) (KNYG)

Amdt 4 03NOV22

RNAV (GPS) RWY 2