

QUANTICO, VIRGINIA

ILS or LOC/DME RWY 2

LOC/DME I-NYG 108.3 Chan 20	APCH CRS 023°	Rwy Idg TDZE Arprt Elev 4250 9 10
--	-------------------------	---

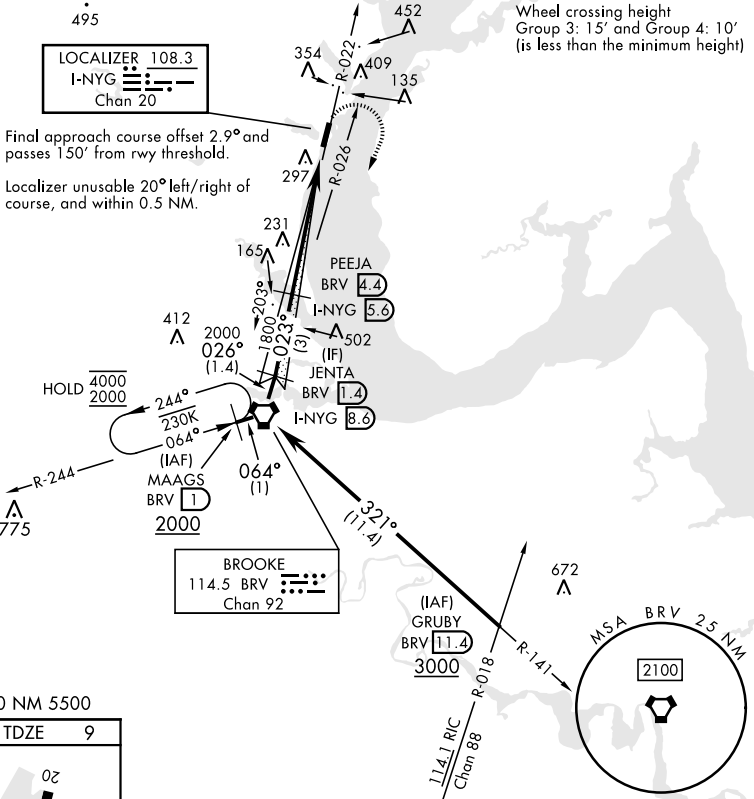
AL-339 [USN]

QUANTICO MCAF (TURNER FLD) (KNYG)

TACAN required.
* Circling not authorized W of Rwy 2-20.

MISSED APPROACH: Climbing right turn to 2000 direct BRV VORTAC, then via BRV R-244 to MAGGS and hold.

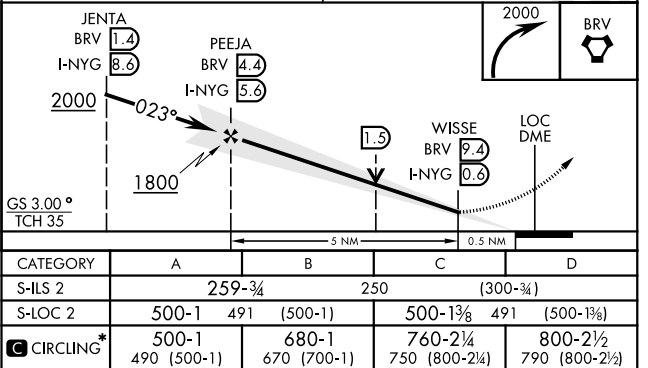
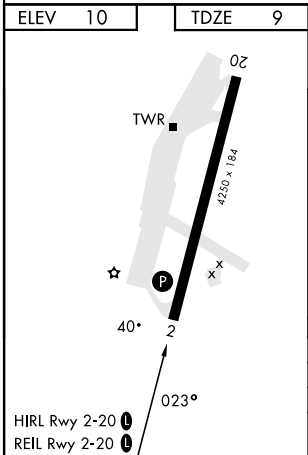
ATIS ★ 263.15	POTOMAC APP/DEP CON 128.525 306.925	TOWER ★ 118.6 (CTAF) 0360.2	GND CON 121.75 340.2	ASR/PAR
-------------------------	---	---------------------------------------	--------------------------------	---------



NE-3, 05 SEP 2024 to 03 OCT 2024

NE-3, 05 SEP 2024 to 03 OCT 2024

EMERG SAFE ALT 100 NM 5500



QUANTICO, VIRGINIA

38°30'N-77°18'W

QUANTICO MCAF (TURNER FLD) (KNYG)

Amtd 1 29DEC22

ILS or LOC/DME RWY 2