

WIPOR THREE ARRIVAL (RNAV)

NE-1, 08 AUG 2024 to 05 SEP 2024

ARRIVAL ROUTE DESCRIPTION

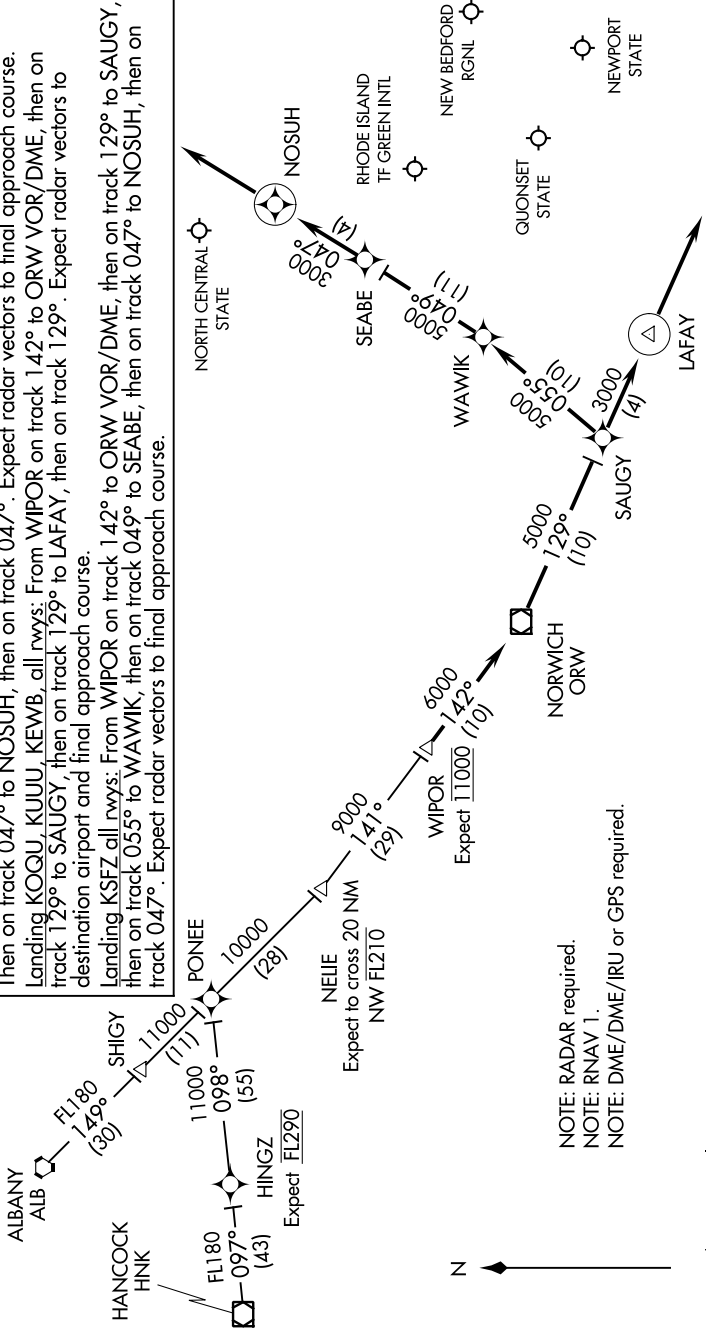
ALBANY TRANSITION (ALB. WIPOR3):
 HANCOCK TRANSITION (HNK. WIPOR3):
 HINGZ TRANSITION (HINGZ. WIPOR3):

From WIPOR on track 142° to ORW VOR/DME, then on track 129° to SAUGY.
 Landing KPVD Rwys 5, 34: From SAUGY on track 129° to LAFAY, then on track 129°.
 Expect radar vectors to final approach course.

Landing KPVD Rwys 16, 23: From SAUGY on track 055° to WAWIK, then on track 049° to SEABE.
 Then on track 047° to NOSUH, then on track 047°. Expect radar vectors to final approach course.
 Landing KOGU, KUUU, KEWB, all rwys: From WIPOR on track 142° to ORW VOR/DME, then on track 129° to SAUGY, then on track 129° to LAFAY, then on track 129°. Expect radar vectors to destination airport and final approach course.

Landing KSFZ all rwys: From WIPOR on track 142° to ORW VOR/DME, then on track 129° to SAUGY, then on track 055° to WAWIK, then on track 049° to SEABE, then on track 047° to NOSUH, then on track 047°. Expect radar vectors to final approach course.

PROVIDENCE APP CON ★
 123.675 244.875
 EWB ATIS
 126.85
 PVD D-ATIS
 124.2



NOTE: RADAR required.
 NOTE: RNAV 1.
 NOTE: DME/DME/IRU or GPS required.

NOTE: Chart not to scale.

WIPOR THREE ARRIVAL (RNAV)

NE-1, 08 AUG 2024 to 05 SEP 2024