

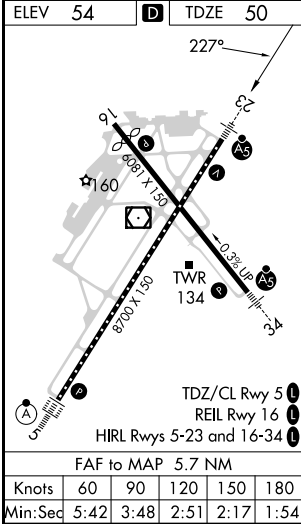
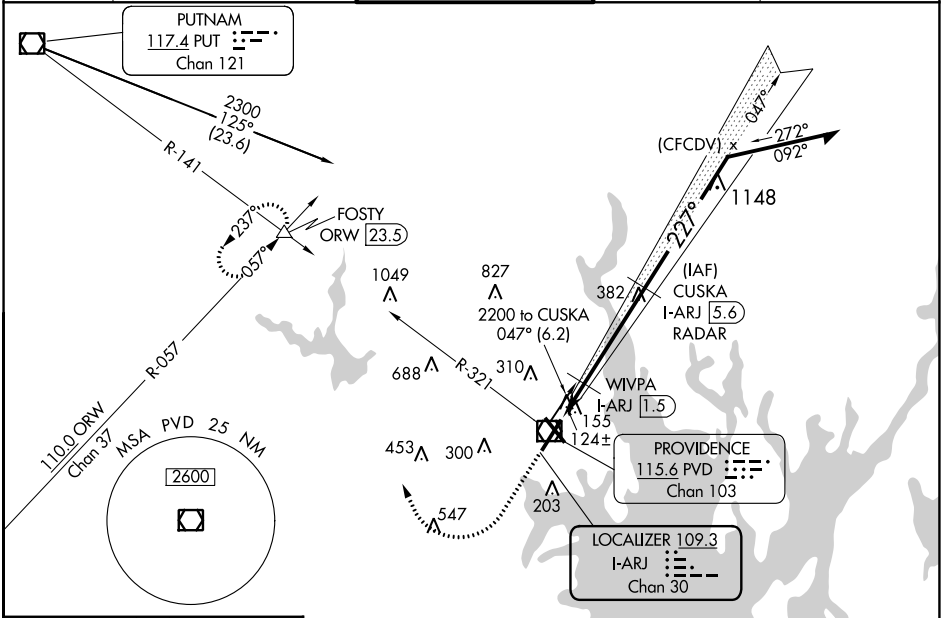
LOC/DME I-ARJ <b>109.3</b> Chan 30	APP CRS <b>227°</b>	Rwy Idg <b>8700</b> TDZE <b>50</b> Apt Elev <b>54</b>
--	------------------------	---

# ILS or LOC RWY 23

RHODE ISLAND TF GREEN INTL (PVD)

DME or RADAR required for procedure entry.		MALSR 	MISSED APPROACH: Climb to 700 then climbing right turn to 2500 on heading 350° and PVD VOR/DME R-321 to FOSTY INT/ORW 23.5 DME and hold.	
▼ **RVR 1800 authorized with use of FD or AP or HUD to DA.				

D-ATIS <b>124.2</b>	PROVIDENCE APP CON * <b>123.675 244.875</b>	PROVIDENCE TOWER * <b>120.7 (CTAF) 257.8</b>	GND CON <b>121.9 348.6</b>	CLNC DEL <b>126.65 348.6</b>
------------------------	--	---	-------------------------------	---------------------------------



VGSi and ILS glidepath not coincident (VGSi Angle 3.00/TCH 41).				
* LOC only.				
* I-ARJ 0.1, I-ARJ 0.8, WIVPA I-ARJ 1.5, I-ARJ 5.6 RADAR				
Remain within 10 NM				
CATEGORY	A	B	C	D
S-ILS 23**	250/24 200 (200-1/2)			
S-LOC 23	600/24	550 (600-1/2)	600/60	550 (600-1 1/4)
CIRCLING	600-1 546 (600-1)	640-1 586 (600-1)	640-1 1/8 586 (600-1 1/8)	860-2 1/2 806 (900-2 1/2)
WIVPA FIX MINIMUMS				
S-LOC 23	380/24	330 (400-1/2)	380/26	330 (400-1/2)
CIRCLING	560-1 506 (600-1)	640-1 586 (600-1)	640-1 1/2 586 (600-1 1/2)	860-2 1/2 806 (900-2 1/2)

NE-1, 03 OCT 2024 to 31 OCT 2024

NE-1, 03 OCT 2024 to 31 OCT 2024