

(TMBRS.TMBRS3) 24305

# TMBRS THREE ARRIVAL (RNAV) Arrival Routes

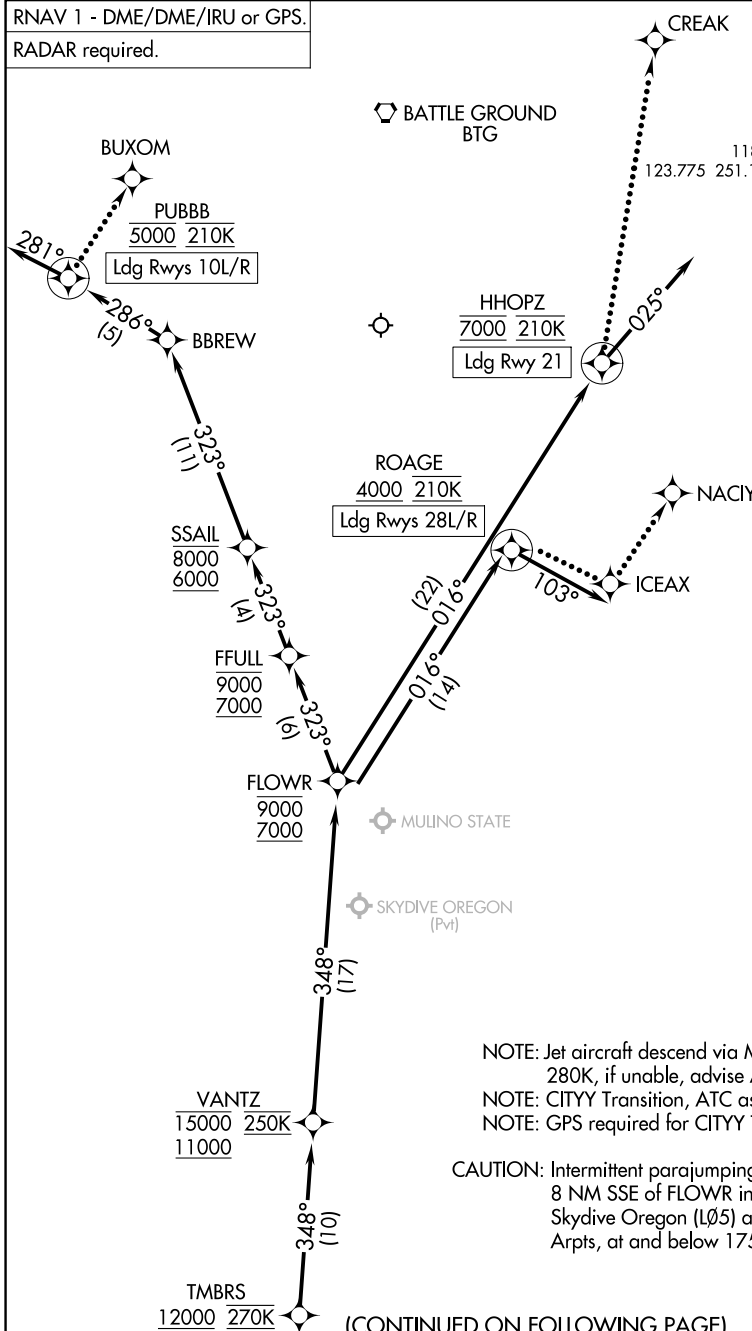
AL-330 (FAA)

PORTLAND INTL (PDX)

PORTLAND, OREGON

RNAV 1 - DME/DME/IRU or GPS.  
RADAR required.

PORTLAND APP CON  
124.35 299.2  
D-ATIS  
128.35 269.9  
GND CON  
121.9 348.6  
PORTLAND TOWER  
118.7 257.8 (Rwy 10L-28R)  
123.775 251.125 (Rwys 3-21, 10R-28L)



NW-1, 31 OCT 2024 to 28 NOV 2024

NW-1, 31 OCT 2024 to 28 NOV 2024

NOTE: Jet aircraft descend via Mach number until 280K, if unable, advise ATC.  
NOTE: CITYY Transition, ATC assigned only.  
NOTE: GPS required for CITYY Transition.

CAUTION: Intermittent parajumping activity within 8 NM SSE of FLOWR in the vicinity of Skydive Oregon (LØ5) and Mulino (459) Arpts, at and below 17500.

(CONTINUED ON FOLLOWING PAGE) NOTE: Chart not to scale.

# TMBRS THREE ARRIVAL (RNAV) Arrival Routes

(TMBRS.TMBRS3) 31OCT24

PORTLAND, OREGON  
PORTLAND INTL (PDX)