

LOC/DME I-PDX	APP CRS	Rwy ldg	10R	10L
110.5	103°		11000	8535
Chan 42		TDZE	24	30
		Apt Elev	31	31

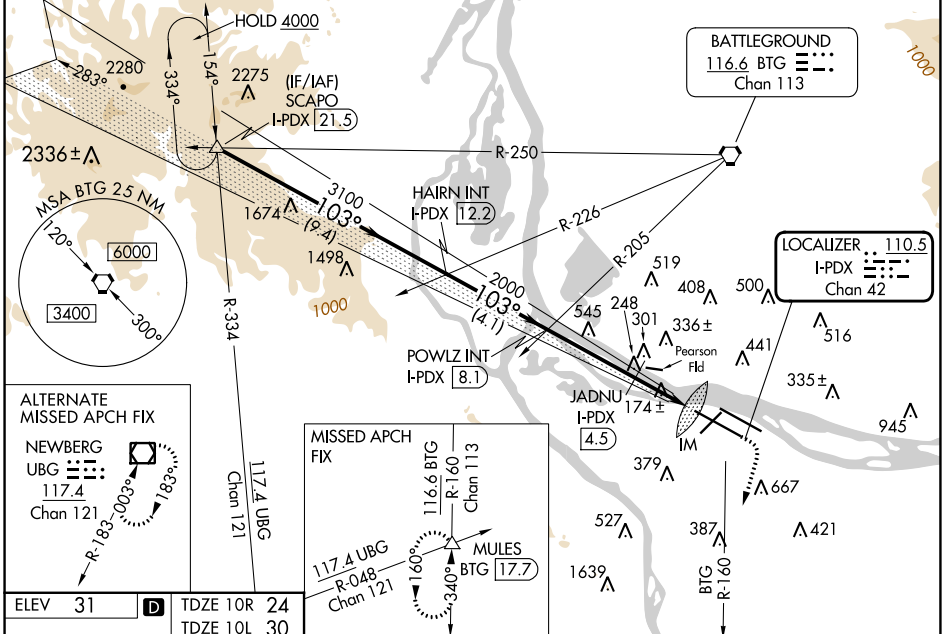
ILS or LOC RWY 10R

PORTLAND INTL (PDX)

⚠ Simultaneous approach authorized. Inop table does not apply to Sidestep LOC 10L. For inop ALS increase S-ILS 10R Cat E visibility to RVR 4000. For inop ALS increase S-LOC 10R Cat C/D/E visibility to 2½ SM. For inop ALS increase JADNU fix minimums S-LOC 10R Cat C/D/E visibility to RVR 6000. Sidestep NA until passing JADNU.

ALSF-2 Rwy 10R	MALSR Rwy 10L	MISSED APPROACH: Climb to 1100 then climbing right turn to 5000 on BTG VORTAC R-160 to MULES/ BTG 17.7 DME and hold, continue climb-in-hold to 5000.
-------------------	------------------	--

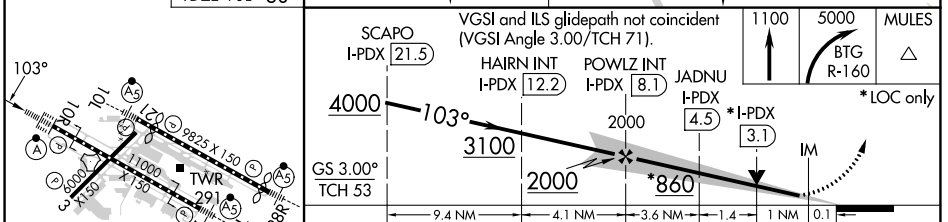
D-ATIS 128.35 269.9	PORTLAND APP CON 124.35 299.2	PORTLAND TOWER Rwy 10L-28R 118.7 257.8 Rwys 3-21, 10R-28L 123.775 251.125	GND CON 121.9 348.6	CLNC DEL 120.125 318.1	CPDLC
---	---	---	-------------------------------	----------------------------------	-------



ALTERNATE MISSED APCH FIX
NEWBERG
UBG 117.4
Chan 121

MISSED APCH FIX
116.6 BTG
R-160
Chan 113
117.4 UBG
R-048
Chan 121

ELEV 31	D	TDZE 10R 24	TDZE 10L 30
---------	----------	-------------	-------------



REIL Rwys 3 and 21	TDZ/CL Rwy 10R	MIRL Rwy 3-21	HIRL Rwys 10L-28R and 10R-28L	FAF to MAP 6 NM	
Knots	60	90	120	150	180
Min:Sec	6:00	4:00	3:00	2:24	2:00
CATEGORY	A	B	C	D	E
S-ILS 10R	224/18 200 (200-½)				
S-LOC 10R	860/24 836 (900-½)	860/40 836 (900-¾)	860-1½ 836 (900-1¾)		
C CIRCLING	860-1¼	829 (900-1¼)	1060-3	1029 (1100-3)	1140-3 1109 (1200-3)
JADNU FIX MINIMUMS					
S-LOC 10R	440/24	416 (500-½)	440/40	416 (500-¾)	
SIDESTEP 10L	800-1 770 (800-1)	800-1¼ 770 (800-1¼)	800-2½	770 (800-2½)	800-2¾ 770 (800-2¾)

NW-1, 31 OCT 2024 to 28 NOV 2024

NW-1, 31 OCT 2024 to 28 NOV 2024