

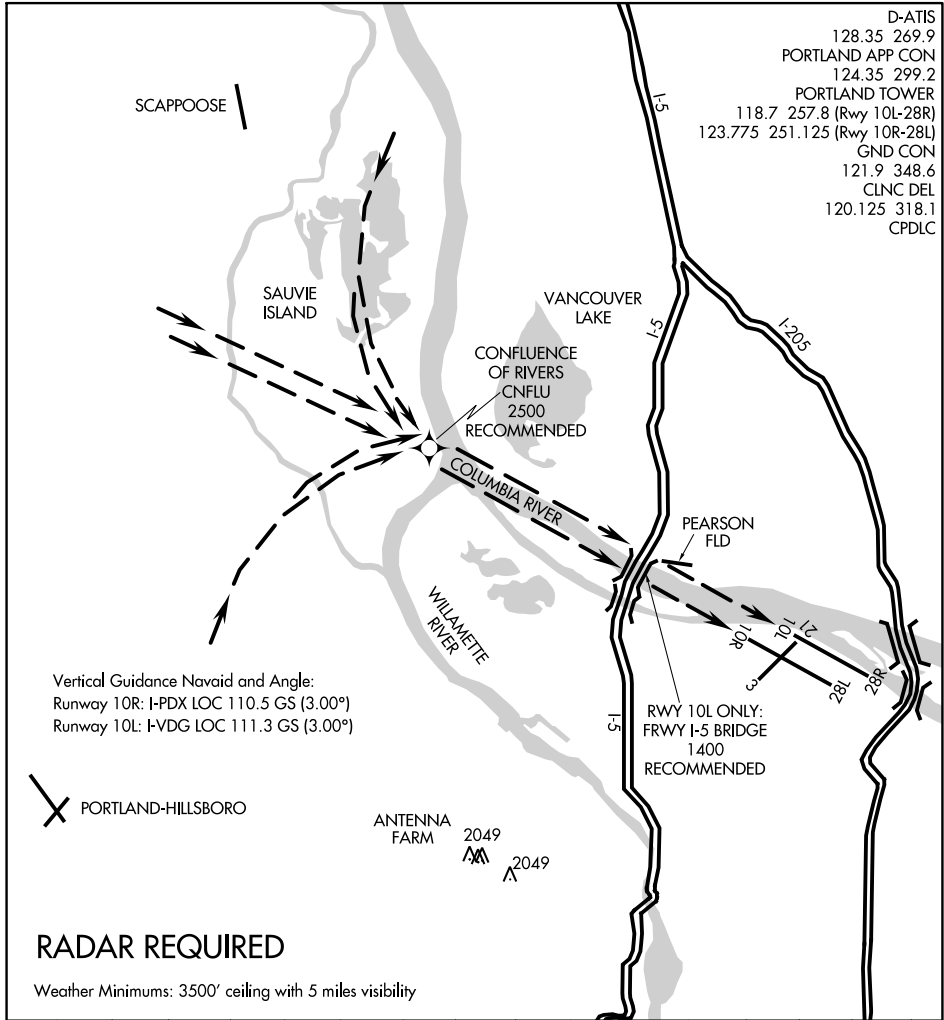
21168

# COLUMBIA VISUAL RWY 10L/R

AL-330 (FAA)

PORTLAND INTL (PDX)  
PORTLAND, OREGON

D-ATIS  
128.35 269.9  
PORTLAND APP CON  
124.35 299.2  
PORTLAND TOWER  
118.7 257.8 (Rwy 10L-28R)  
123.775 251.125 (Rwy 10R-28L)  
GND CON  
121.9 348.6  
CLNC DEL  
120.125 318.1  
CPDLC



NW-1, 31 OCT 2024 to 28 NOV 2024

NW-1, 31 OCT 2024 to 28 NOV 2024

Vertical Guidance Navaid and Angle:  
Runway 10R: I-PDX LOC 110.5 GS (3.00°)  
Runway 10L: I-VDG LOC 111.3 GS (3.00°)

✕ PORTLAND-HILLSBORO

ANTENNA FARM 2049  
2049

## RADAR REQUIRED

Weather Minimums: 3500' ceiling with 5 miles visibility

1	2	3	4	5	6	7	8	9	10	11	12	13	14	15	16
---	---	---	---	---	---	---	---	---	----	----	----	----	----	----	----

COLUMBIA VISUAL RWY 10L/R  
PROCEDURE NOT AUTHORIZED AT NIGHT

# COLUMBIA VISUAL RWY 10L/R

Amdt 3 02MAY13

45°35'N-122°36'W

PORTLAND, OREGON  
PORTLAND INTL (PDX)