

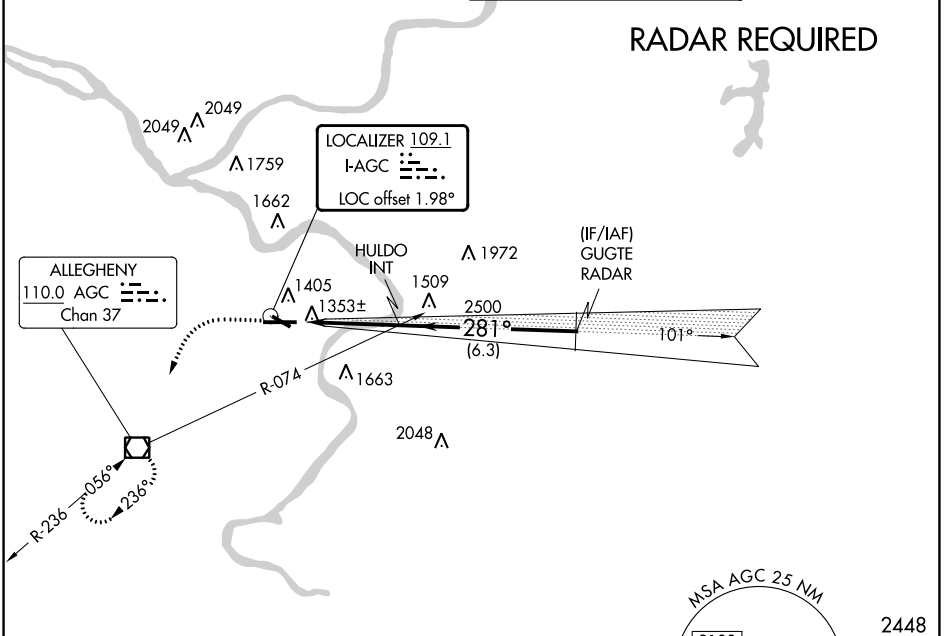
LOC I-AGC 109.1	APP CRS 281°	Rwy ldg TDZE Apt Elev	6501 1251 1252
---------------------------	------------------------	-----------------------------	-------------------------------------------

ILS or LOC RWY 28

ALLEGHENY COUNTY (AGC)

<p>For inoperative MALSR, increase S-LOC Cats C and D visibility to RVR 6000. Circling Rwy 13 NA at night.</p>	<p>MALSR</p>	<p>MISSED APPROACH: Climb to 2000 then climbing left turn to 3000 direct AGC VOR/DME and hold, continue climb-in-hold to 3000.</p>	

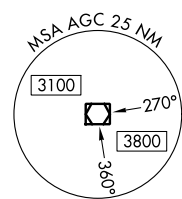
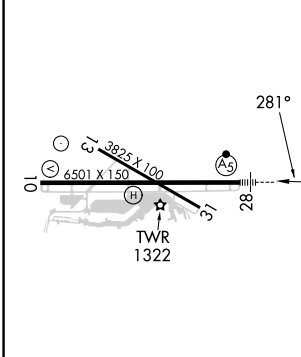
ATIS 120.55	PITTSBURGH APP CON 119.35 285.575	ALLEGHENY TOWER 121.1 239.0	GND CON 121.7
-----------------------	---------------------------------------------	---------------------------------------	-------------------------



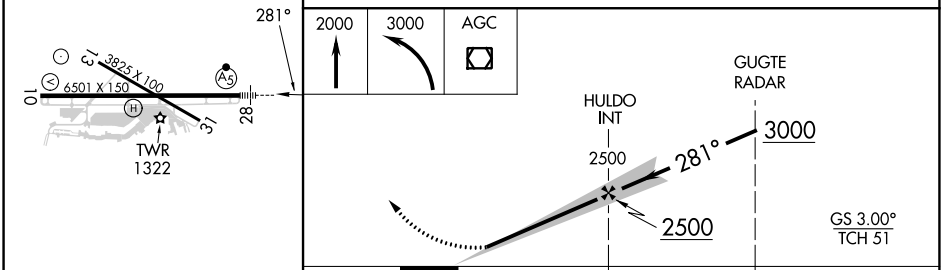
NE-4, 31 OCT 2024 to 28 NOV 2024

NE-4, 31 OCT 2024 to 28 NOV 2024

ELEV 1252	TDZE 1251
-----------	-----------



2448 Δ



REIL Rwy 10, 13, and 31 HIRL Rwy 10-28 and 13-31	CATEGORY				
FAF to MAP 3.8 NM	A	B	C	D	
Knots	60	90	120	150	180
Min:Sec	3:48	2:32	1:54	1:31	1:16
<input checked="" type="checkbox"/> CIRCLING	1720-1	468 (500-1)	1501/24 250 (300-1/2)	1660/40 409 (500-3/4)	
			1980-2 728 (800-2)	1980-2 1/4 728 (800-2 1/4)	