

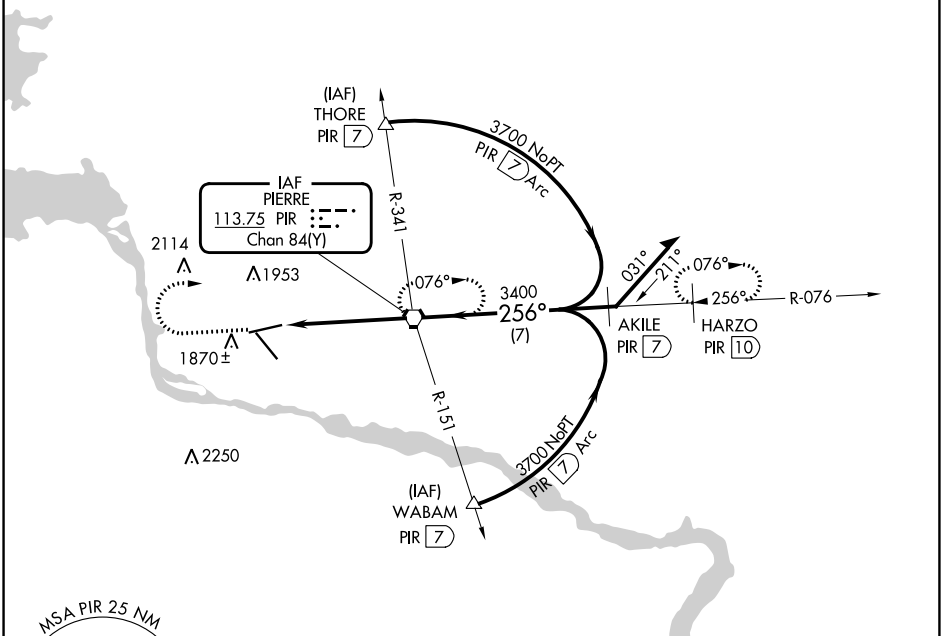
VORTAC PIR 113.75 Chan 84(Y)	APP CRS 256°	Rwy ldg TDZE Apt Elev	6880 1725 1744
---	------------------------	-----------------------------	---

VOR or TACAN RWY 25

PIERRE RGNL (PIR)

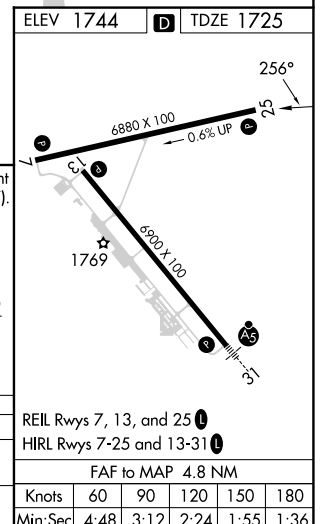
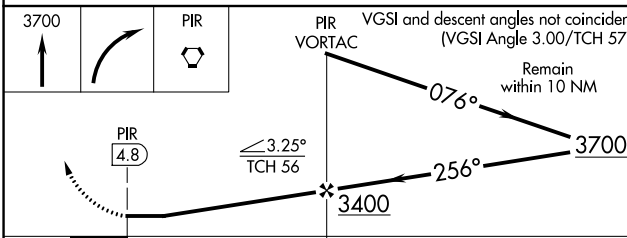
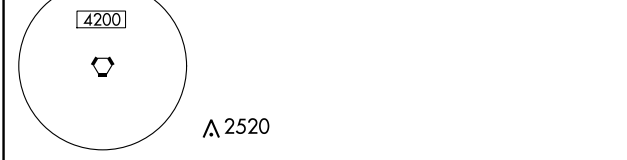
⚠ MISSED APPROACH: Climb to 3700 then right turn direct PIR VORTAC and hold. (TACAN aircraft continue via PIR R-076 to HARZO 10 DME and hold east, right turns, 256° inbound)

ASOS 119.025	MINNEAPOLIS CENTER 125.1 269.1	CTAF 122.7	UNICOM 122.95
------------------------	--	----------------------	-------------------------



NC-1, 31 OCT 2024 to 28 NOV 2024

NC-1, 31 OCT 2024 to 28 NOV 2024



CATEGORY	A	B	C	D
S-25	2120-1	395 (400-1)		2120-1½ 395 (400-1¼)
C CIRCLING	2240-1 496 (500-1)	2300-1 556 (600-1)	2400-1¾ 656 (700-1¾)	2460-2¼ 716 (800-2¼)
				REIL Rwy 7, 13, and 25 HIRL Rwy 7-25 and 13-31
				FAF to MAP 4.8 NM
				Knots: 60 90 120 150 180 Min:Sec: 4:48 3:12 2:24 1:55 1:36

VOR or TACAN RWY 25