

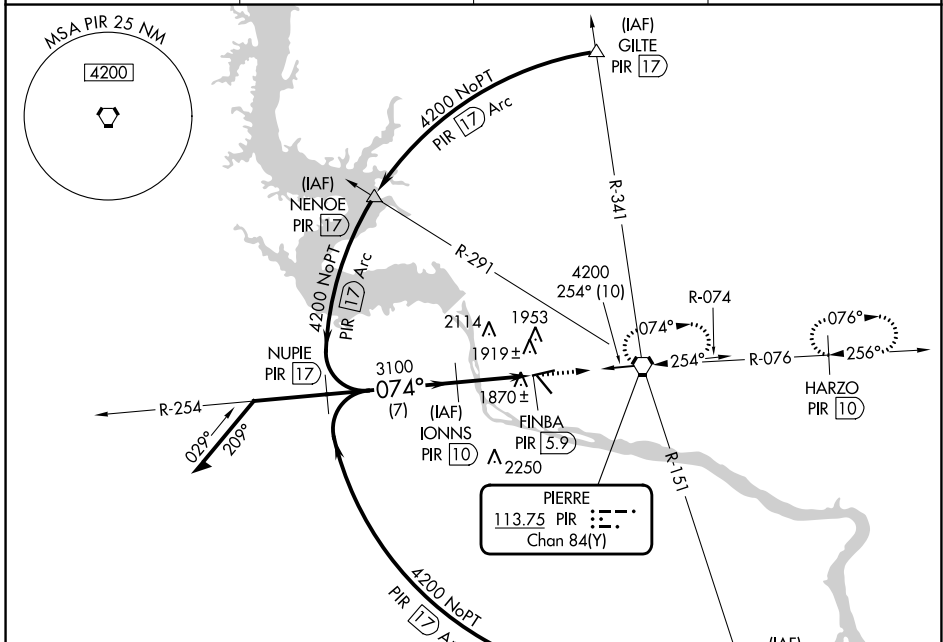
VORTAC PIR 113.75 Chan 84(Y)	APP CRS 074°	Rwy ldg TDZE 1744 Apt Elev 1744	6830
---	------------------------	---	-------------

VOR/DME or TACAN RWY 7

PIERRE RGNL (PIR)

▲ MISSED APPROACH: Climb to 4000 then right turn direct PIR VORTAC and hold. (TACAN aircraft continue via PIR R-076 to HARZO 10 DME and hold East, right turns, 256° inbound).

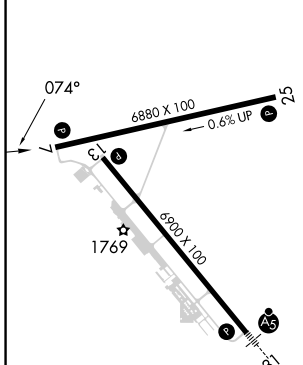
ASOS 119.025	MINNEAPOLIS CENTER 125.1 269.1	CTAF 122.7	UNICOM 122.95
------------------------	--	----------------------	-------------------------



NC-1, 03 OCT 2024 to 31 OCT 2024

NC-1, 03 OCT 2024 to 31 OCT 2024

ELEV 1744	D	TDZE 1744
-----------	----------	-----------



REIL Rwys 7, 13, and 25	HIRL Rwys 7-25 and 13-31
-------------------------	--------------------------

VGSI and descent angles not coincident (VGSI Angle 3.00/TCH 51).

Remain within 10 NM

4200 → 254° → IONNS PIR 10

3100 → 074° → FINBA PIR 5.9

4000 → PIR 7.1

2.98° TCH 56

2.9 NM → 1.2 NM

CATEGORY	A	B	C	D
S-7	2180-1	436 (500-1)	2180-1¼ 436 (500-1¼)	2180-1½ 436 (500-1½)
C CIRCLING	2240-1 496 (500-1)	2300-1 556 (600-1)	2400-1¾ 656 (700-1¾)	2460-2¼ 716 (800-2¼)

VOR/DME or TACAN RWY 7