

WAAS CH 40022 W25A	APP CRS 258°	Rwy Idg 10300 TDZE 1134 Apt Elev 1135
--	------------------------	--

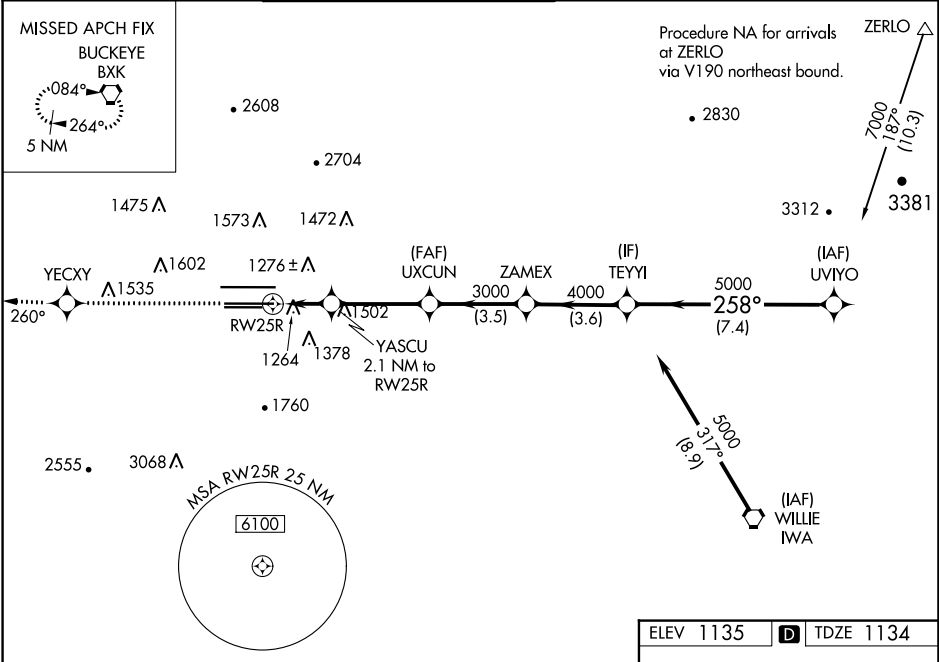
RNAV (GPS) Y RWY 25R

PHOENIX SKY HARBOR INTL (PHX)

⚠ For uncompensated Baro-VNAV systems, LNAV/VNAV NA below -17°C (2°F) or above 46°C (114°F). DME/DME RNP-0.3 NA. Simultaneous approach authorized with ILS or LOC Rwy 26. Use of FD or AP providing RNAV track guidance required during simultaneous operations. LNAV procedure NA during simultaneous operations.

⚠ MISSED APPROACH: Climb to 5000 direct YECXY and via 260° track to BXX VORTAC and hold.

D-ATIS 127.575	PHOENIX APP CON 128.65 353.9	PHOENIX TOWER 118.7 278.8 (Rwy 8-26) 120.9 254.3 (Rwy 7L-25R, 7R-25L)	GND CON 119.75 269.2 (N) 132.55 269.2 (S)	CLNC DEL 118.1 269.2	CPDLC
--------------------------	--	---	---	--------------------------------	-------



SW-4, 03 OCT 2024 to 31 OCT 2024

SW-4, 03 OCT 2024 to 31 OCT 2024

5000	YECXY	fr 260°	BXX	VGSI and RNAV glidepath not coincident (VGSI Angle 3.00/TCH 70).
*LNAV only.	YASCU 2.1 NM to RWY 25R	UXCUN	ZAMEX	TEYYI
1.4 NM to RWY 25R	1860	3000	4000	5000
1.4 NM	0.7 NM	3.5 NM	3.5 NM	3.6 NM
7.4 NM	7000			
Procedure Turn NA				
GP 3.00° TCH 55				
CATEGORY	A	B	C	D
LPV DA	1439-1		305 (400-1)	
LNAV/VNAV DA	1580-1½		446 (500-1½)	
LNAV MDA	1640-1	506 (600-1)	1640-1½	506 (600-1½)
CIRCLING	1740-1	605 (700-1)	2040-2¾ 905 (1000-2¾)	2560-3 1425 (1500-3)

