

QUAKY ONE DEPARTURE (RNAV)

AL-322 (FAA)

PHOENIX SKY HARBOR INTL (PHX)
PHOENIX, ARIZONA

D-ATIS
127.575
CLNC DEL
118.1 269.2
CPDLC
GND CON
119.75 269.2 (NORTH)
132.55 269.2 (SOUTH)
PHOENIX TOWER
118.7 278.8 (Rwy 8-26)
120.9 254.3 (Rwys 7L-25R, 7R-25L)
PHOENIX DEP CON
119.2 281.45

GRAND CANYON 
GCN

**TOP ALTITUDE:
8000**

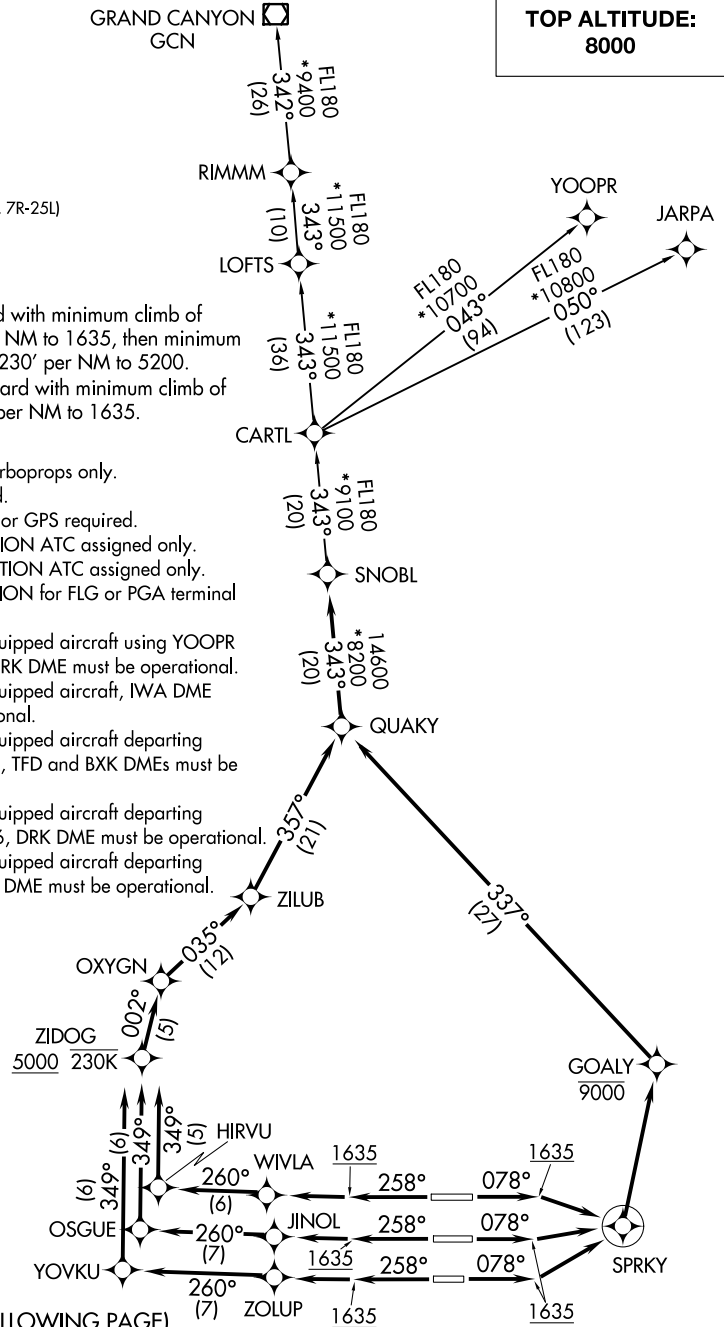
TAKEOFF MINIMUMS

Rwys 7L/R, 8: Standard with minimum climb of 500' per NM to 1635, then minimum climb of 230' per NM to 5200.
Rwys 25L/R, 26: Standard with minimum climb of 500' per NM to 1635.

- NOTE: RNAV 1.
- NOTE: Turbojets and turboprops only.
- NOTE: RADAR required.
- NOTE: DME/DME/IRU or GPS required.
- NOTE: JARPA TRANSITION ATC assigned only.
- NOTE: YOOPR TRANSITION ATC assigned only.
- NOTE: CARTL TRANSITION for FLG or PGA terminal arrivals only.
- NOTE: For non-GPS equipped aircraft using YOOPR TRANSITION, DRK DME must be operational.
- NOTE: For non-GPS equipped aircraft, IWA DME must be operational.
- NOTE: For non-GPS equipped aircraft departing Rwys 25L/R, 26, TFD and BXK DMEs must be operational.
- NOTE: For non-GPS equipped aircraft departing Rwys 8, 25R, 26, DRK DME must be operational.
- NOTE: For non-GPS equipped aircraft departing Rwys 7L/R, PXR DME must be operational.

SW-4, 08 AUG 2024 to 05 SEP 2024

SW-4, 08 AUG 2024 to 05 SEP 2024



NOTE: Chart not to scale.

(NARRATIVE ON FOLLOWING PAGE)

QUAKY ONE DEPARTURE (RNAV)

PHOENIX, ARIZONA
PHOENIX SKY HARBOR INTL (PHX)