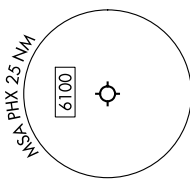


**TOP ALTITUDE:**

**8000**

- PHOENIX DEP CON 126.8 269.6
- D-ATIS 127.575
- CLNC DEL 118.1 269.2
- GND CON 119.75 269.2 (NORTH)
- 132.55 269.2 (SOUTH)
- PHOENIX TOWER 118.7 278.8 (Rwy 8-26)
- 120.9 254.3 (Rwys 7L-25R, 7R-25L)



**DEPARTURE ROUTE DESCRIPTION**

**TAKEOFF RUNWAYS 7L/R, 8:** Climb on heading 078° to 1635, then direct FUTEP, then on track 132° to AZCRD, then on track 199° to USEYE, then on track 264° to OAKLI, then on MASVE at/above 7000 and at/below 220K, then on track 264° to OAKLI, then on track 268° to KEENS, thence. . . .

**TAKEOFF RUNWAYS 25L/R:** Climb on heading 258° to intercept course 240° to WULKO, then on track 268° to KEENS, thence. . . .

**TAKEOFF RUNWAY 26:** Climb on heading 258° to 1635, then left turn direct WULKO, then on track 268° to KEENS, thence. . . .

. . . on track 259° to IZZO, then on (transition). Maintain 8000, expect higher altitude 3 minutes after departure.

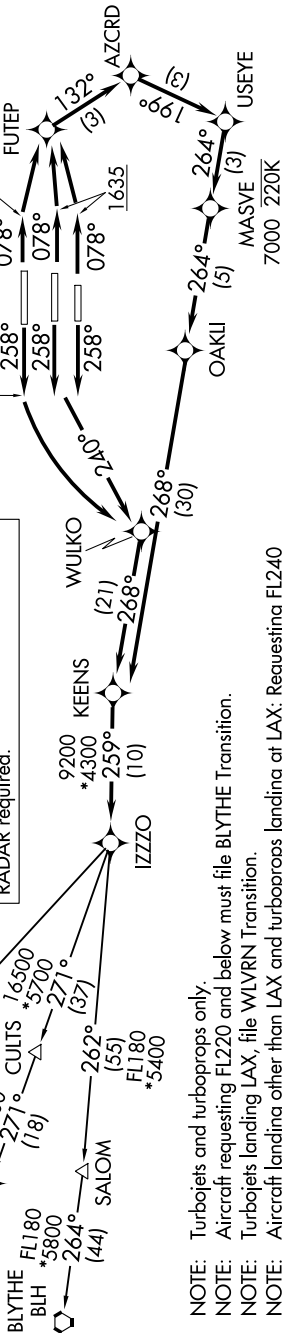
**BLYTHE TRANSITION (KEENS3.BLH)**

**HRRBR TRANSITION (KEENS3.HRRBR)**

**WLVRN TRANSITION (KEENS3.WLVRN)**

**RNAV 1 - DME/DME/IRU or GPS required.**

**RADAR required.**



**TAKEOFF MINIMUMS**

Rwys 7L/R, 8: Standard.  
 Rwys 25L/R, 26: Standard with minimum climb of 500'/NM to 1635.

- NOTE: Turbojets and turboprops only.
- NOTE: Aircraft requesting FL220 and below must file BLYTHE Transition.
- NOTE: Turbojets landing LAX, file WLVRN Transition.
- NOTE: Aircraft landing other than LAX and turboprops landing at LAX: Requesting FL240 and above, file HRRBR Transition.

NOTE: Chart not to scale.