

SW-4, 08 AUG 2024 to 05 SEP 2024

TAKEOFF MINIMUMS

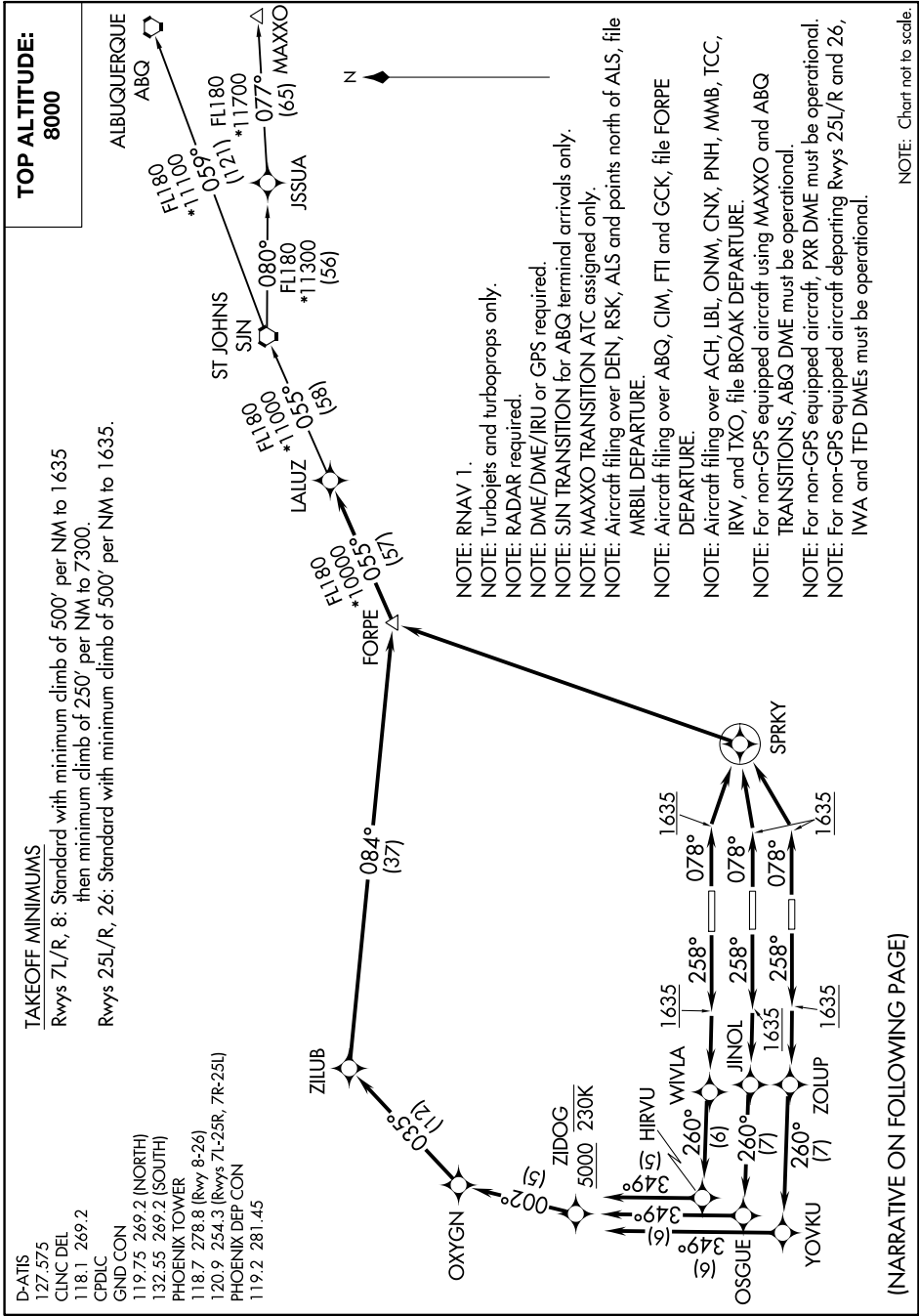
Rwys 7L/R, 8: Standard with minimum climb of 500' per NM to 1635 then minimum climb of 250' per NM to 7300.
Rwys 25L/R, 26: Standard with minimum climb of 500' per NM to 1635.

- D-ATIS 127.575
- CLNC DEL 118.1 269.2
- CPDLC 119.75 269.2 (NORTH)
- 132.55 269.2 (SOUTH)
- PHOENIX TOWER 118.7 278.8 (Rwy 8-26)
- 120.9 254.3 (Rwys 7L-25R, 7R-25L)
- PHOENIX DEP CON 119.2 281.45

FORPE ONE DEPARTURE (RNAV)
(FORPE1.FORPE) 24MAY18

PHOENIX, ARIZONA

PHOENIX SKY HARBOR INTL (PHX)



TOP ALTITUDE:
8000

- NOTE: RNAV 1.
- NOTE: Turbojets and turboprops only.
- NOTE: RADAR required.
- NOTE: DME/DME/IRU or GPS required.
- NOTE: SJN TRANSITION for ABQ terminal arrivals only.
- NOTE: MAXXO TRANSITION ATC assigned only.
- NOTE: Aircraft filing over DEN, RSK, ALS and points north of ALS, file MRBIL DEPARTURE.
- NOTE: Aircraft filing over ABQ, CIM, FTI and GCK, file FORPE DEPARTURE.
- NOTE: Aircraft filing over ACH, LBL, ONM, CNX, PNH, MMB, TCC, IRW, and TXO, file BROAK DEPARTURE.
- NOTE: For non-GPS equipped aircraft using MAXXO and ABQ TRANSITIONS, ABQ DME must be operational.
- NOTE: For non-GPS equipped aircraft, PXR DME must be operational.
- NOTE: For non-GPS equipped aircraft departing Rwys 25L/R and 26, IWA and TFD DMEs must be operational.

(NARRATIVE ON FOLLOWING PAGE)

NOTE: Chart not to scale.

SW-4, 08 AUG 2024 to 05 SEP 2024