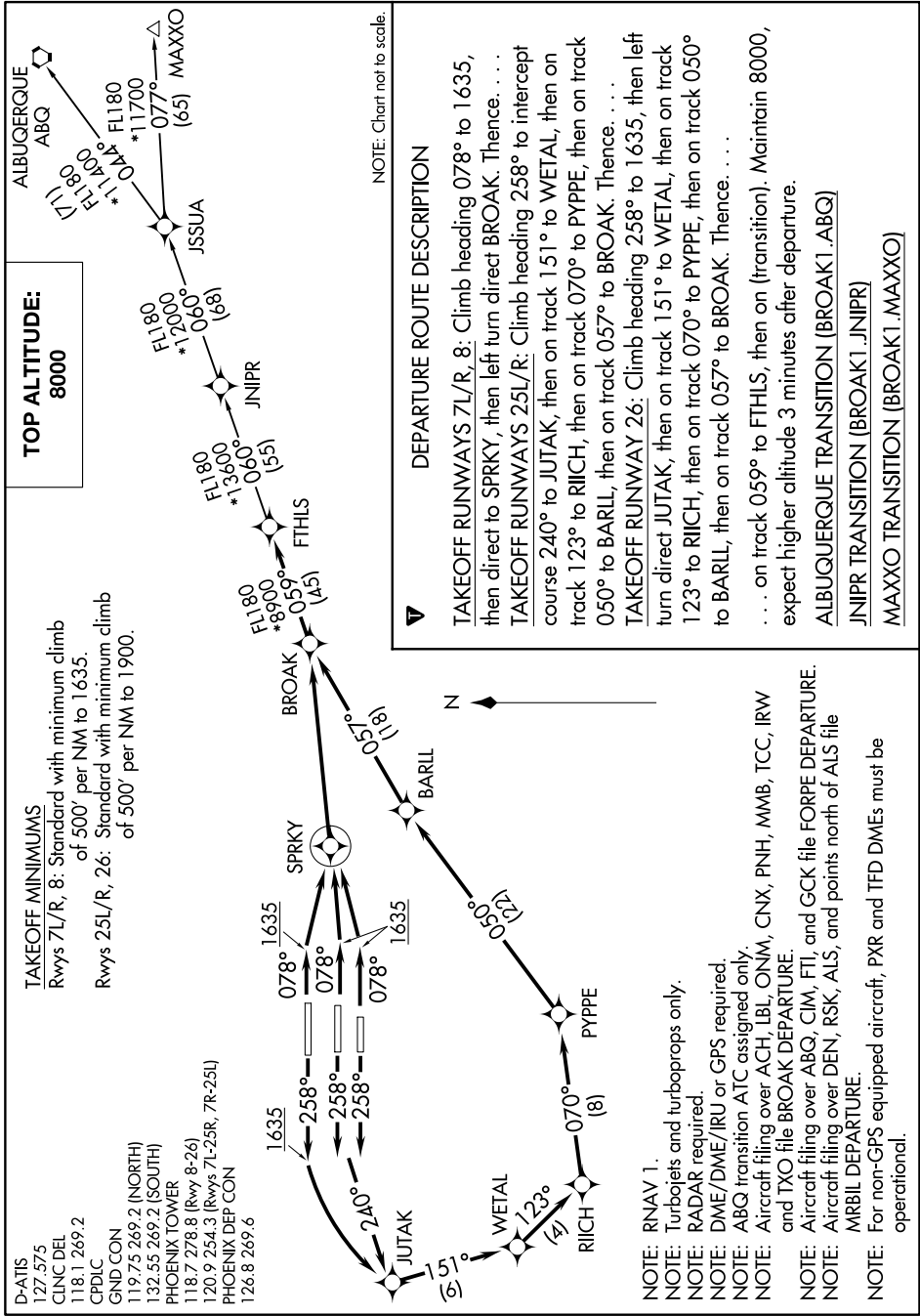


SW-4, 08 AUG 2024 to 05 SEP 2024



TAKEOFF MINIMUMS
 Rwy's 7L/R, 8: Standard with minimum climb of 500' per NM to 1635.
 Rwy's 25L/R, 26: Standard with minimum climb of 500' per NM to 1900.

TOP ALTITUDE:
 8000

DEPARTURE ROUTE DESCRIPTION
 TAKEOFF RUNWAYS 7L/R, 8: Climb heading 078° to 1635, then direct to SPRKY, then left turn direct BROAK. Thence. . . .
 TAKEOFF RUNWAYS 25L/R: Climb heading 258° to intercept course 240° to JUTAK, then on track 151° to WETAL, then on track 123° to RIICH, then on track 070° to PYPPE, then on track 050° to BARLL, then on track 057° to BROAK. Thence. . . .
 TAKEOFF RUNWAY 26: Climb heading 258° to 1635, then left turn direct JUTAK, then on track 151° to WETAL, then on track 123° to RIICH, then on track 070° to PYPPE, then on track 050° to BARLL, then on track 057° to BROAK. Thence. . . .
 . . . on track 059° to FTHLS, then on (transition). Maintain 8000, expect higher altitude 3 minutes after departure.

ALBUQUERQUE TRANSITION (BROAK1.ABQ)
JNIPR TRANSITION (BROAK1.JNIPR)
MAXXO TRANSITION (BROAK1.MAXXO)

NOTE: For non-GPS equipped aircraft, PXR and TFD DMEs must be operational.

NOTE: RNAV 1.
 NOTE: Turbojets and turboprops only.
 NOTE: RADAR required.
 NOTE: DME/DME/IRU or GPS required.
 NOTE: ABQ transition ATC assigned only.
 NOTE: Aircraft filing over ACH, LBL, ONM, CNX, PNH, MMB, TCC, IRW and TXO file BROAK DEPARTURE.
 NOTE: Aircraft filing over ABQ, CIM, FTI, and GCK file FORPE DEPARTURE.
 NOTE: Aircraft filing over DEN, RSK, ALS, and points north of ALS file MRBIL DEPARTURE.
 NOTE: For non-GPS equipped aircraft, PXR and TFD DMEs must be operational.

SW-4, 08 AUG 2024 to 05 SEP 2024