

ARLIN FOUR ARRIVAL

AL-322 (FAA)

PHOENIX, ARIZONA

SW-4, 08 AUG 2024 to 05 SEP 2024

ARRIVAL ROUTE DESCRIPTION

BLYTE TRANSITION (BLH.ARLIN4): From over BLH VORTAC on BLH R-089 and IWA R-256 to ARLIN INT. Thence. . . .

MOHAK TRANSITION (MOHAK.ARLIN4): From over MOHAK INT on GBN R-247 and BXK R-215 to HYDRR INT, then on IWA R-256 to ARLIN INT. Thence. . . .

PHOENIX SKY HARBOR INTL: Rwy 7L/R or 8: From over ARLIN, Expect vectors to final approach course; Rwy 25L/R or 26: From over ARLIN, on IWA R-256 to TUKEE. Expect vectors to final approach course prior to TUKEE.

SATELLITE AIRPORTS: Expect vectors after passing SCOPE or JUDTH.

LOST COMMUNICATIONS: After ARLIN, on IWA R-256 and PXR R-143 to PXR VORTAC.

NOTE: BLYTHE Transition for turbojet aircraft FL240 and above.
Turboprop aircraft plan BLYTHE ARRIVAL at or below FL230.

NOTE: MOHAK Transition for turbojet and turboprop aircraft.

NOTE: Turboprops landing KPHX expect vectors after passing SCOPE or JUDTH.

SCOPE

VERTICAL NAVIGATION PLANNING INFORMATION

FL180 089° (35)

FLYTE 117.4 BLH
Chan 121

10000 089° (48)
Expect FL250

10000 076° (75) (4)

10000 076° (111) (8)

10000 256° (60) (8)

10000 215° (71) (11)

10000 256° (117) (17)

10000 256° (171) (17)

10000 256° (117) (17)

10000 256° (117) (17)

10000 256° (117) (17)

10000 256° (117) (17)



PHOENIX APP CON
124.1 256.9

PHOENIX TOWER
118.7 278.8 (Rwy 8-26)

120.9 254.3 (Rwy 7L-23R, 7R-25L)

PHOENIX GND CON
119.75 269.2

CHD ATIS
128.325

FFZ ATIS
118.25

DVT ATIS
126.5

IWA ATIS ★
133.5 270.275

PHX D-ATIS
127.575

SDL ATIS ★
118.6

PHOENIX-DEER VALLEY

SCOTTSDALE

PHOENIX
115.6 PXR
Chan 103

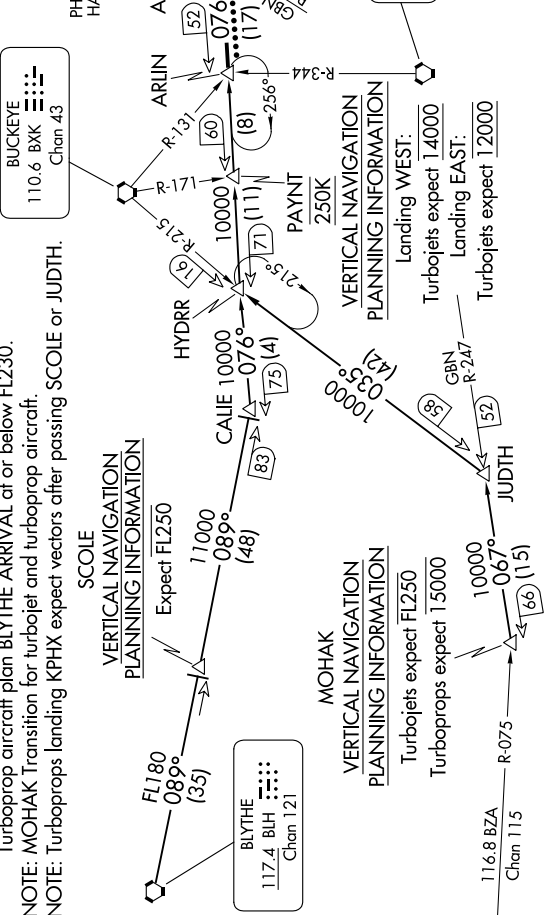
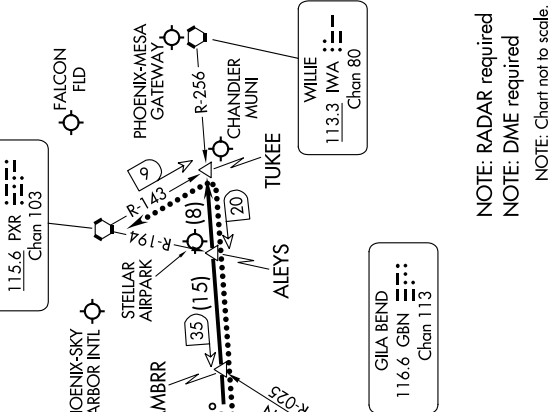
FALCON FLD

PHOENIX-MESA GATEWAY

CHANDLER MUNI

TUKEE

WILIE
113.3 IWA :-
Chan 80



NOTE: RADAR required

NOTE: DME required

NOTE: Chart not to scale.

ARLIN FOUR ARRIVAL

PHOENIX, ARIZONA

SW-4, 08 AUG 2024 to 05 SEP 2024