

# LENNI FOUR ARRIVAL

AL-321 (FAA)

LUKE AFB (LUF)  
GLENDALE, ARIZONA

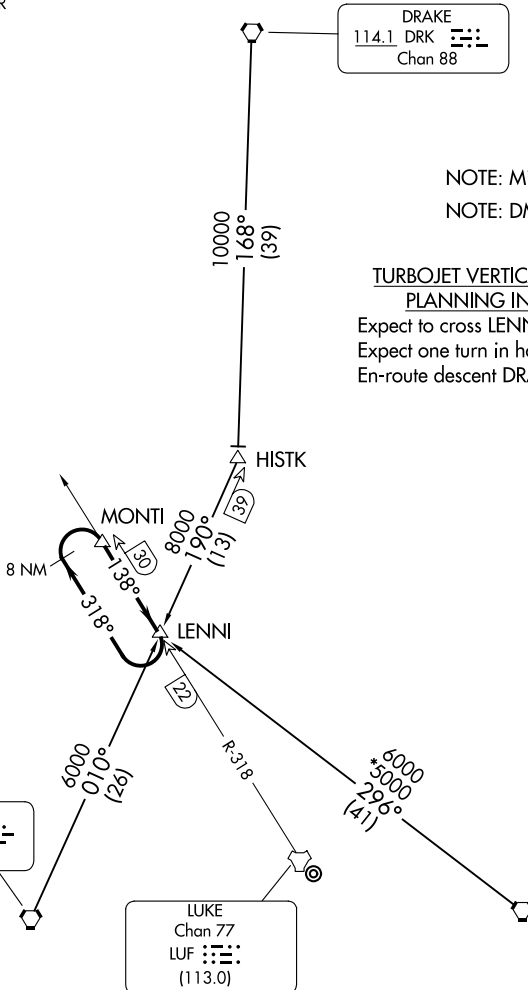
ALBUQUERQUE CENTER  
128.45 289.9  
LUKE RAPCON ★  
118.15 363.125  
LUKE TOWER ★  
119.1 379.9  
ATIS ★  
134.925 269.85  
METRO  
267.4

DRAKE  
114.1 DRK  
Chan 88

NOTE: Military only.  
NOTE: DME required.

### TURBOJET VERTICAL NAVIGATION PLANNING INFORMATION

Expect to cross LENNI at FL220.  
Expect one turn in holding at LENNI.  
En-route descent DRAKE Transition only.



NOTE: Chart not to scale.

### ARRIVAL ROUTE DESCRIPTION

**BUCKEYE TRANSITION (BXK.LENNI4):** From over BXK VORTAC on BXK R-010 to LENNI. Thence . . . .

**DRAKE TRANSITION (DRK.LENNI4):** From over DRK VORTAC on DRK R-168 and BXK R-010 to LENNI. Thence . . . .

**PHOENIX TRANSITION (PXR.LENNI4):** From over PXR VORTAC on PXR R-296 to LENNI. Thence . . . .

. . . . expect one turn in holding at LENNI followed by HI-TACAN, HI-ILS or LOC/DME to Luke AFB.

# LENNI FOUR ARRIVAL

(LENNI.LENNI4) 14JUL22

GLENDALE, ARIZONA  
LUKE AFB (LUF)

SW-4, 31 OCT 2024 to 28 NOV 2024

SW-4, 31 OCT 2024 to 28 NOV 2024