

HI-ILS or LOC/DME RWY 21L

LOC I-EMJ 110.9	APCH CRS 213°	Rwy Ldg 9912
		TDZE 1084
		Arprt Elev 1084

[USAF]

LUKE AFB (KLUF)

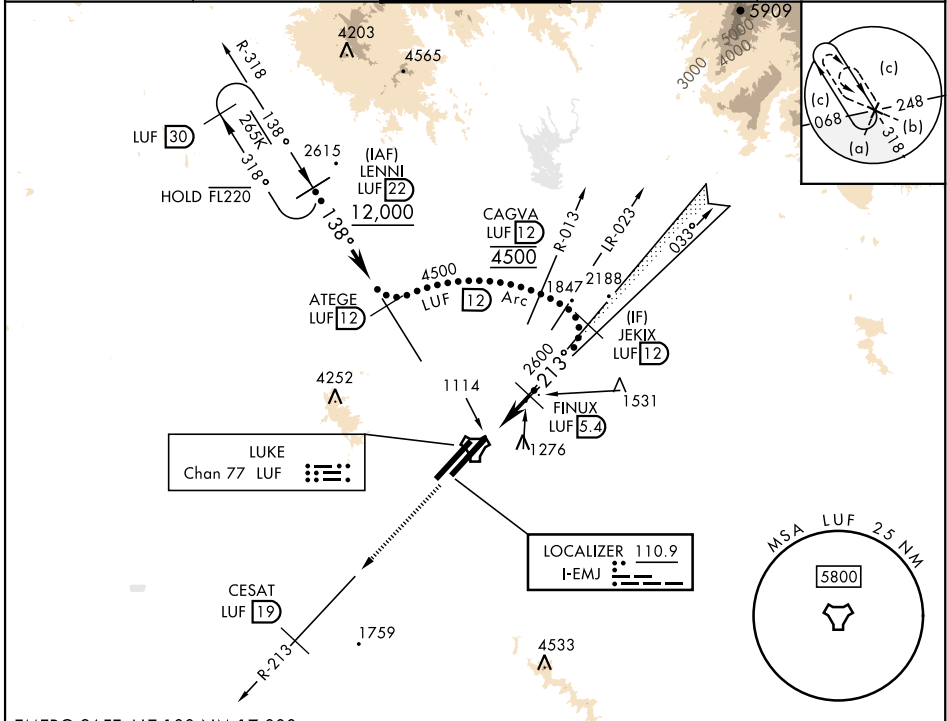
RADAR required

- * When ALS inop, increase vis to ¾ mile.
- ** When ALS inop, increase vis to 1½ miles.

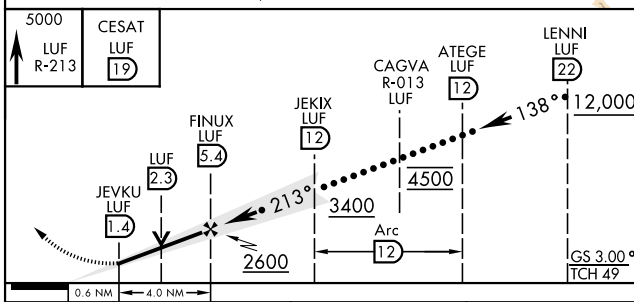


MISSED APPROACH: Climbing to 5000, intercept LUF TACAN R-213 to 19 DME (CESAT). Contact LUKE APP CON.

ATIS ★ 134.925 269.85	APP CON ★ 118.15 363.125	TOWER ★ 119.1 379.9	GND CON ★ 133.175 335.8	CLNC DEL ★ 126.25 273.475
---------------------------------	------------------------------------	-------------------------------	-----------------------------------	-------------------------------------

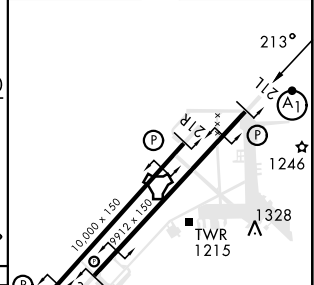


EMERG SAFE ALT 100 NM 17,000



ELEV	1084	TDZE	1084
------	------	------	------

CATEGORY	C	D	E
S-ILS 21L *	1284-½	200 (200-½)	
S-LOC/ DME 21L **	1600-1	516 (600-1)	
SIDESTEP 21R	1600-2	516 (600-2)	
CIRCLING	NOT AUTHORIZED		



HIRL all rwys

HI-ILS or LOC/DME RWY 21L

SW-4, 31 OCT 2024 to 28 NOV 2024

SW-4, 31 OCT 2024 to 28 NOV 2024