

APP CRS	Rwy Idg	<b>12000</b>
<b>087°</b>	TDZE	<b>21</b>
	Apt Elev	<b>36</b>

# RNAV (RNP) Z RWY 9R

PHILADELPHIA INTL (PHL)

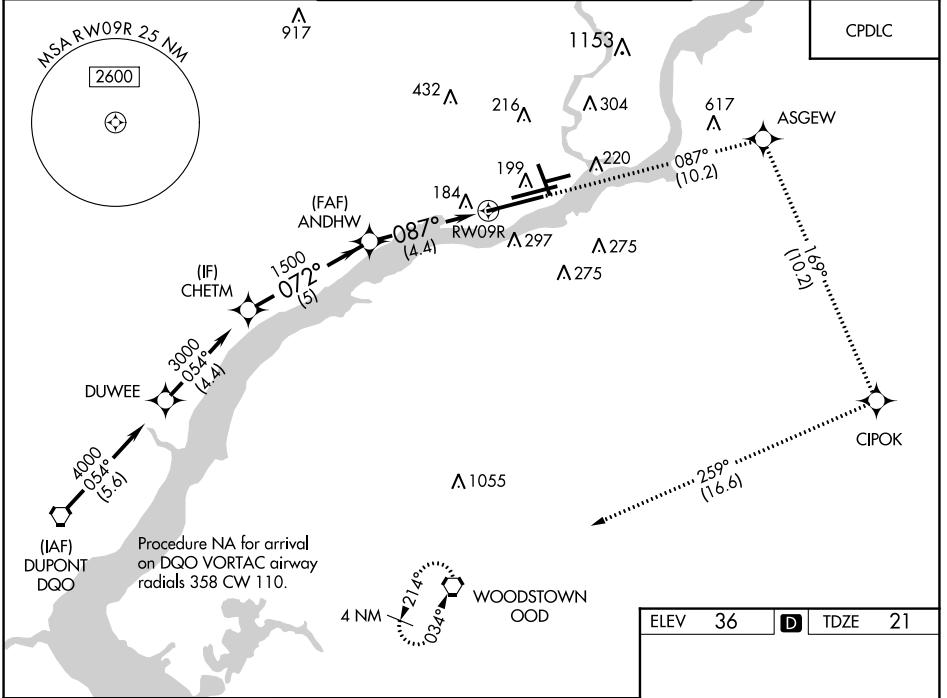
RNP AR APCH - GPS.

▼ For uncompensated Baro-VNAV systems, procedure NA below -12°C or above 54°C. For inop ALS, increase RNP 0.16 all Cats visibility to RVR 4500 and RNP 0.30 all Cats visibility to 1½ SM.

ALSF-2

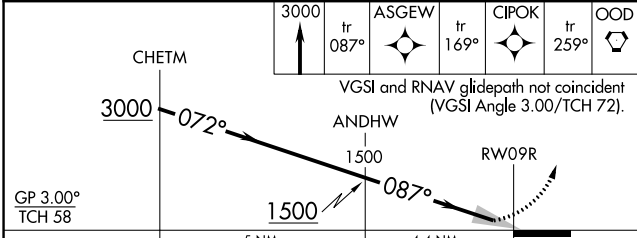
MISSED APPROACH: Climb to 3000 on track 087° to ASGEW and on track 169° to CIPOK, and on track 259° to OOD VORTAC and hold.

D-ATIS	PHILADELPHIA APP CON	PHILADELPHIA TOWER	GND CON	CLNC DEL
ARR <b>133.4</b>	<b>124.35 319.15</b>	<b>118.5 327.05</b> (Rwys 9L/27R, 8/26 and 17/35)	<b>121.9 348.6</b>	<b>118.85 348.6</b>
DEP <b>135.925</b>		<b>135.1 327.05</b> (Rwy 9R/27L)		



NE-4, 31 OCT 2024 to 28 NOV 2024

NE-4, 31 OCT 2024 to 28 NOV 2024



CATEGORY	A	B	C	D
RNP 0.16 DA		424/40	403 (400-¾)	
RNP 0.30 DA		461/50	440 (500-1)	

ELEV	36	D	TDZE	21
------	----	---	------	----

Detailed view of RWY 9R and taxiway layout, showing:
 

- AS** (ALS) and **AS** (ALS) markers.
- TWR 147**.
- Dimensions**: 2500 X 150, 2000 X 200, 1000 X 150.
- Gradients**: 0.5% UP.
- Angles**: 087°, 169°, 259°.

TDZ/CL Rwy 9R  
HIRL all Rwys  
REIL Rwys 9L and 35

## AUTHORIZATION REQUIRED