

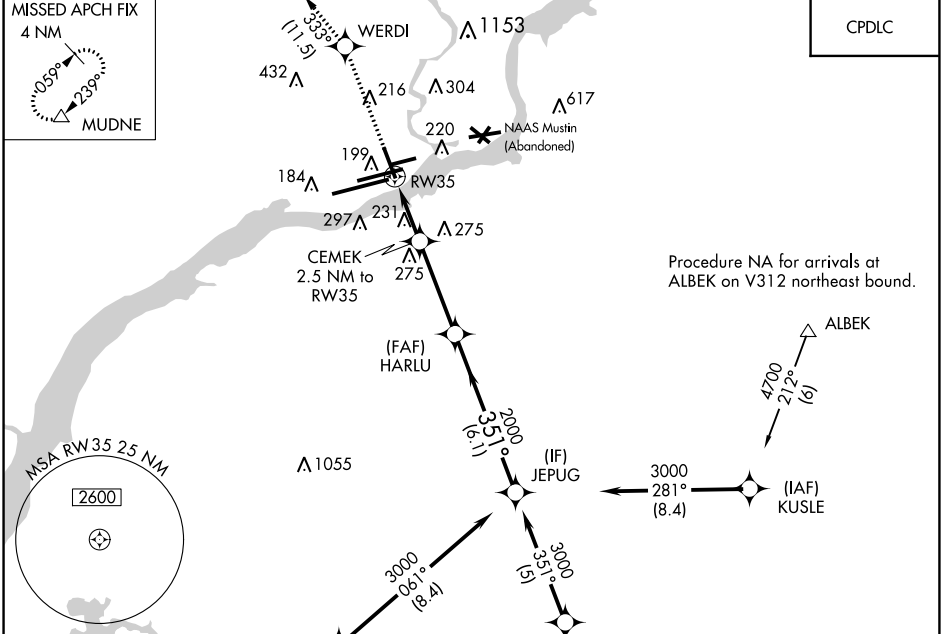
WAAS CH <b>99721</b> <b>W35A</b>	APP CRS <b>351°</b>	Rwy Idg TDZE <b>13</b> Apt Elev <b>36</b>	<b>6500</b>
--	------------------------	---	-------------

# RNAV (GPS) RWY 35

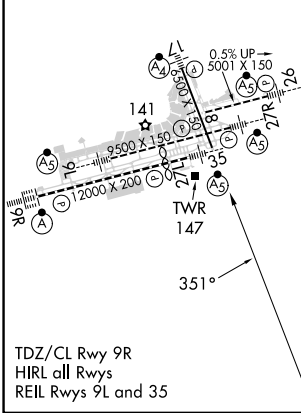
PHILADELPHIA INTL (PHL)

RNP APCH. ▼ Rwy 35 helicopter visibility reduction below RVR 4000 NA.		MISSED APPROACH: Climb to 3000 direct WERDI and on track 333° to MUDNE and hold.	
--	--	--	--

D-ATIS ARR <b>133.4</b> DEP <b>135.925</b>	PHILADELPHIA APP CON <b>124.35 319.15</b>	PHILADELPHIA TOWER <b>118.5 327.05</b> (Rwys 9L/27R, 8/26 and 17/35) <b>135.1 327.05</b> (Rwy 9R/27L)	GND CON <b>121.9 348.6</b>	CLNC DEL <b>118.85 348.6</b>
--	--	---	-------------------------------	---------------------------------



ELEV 36	<b>D</b>	TDZE 13
---------	----------	---------



3000	WERDI	tr 333°	MUDNE	JEPUG
			CEMEK 2.5 NM to RW35	
			1.3 NM to RW35	
			3.6 NM	
			6.1 NM	
CATEGORY	A	B	C	D
LP MDA	500/55	487 (500-1)	500-1 3/8	487 (500-1 3/8)
LNAV MDA	500/55	487 (500-1)	500-1 3/8	487 (500-1 3/8)
<b>C</b> CIRCLING	540-1	600-1	620-1 1/2	720-2 1/4
	504 (600-1)	564 (600-1)	584 (600-1 1/2)	684 (700-2 1/4)

NE-4, 11 JUL 2024 to 08 AUG 2024

NE-4, 11 JUL 2024 to 08 AUG 2024