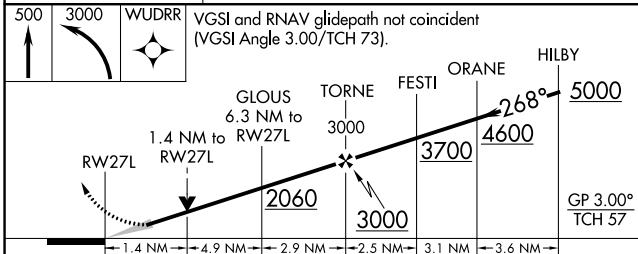
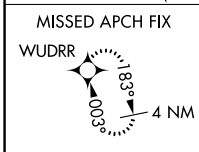
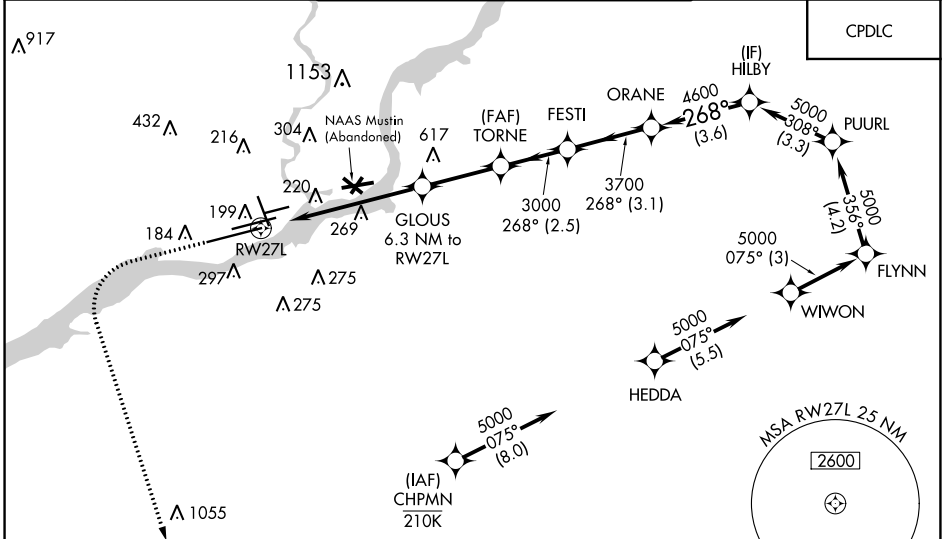


WAAS CH 97322	APP CRS 268°	Rwy Idg TDZE Apt Elev	9912 10 36
-------------------------	------------------------	-----------------------------	---------------------------------------

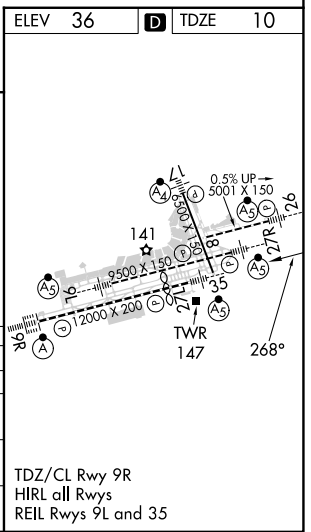
RNAV (GPS) RWY 27L

PHILADELPHIA INTL (PHL)

RNP APCH - GPS.		MALSR 	MISSED APPROACH: Climb to 500 then climbing left turn to 3000 direct WUDRR and hold.	
<p>▽ For uncompensated Baro-VNAV systems, LNAV/VNAV NA below -11°C or above 54°C. For inop ALS, increase LNAV/VNAV all Cats visibility to RVR 6000. * RVR 1800 authorized with use of FD or AP or HUD to DA.</p>				
D-ATIS ARR 133.4 DEP 135.925	PHILADELPHIA APP CON 124.35 319.15	PHILADELPHIA TOWER (Rwys 9L/27R, 8/26 and 17/35) 118.5 327.05 135.1 327.05 (Rwy 9R/27L)	GND CON 121.9 348.6	CLNC DEL 118.85 348.6



ELEV 36	TDZE 10
<p>500 3000 WUDRR</p> <p>VGSI and RNAV glidepath not coincident (VGSI Angle 3.00/TCH 73).</p>	
<p>ORANE HILBY</p> <p>268° 5000</p> <p>4600 3700</p> <p>GP 3.00° TCH 57</p>	
<p>1.4 NM 4.9 NM 2.9 NM 2.5 NM 3.1 NM 3.6 NM</p>	
<p>RWY 27L RWY 27L</p> <p>1.4 NM to RWY 27L 6.3 NM to RWY 27L</p>	
<p>CATEGORY A B C D</p>	
<p>LPV DA* 210/24 200 (200-1/2)</p>	
<p>LNAV/DA VNAV 422/40 412 (400-3/4)</p>	
<p>LNAV MDA 540/24 530 (600-1/2) 540/55 530 (600-1)</p>	
<p>CIRCLING 540-1 600-1 620-1 720-2 504 (600-1) 564 (600-1) 584 (600-1/2) 684 (700-2/4)</p>	



NE-4, 11 JUL 2024 to 08 AUG 2024

NE-4, 11 JUL 2024 to 08 AUG 2024