

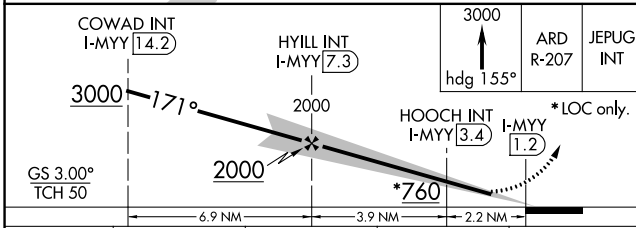
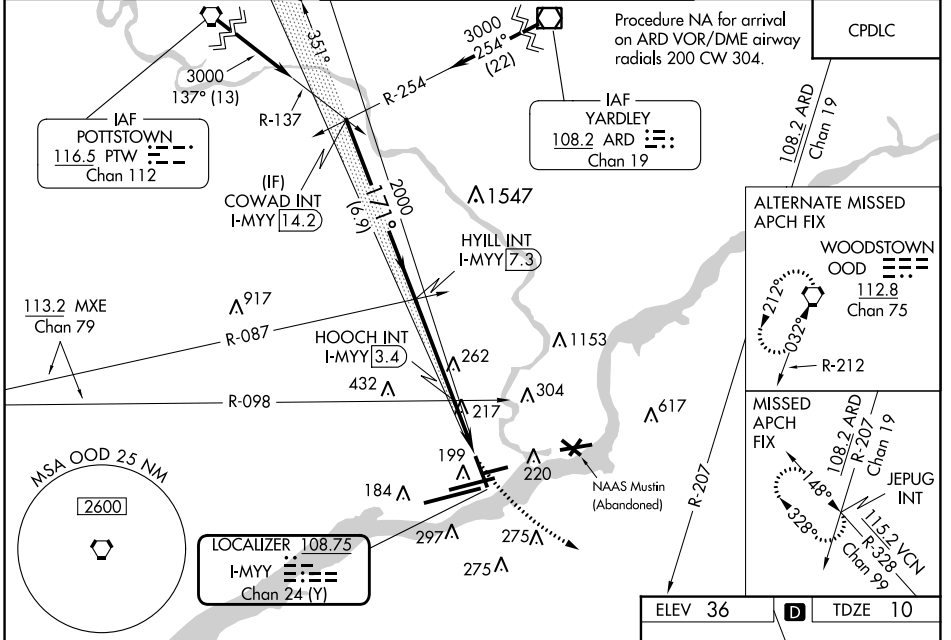
LOC/DME I-MYY 108.75 Chan 24 (Y)	APP CRS 171°	Rwy Idg 6500 TDZE 10 Apt Elev 36
---	------------------------	---

ILS Z or LOC RWY 17

PHILADELPHIA INTL (PHL)

<p>⚠ Inop table does not apply to S-ILS 17 all Cats and S-LOC 17 Cat A. For inop ALS, increase S-LOC 17 Cat C visibility to 2 SM. HOOCH fix minimums: inop table does not apply to Cats A/B. Rwy 17 helicopter visibility reduction below RVR 5000 NA.</p>	MALSF	MISSED APPROACH: Climb to 3000 on heading 155° and ARD VOR/DME R-207 to JEPUG INT and hold.

D-ATIS ARR 133.4 DEP 135.925	PHILADELPHIA APP CON 124.35 319.15	PHILADELPHIA TOWER 118.5 327.05 (Rwys 9L/27R, 8/26 and 17/35) 135.1 327.05 (Rwy 9R/27L)	GND CON 121.9 348.6	CLNC DEL 118.85 348.6
--	--	---	-------------------------------	---------------------------------



ELEV 36	TDZE 10
---------	---------

171°
0.5% UP
5001 X 150
141
147
TWR
12000 X 200

CATEGORY	A	B	C	D
S-ILS 17	260/50 250 (300-1)			
S-LOC 17	760/50 750 (800-1)	760/55 750 (800-1)	760-1 ⁷ / ₈ 750 (800-1 ⁷ / ₈)	760-2 ¹ / ₄ 750 (800-2 ¹ / ₄)
CIRCLING	760-1 724 (800-1)	760-1 ¹ / ₄ 724 (800-1 ¹ / ₄)	760-2 724 (800-2)	760-2 ¹ / ₄ 724 (800-2 ¹ / ₄)
HOOCH FIX MINIMUMS				
S-LOC 17	480/50	470 (500-1)	480/60	470 (500-1 ¹ / ₄)
CIRCLING	540-1 504 (600-1)	600-1 564 (600-1)	620-1 ¹ / ₂ 584 (600-1 ¹ / ₂)	720-2 ¹ / ₄ 684 (700-2 ¹ / ₄)

TDZ/CL Rwy 9R
HIRL all Rwys
REIL Rwys 9L and 35

FAF to MAP 6.1 NM

Knots	60	90	120	150	180
Min:Sec	6:06	4:04	3:03	2:26	2:02

NE-4, 11 JUL 2024 to 08 AUG 2024

NE-4, 11 JUL 2024 to 08 AUG 2024