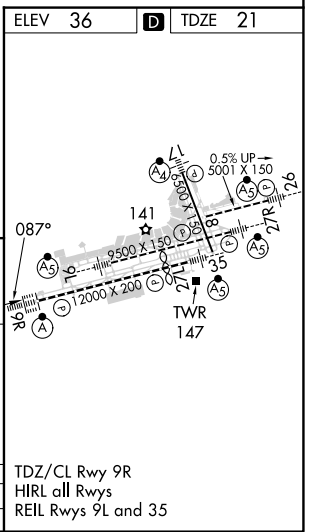
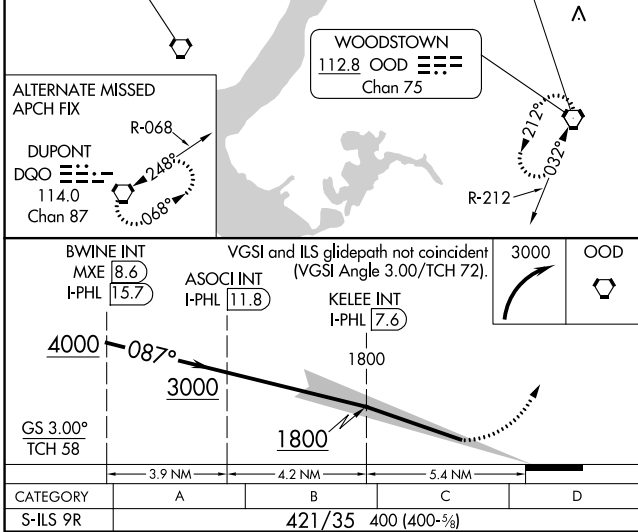
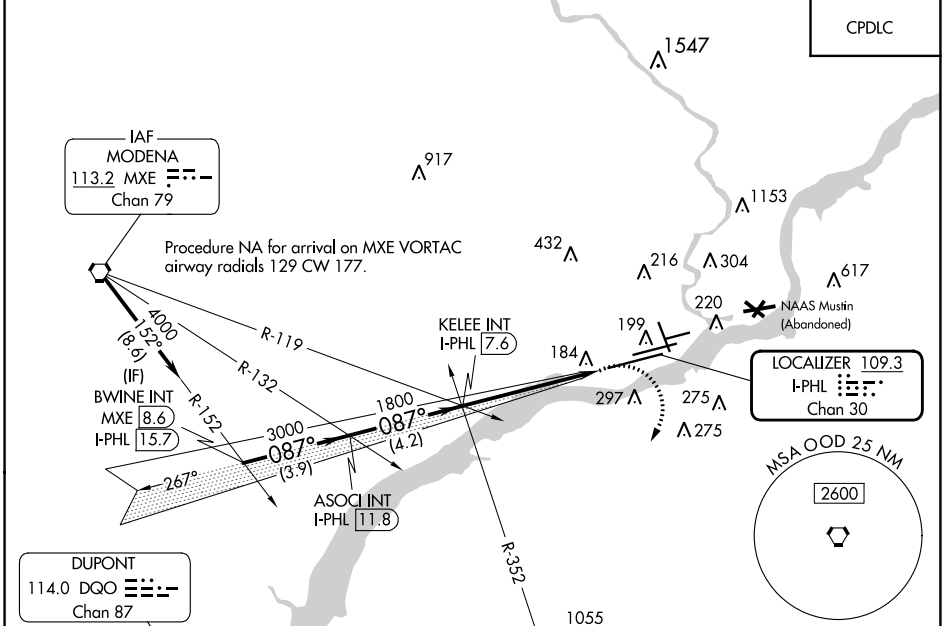


LOC/DME I-PHL	APP CRS	Rwy Idg	12000
<b>109.3</b>	<b>087°</b>	TDZE	21
Chan 30		Apt Elev	36

# ILS V RWY 9R (CONVERGING)

PHILADELPHIA INTL (PHL)

RADAR required.		ALS-F-2	MISSED APPROACH: Climbing right turn to 3000 direct OOD VORTAC and hold.	
<p>Simultaneous approach authorized. For inop ALS, increase S-ILS 9R all Cats visibility to RVR 6000.</p>				
D-ATIS	PHILADELPHIA APP CON	PHILADELPHIA TOWER		GND CON
ARR <b>133.4</b>	<b>124.35 319.15</b>	<b>118.5 327.05</b> (Rwys 9L/27R, 8/26 and 17/35)		<b>121.9 348.6</b>
DEP <b>135.925</b>		<b>135.1 327.05</b> (Rwy 9R/27L)		<b>118.85 348.6</b>



PHILADELPHIA, PENNSYLVANIA	39°52'N-75°14'W	PHILADELPHIA INTL (PHL)
Amdt 6 19JUL18		<b>ILS V RWY 9R (CONVERGING)</b>

NE-4, 31 OCT 2024 to 28 NOV 2024

NE-4, 31 OCT 2024 to 28 NOV 2024