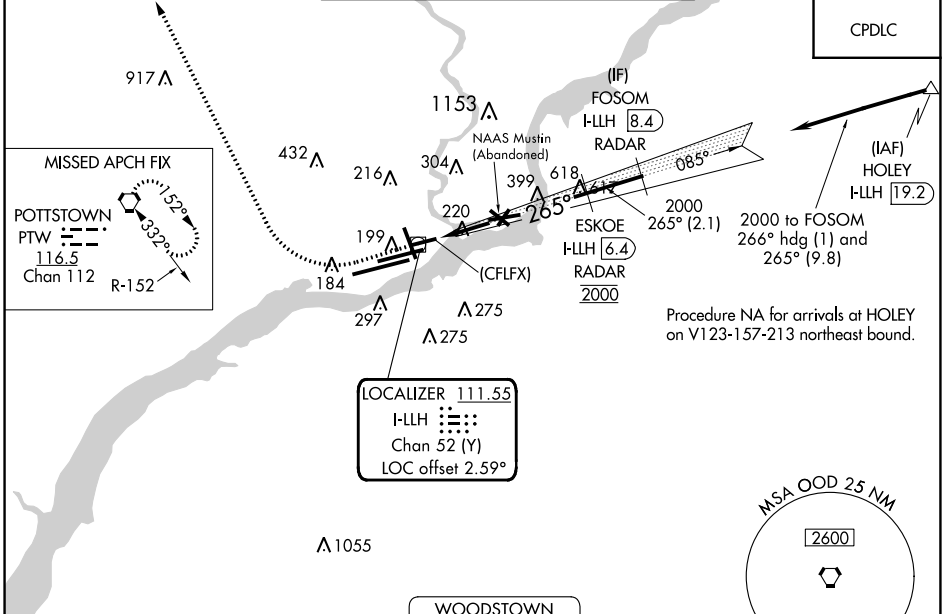


LOC/DME I-LLH 111.55 Chan 52 (Y)	APP CRS 265°	Rwy Idg TDZE 36 Apt Elev 36	5001
--	------------------------	---	-------------

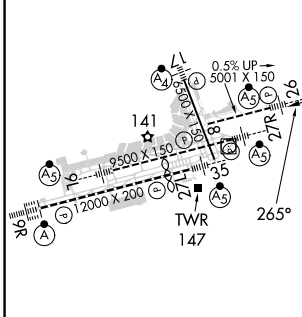
ILS or LOC RWY 26

PHILADELPHIA INTL (PHL)

DME or RADAR required.		MALSR	MALSR APPROACH: Climb to 800 then climbing right turn to 3000 direct PTW VORTAC and hold.	
<p>▼ For inop ALS, increase S-ILS all Cats visibility to RVR 4500 and S-LOC Cats A and B visibility to RVR 5500 and Cat C to 1 1/8 SM. ▲ Rwy 26 helicopter visibility reduction below RVR 4000 NA.</p>				
D-ATIS ARR 133.4 DEP 135.925	PHILADELPHIA APP CON 124.35 319.15	PHILADELPHIA TOWER 118.5 327.05 (Rwys 9L/27R, 8/26 and 17/35) 135.1 327.05 (Rwy 9R/27L)	GND CON 121.9 348.6	CLNC DEL 118.85 348.6



ELEV 36	D	TDZE 36
---------	----------	---------



TDZ/CL Rwy 9R					
HIRL all Rwys					
REIL Rwys 9L and 35					
FAF to MAP 5.7 NM					
Knots	60	90	120	150	180
Min:Sec	5:42	3:48	2:51	2:17	1:54

	800	3000	PTW
	↑	↷	◻
	*LOC only.		
	*I-LLH [2.5]		
	(CFLFX) I-LLH [0.6]	ESKOE I-LLH [6.4] RADAR	FOSOM I-LLH [8.4] RADAR
	2000	2000	2000
	265°	265°	265°
	1.8 NM	3.9 NM	2.1 NM
CATEGORY	A	B	C
S-ILS 26	299/40 263 (300-3/4)		
S-LOC 26	700/40	664 (700-3/4)	700-1 1/2 664 (700-1 1/2)
CIRCLING	700-1	664 (700-1)	700-1 7/8 664 (700-1 7/8)

NE-4, 11 JUL 2024 to 08 AUG 2024

NE-4, 11 JUL 2024 to 08 AUG 2024