

NUN VOR <b>112.25</b>	APP CRS <b>089°</b>	Rwy ldg 7000 TDZE 97 Apt Elev 121
--------------------------	------------------------	--

# VOR RWY 8

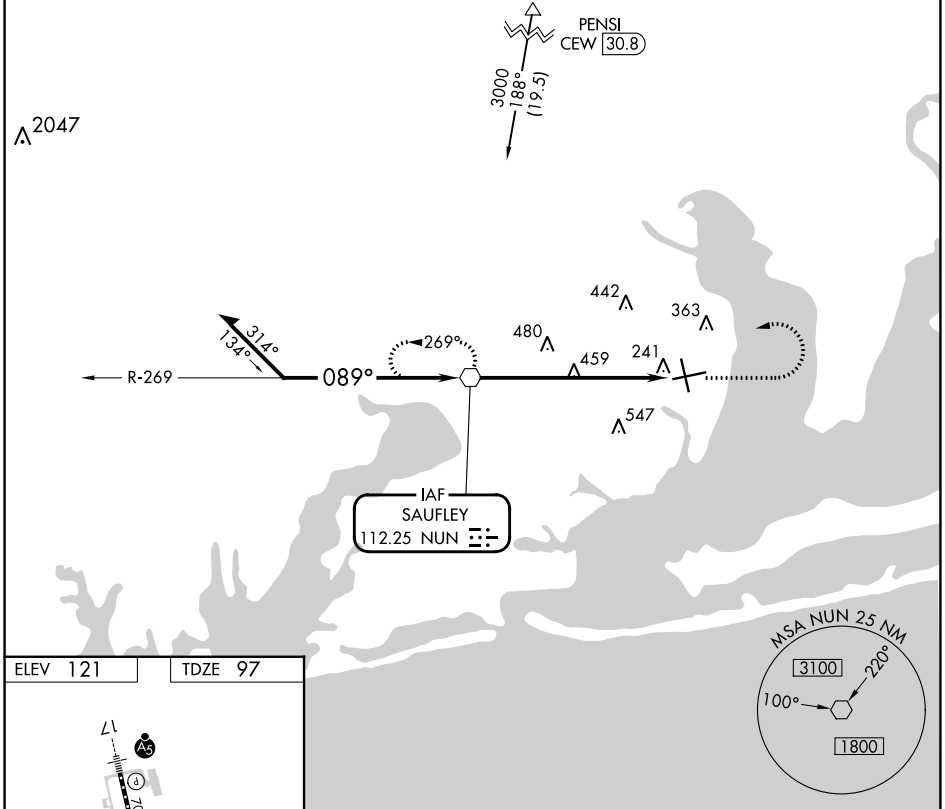
PENSACOLA INTL (PNS)



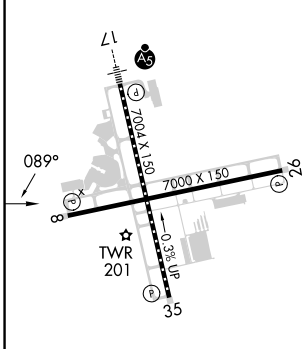
**CAUTION:** Intensive student training in vof airport.  
Rwy 8 helicopter visibility reduction below 3/4 SM NA.

**MISSED APPROACH:** Climb to 2000 then climbing left turn to 2600 direct NUN VOR and hold.

ATIS <b>121.25</b>	PENSACOLA APP CON <b>119.0 269.375</b>	PENSACOLA TOWER ★ <b>119.9 (CTAF) 0 257.8</b>	GND CON <b>121.9 348.6</b>	CLNC DEL <b>123.725 256.875</b>	UNICOM <b>122.95</b>
-----------------------	---	--	-------------------------------	------------------------------------	-------------------------



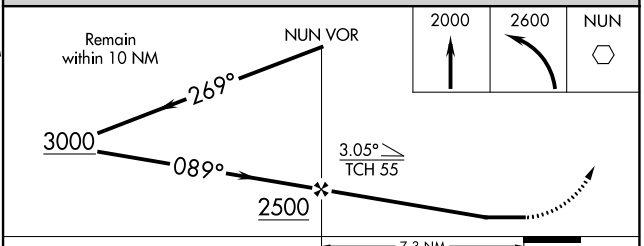
ELEV 121	TDZE 97
----------	---------



REIL Rwy 8, 26 and 35  
TDZ/CL Rwy 17  
HIRL Rwy 8-26 and 17-35

FAF to MAP 7.3 NM

Knots	60	90	120	150	180
Min:Sec	7:18	4:52	3:39	2:55	2:26



CATEGORY	A	B	C	D
S-8	800-1	703 (700-1)	800-2	703 (700-2)
CIRCLING	800-1	679 (700-1)	860-2 739 (800-2)	860-2 1/4 739 (800-2 1/4)

SE-3, 31 OCT 2024 to 28 NOV 2024

SE-3, 31 OCT 2024 to 28 NOV 2024