

# SWABY NINE DEPARTURE (SWABY9.SWABY)


AL-314 [USN] PATUXENT RIVER, MARYLAND

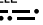
Knots	60	120	180	240	300	360
V/V(fpm)	310	620	930	1240	1550	1860

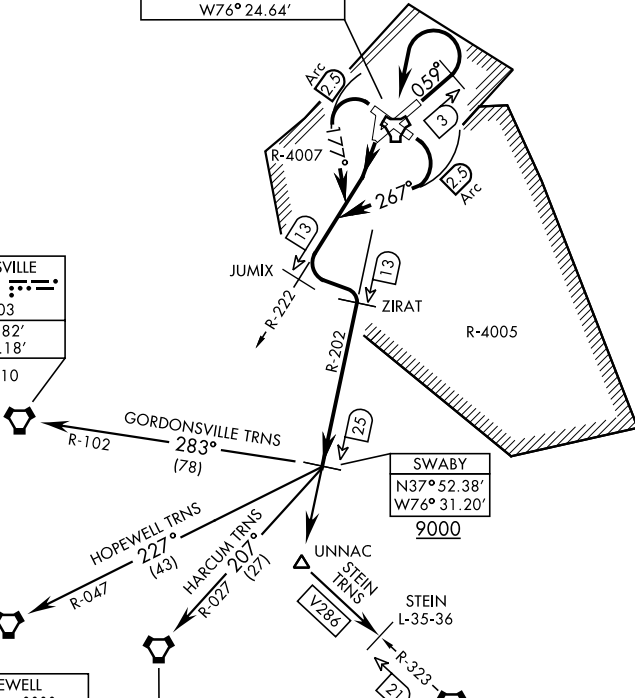
ATC Climb Rate to 9000

Departure Rwy 2-20 not authorized.  
Minimum filing alt 10,000'.

•285  
 ATIS 322.425  
 CLNC DEL  
 135.2 316.125  
 GND CON  
 120.6 336.4  
 PATUXENT TOWER  
 123.7 343.65  
 PATUXENT APP/DEP CON  
 121.0 250.3

NAS PATUXENT RIVER  
 Chan 39 (Y) NHK   
 N38°16.86'  
 W76°24.64'

GORDONSVILLE  
 115.6 GVE   
 Chan 103  
 N38°00.82'  
 W78°09.18'  
 L-36, H-10



ATC BRIEF  
REQUIRED

135.2 316.125

TACAN REQUIRED

Note: Chart not to scale  
(Continued on next page)

# SWABY NINE DEPARTURE (SWABY9.SWABY)

PATUXENT RIVER, MARYLAND