

PATUXENT RIVER, MARYLAND

# RNAV (GPS) RWY 14

APCH CRS <b>136°</b>	Rwy Idg <b>9732</b>
	TDZE <b>27</b>
	Arprt Elev <b>39</b>

(USN) PATUXENT RIVER NAS (TRAPNELL FLD) (KNHK)

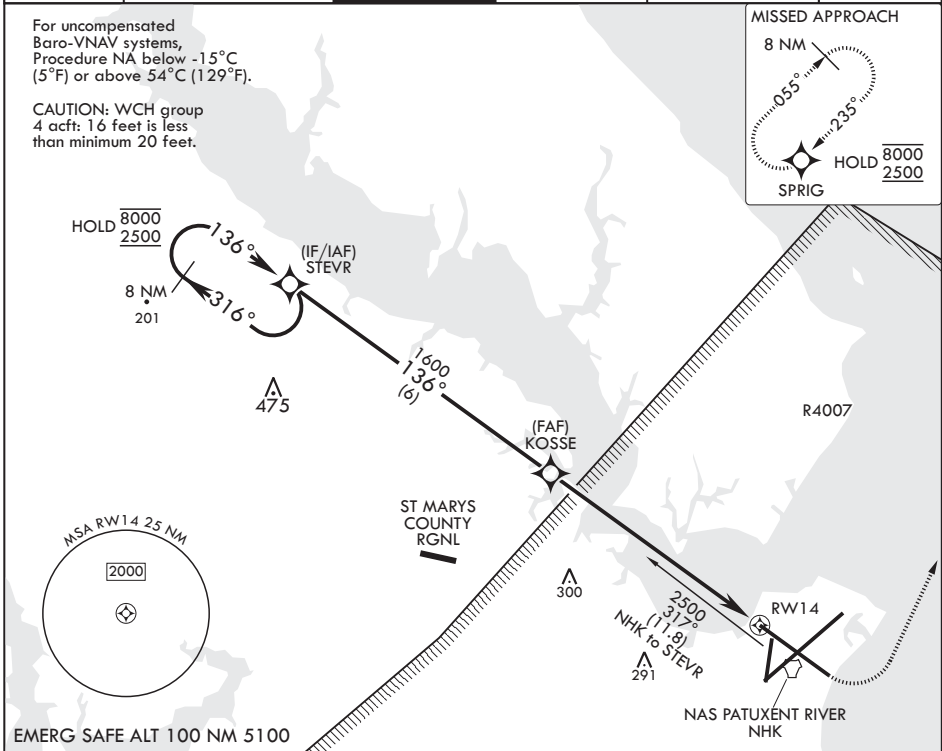
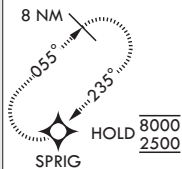
RNP APCH	MISSED APPROACH: Climb to 600, then climbing left turn to 2500 direct SPRIG and hold.
RADAR required	

ATIS <b>322.425</b>	APP CON/DEP CON <b>121.0 250.3</b>	TOWER <b>123.7 343.65</b>	GND CON <b>120.6 336.4</b>	CLNC DEL <b>135.2 316.125</b>	ASR/PAR
------------------------	---------------------------------------	------------------------------	-------------------------------	----------------------------------	---------

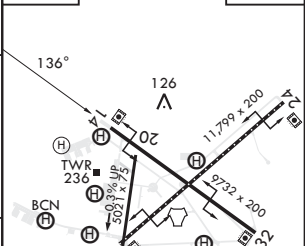
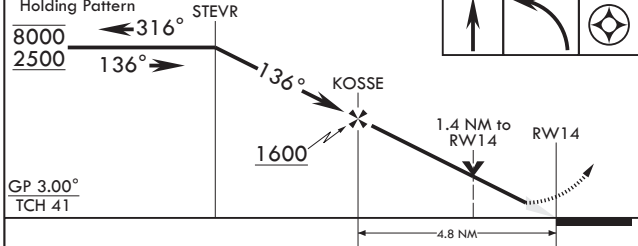
For uncompensated Baro-VNAV systems, Procedure NA, below -15°C (5°F) or above 54°C (129°F).

CAUTION: WCH group 4 aft: 16 feet is less than minimum 20 feet.

### MISSED APPROACH



8 NM Holding Pattern	STEVR	600	2500	SPRIG	ELEV 39	TDZE 27
----------------------	-------	-----	------	-------	---------	---------



CATEGORY	A	B	C	D	E
LNAV/VNAV DA	367-1 340 (400-1)	378-1 351 (400-1)	386-1 359 (400-1)	397-1	370 (400-1)
LNAV MDA	500-1	473 (500-1)	500-1½	473	(500-1½)
<b>C</b> CIRCLING	540-1 501 (600-1)	560-1 521 (600-1)	620-1½ 581 (600-1½)	680-2 641 (700-2)	820-2¾ 781 (800-2¾)

HIRL Rwy 6-24, 14-32  
TDZL/CL Rwy 6

PATUXENT RIVER, MARYLAND

38°17'N - 76°25'W PATUXENT RIVER NAS (TRAPNELL FLD) (KNHK)

Amdt 3 07SEP23

# RNAV (GPS) RWY 14

NE-3, 03 OCT 2024 to 31 OCT 2024

NE-3, 03 OCT 2024 to 31 OCT 2024