

# NDB/DME RWY 6

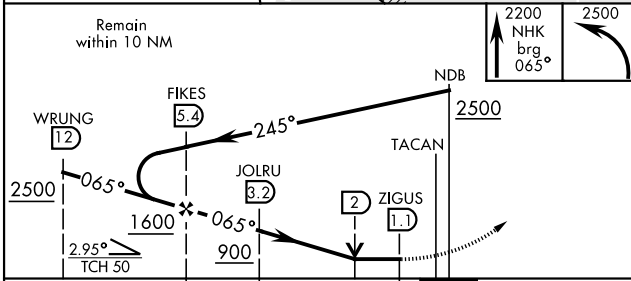
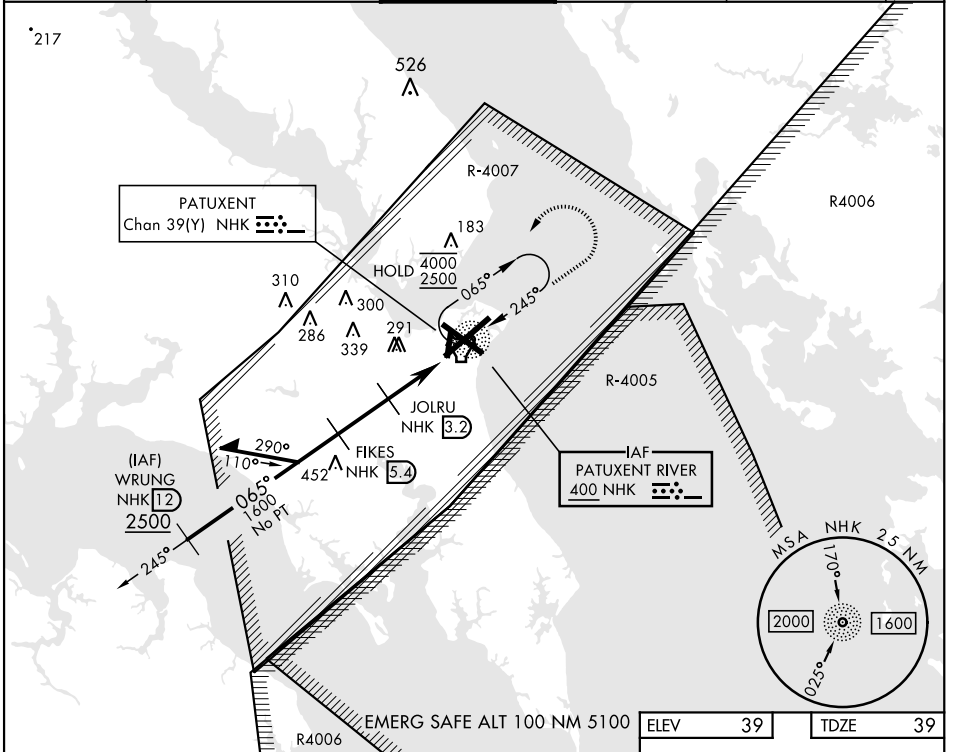
NDB NHK <b>400</b>	APCH CRS <b>065°</b>	Rwy Ldg <b>11,799</b>
		TDZE <b>39</b>
		Arprt Elev <b>39</b>

[USN]

PATUXENT RIVER NAS (TRAPNELL FIELD) (KNKH)

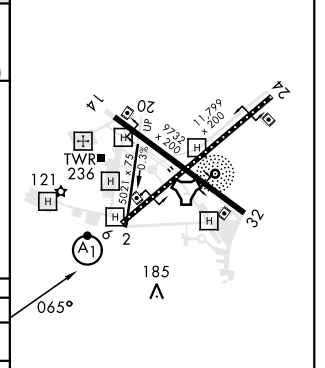
DME or RADAR required		ALSF-1 	MISSED APPROACH: Climb to 2200 on 065° bearing from NHK NDB, then climbing left turn to 2500 direct NHK NDB and hold.
*When ALS inop, increase CAT AB vis to 1 mile, CAT CD vis to 1½ miles.			

ATIS <b>322.425</b>	APP CON <b>121.0 250.3</b>	TOWER <b>123.7 343.65</b>	GND CON <b>120.6 336.4</b>	CLNC DEL <b>135.2 316.125</b>	ASR/PAR
------------------------	-------------------------------	------------------------------	-------------------------------	----------------------------------	---------



ELEV	39	TDZE	39
------	----	------	----

CATEGORY	A	B	C	D
s-6 *	560-¾ 521 (600-¾)		560-1 521 (600-1)	
CIRCLING	560-1 521 (600-1)	600-1 561 (600-1)	620-1½ 581 (600-1½)	680-2 641 (700-2)



# NDB/DME RWY 6

NE-3, 08 AUG 2024 to 05 SEP 2024

NE-3, 08 AUG 2024 to 05 SEP 2024