

PATUXENT RIVER, MARYLAND

HI-TACAN Y RWY 6

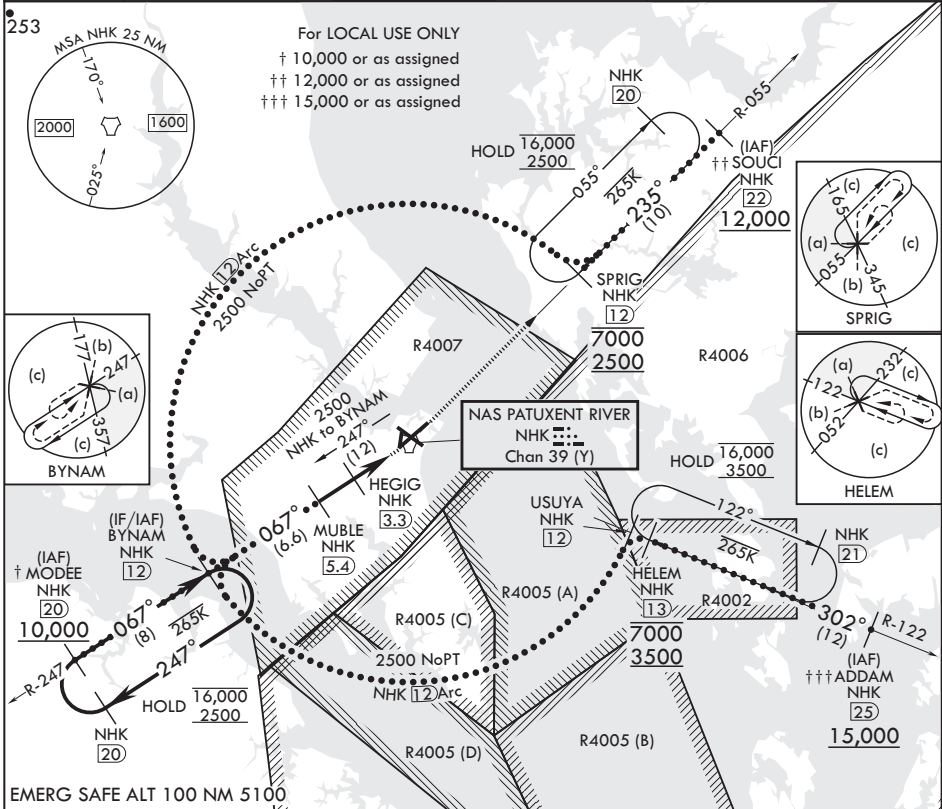
TACAN NHK Chan 39 (Y)	APCH CRS 067°	Rwy ldg TDZE 39	11,799
		Arprt Elev 39	

(USN) PATUXENT RIVER NAS (TRAPNELL FLD) (KNHK)

▼ * When ALS inop, increase CAT CDE vis to 1 3/8 miles.

ALSF-1 MISSED APPROACH: Climb to 2500 direct NHK TACAN and NHK R-055 to SPRIG and hold.

ATIS 322.425	APP CON/DEP CON 121.0 250.3	TOWER 123.7 343.65	GND CON 120.6 336.4	CLNC DEL 135.2 316.125	ASR/PAR
--------------	-----------------------------	--------------------	---------------------	------------------------	---------



8NM Holding Pattern	BYNAM NHK 12	2500 NHK	NHK R-055	SPRIG NHK 12	ELEV 39	TDZE 39
16,000 / 2500	247° / 067°	MUBLE NHK 5.4	HEGIG NHK 3.3	TACAN		
		1600	940	NIVDE NHK 1.1		
			2.95° TCH 50			
			2.1 NM	2.2 NM	.5	
CATEGORY	C	D	E			
S-6*	520-1	481	(500-1)			
CIRCLING	620-1½ 581 (600-1½)	680-2 641 (700-2)	800-2¼ 761 (800-2¼)		HIRL Rwy 6-24, 14-32 TDZL/CL Rwy 6	

PATUXENT RIVER, MARYLAND 38°17'N - 76°25'W PATUXENT RIVER NAS (TRAPNELL FLD) (KNHK)

HI-TACAN Y RWY 6



NE-3, 03 OCT 2024 to 31 OCT 2024

NE-3, 03 OCT 2024 to 31 OCT 2024