

PANAMA CITY, FLORIDA

RNAV (GPS) RWY 32L

WAAS CH 71279 W32B	APCH CRS 319°	Rwy ldg TDZE Arpt Elev	9135 17 17
--	-------------------------	------------------------------	---------------------------------------

(USAF)

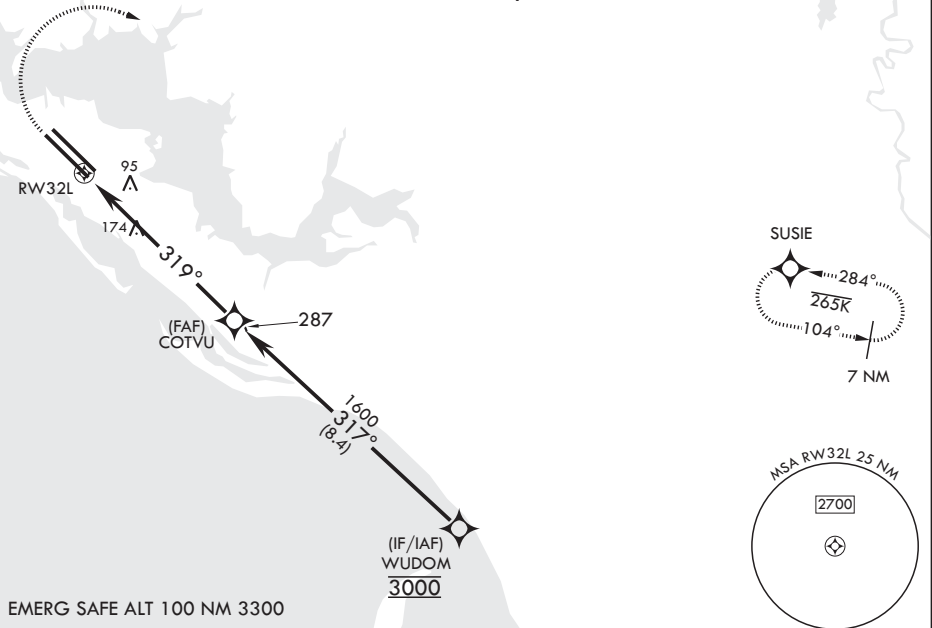
TYNDALL AFB (KPAM)

RNP APCH MISSED APPROACH: Climb to 600 then climbing right turn to 3000 direct SUSIE and hold.

ATIS ★ 254.4	APP CON/DEP CON 119.775 317.45 BLW 5000' 124.15 338.35 ABV 5000'	TOWER ★ 133.95 263.15	GND CON 121.9 259.3	CLNC DEL 118.05 348.7	ASR/PAR
------------------------	--	---------------------------------	-------------------------------	---------------------------------	---------

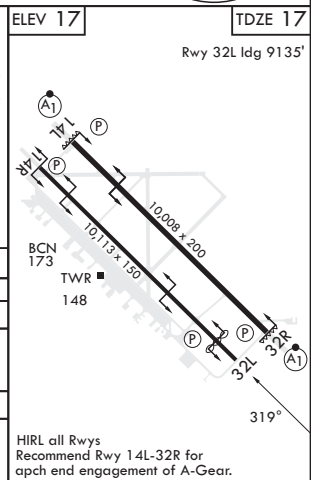
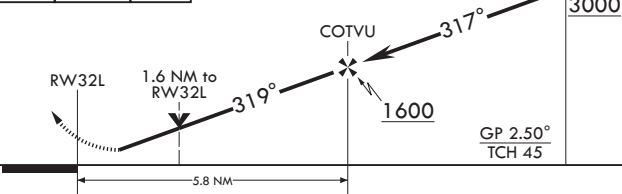
For uncompensated Baro-VNAV systems, Procedure NA below 16°C (61°F) or above 54°C (130°F). Average Cold Temperature based on standard -30.00°C ISA deviation.

115



EMERG SAFE ALT 100 NM 3300

600	3000	SUSIE	VGSI and RNAV glidepath not coincident (VGSI angle 2.50/TCH 40).	WUDOM	ELEV 17	TDZE 17
-----	------	-------	--	-------	---------	---------



CATEGORY	A	B	C	D	E
LPV DA	217-3/4		200	(200-3/4)	
LNAV/VNAV DA	291-7/8 274 (300-3/8)	302-7/8 285 (300-7/8)	310-7/8 293 (300-7/8)	321-7/8	304 (400-7/8)
LNAV MDA	480-1	463 (500-1)	480-1 1/2	463	(500-1 1/2)
☐ CIRCLING	540-1	523 (600-1)	540-1 1/2 523 (600-1 1/2)	580-2 563 (600-2)	620-2 1/4 603 (700-2 1/4)

HIRL all Rwy's Recommend Rwy 14L-32R for apch end engagement of A-Gear.

PANAMA CITY, FLORIDA

30°04'N - 85°34'W

TYNDALL AFB (KPAM)

Amdt 3 22APR21

RNAV (GPS) RWY 32L

SE-3, 03 OCT 2024 to 31 OCT 2024

SE-3, 03 OCT 2024 to 31 OCT 2024