

PANAMA CITY, FLORIDA

# RNAV (GPS) RWY 14L

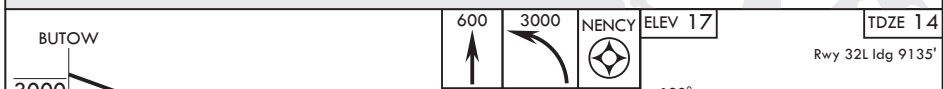
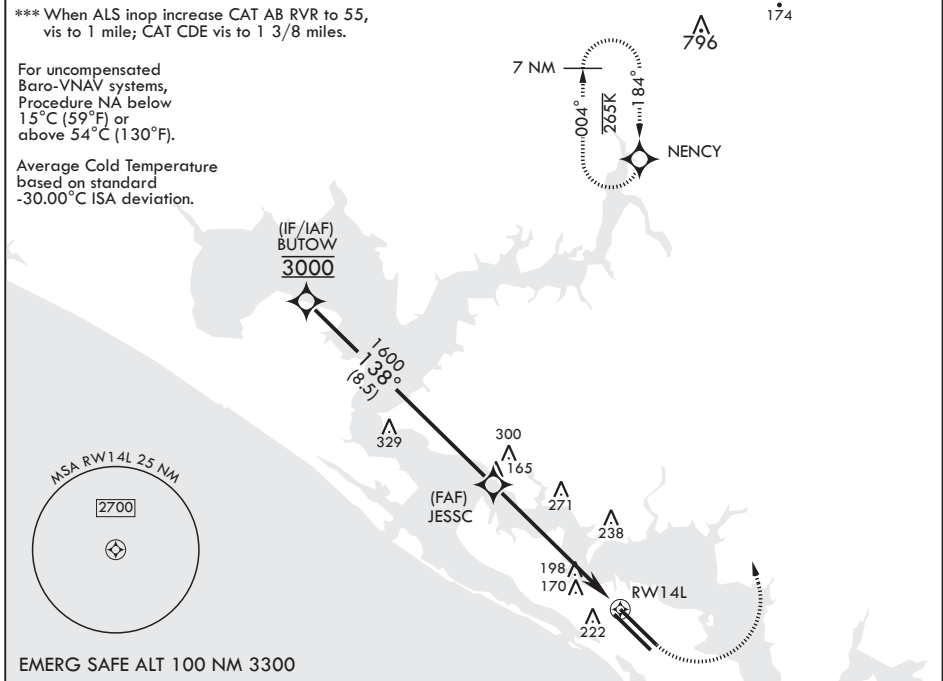
WAAS CH 71271 W14A	APCH CRS 138°	Rwy ldg 10,008	TDZE 14
		Arpt Elev 17	

- (USAF)

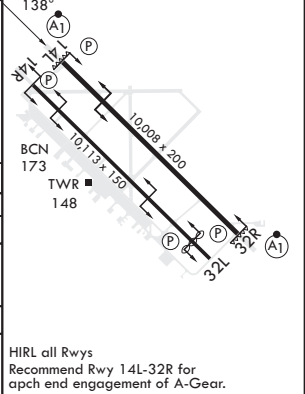
TYNDALL AFB (KPAM)

RNP APCH	ALSF-1	MISSED APPROACH: Climb to 600 then climbing left turn to 3000 direct NENCY and hold.
----------	--------	--

ATIS* 254.4	APP CON/DEP CON 119.775 317.45 BLW 5000' 124.15 338.35 ABV 5000'	TOWER* 133.95 263.15	GND CON 121.9 259.3	CLNC DEL 118.05 348.7	ASR/PAR
----------------	--	-------------------------	------------------------	--------------------------	---------



CATEGORY	A	B	C	D	E
LPV DA*	214/24		200	(200-½)	
LNAV/VNAV DA**	276/24 262 (300-½)	287/24 273 (300-½)	295/24 281 (300-½)	306/24 292 (300-½)	
LNAV MDA***	500/24 486 (500-½)		500/50	486	(500-1)
<b>C</b> CIRCLING	540-1 523 (600-1)		540-1½ 523 (600-½)	580-2 563 (600-2)	620-2¼ 603 (700-2¼)



PANAMA CITY, FLORIDA

30°04'N - 85°34'W

TYNDALL AFB (KPAM)

Amdt 4 20MAY21

# RNAV (GPS) RWY 14L

SE-3, 03 OCT 2024 to 31 OCT 2024

SE-3, 03 OCT 2024 to 31 OCT 2024