

PANAMA CITY, FLORIDA

# ILS or LOC Z RWY 14L

LOC I-TYF <b>111.5</b>	APCH CRS <b>138°</b>	Rwy Idg <b>10,008</b> TDZE <b>14</b> Arpt Elev <b>17</b>
---------------------------	-------------------------	--

[USAF]

TYNDALL AFB (KPAM)

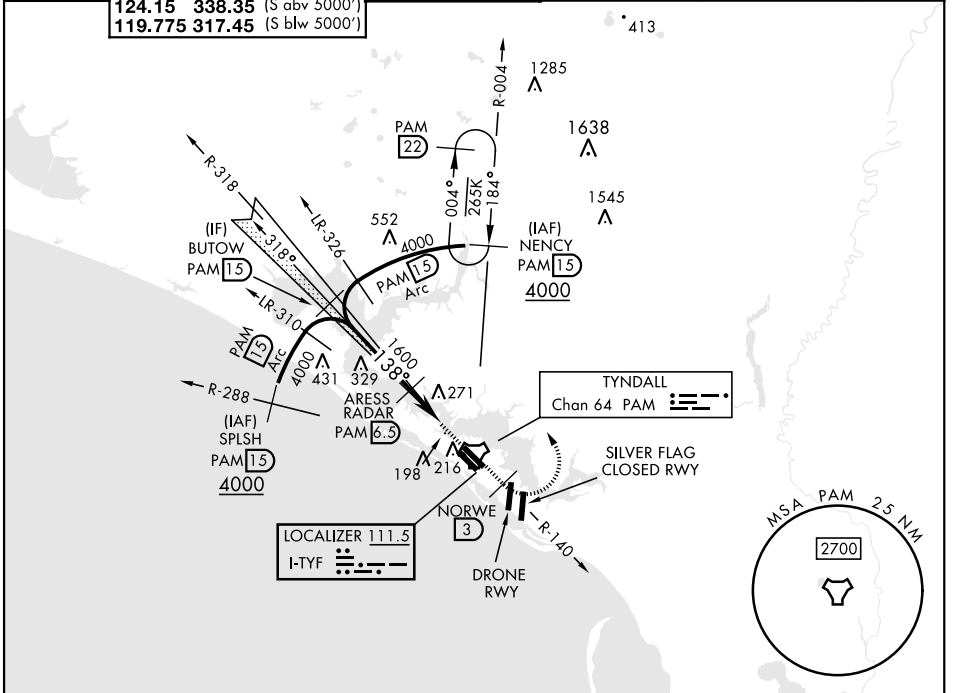
DME or RADAR required

\* When ALS inop, increase RVR to 40 and vis to 3/8 mile.  
 \*\* When ALS inop, increase CAT AB RVR to 55, vis to 1 mile;  
 CAT CDE vis to 1 3/8 miles.

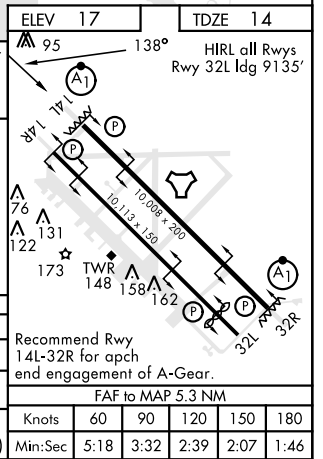
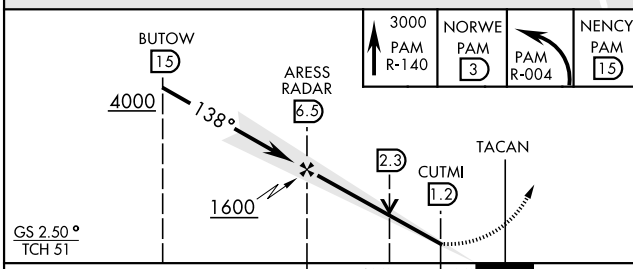


MISSED APPROACH: Track outbound PAM TACAN R-140 to 3 DME (NORWE), then turn left to join PAM R-004 to 15 DME (NENCY) and hold. Maintain 3000.

ATIS ★ <b>254.4</b>	APP CON <b>125.2</b> 392.1 (N abv 5000') <b>120.825</b> 379.3 (N blw 5000') <b>124.15</b> 338.35 (S abv 5000') <b>119.775</b> 317.45 (S blw 5000')	TOWER ★ <b>133.95</b> <b>263.15</b>	GND CON <b>121.9</b> <b>259.3</b>	CLNC DEL <b>118.05</b> <b>348.7</b>	ASR/PAR
------------------------	--	--	--------------------------------------	--	---------



EMERG SAFE ALT 100 NM 3300



CATEGORY	A	B	C	D	E
S-ILS 14L *	214/24		200	(200-1/2)	
S-LOC 14L **	500/24	486 (500-1/2)	500/50	486	(500-1)
CIRCLING	540-1	523 (600-1)	540-1 1/2 523 (600-1 1/2)	580-2 563 (600-2)	620-2 1/4 603 (700-2 1/4)

ELEV 17	TDZE 14				
HIRL all Rwys Rwy 32L Idg 9135'					
Knots	60	90	120	150	180
Min:Sec	5:18	3:32	2:39	2:07	1:46

PANAMA CITY, FLORIDA  
Amdt 4 20MAY21

30°04'N-85°34'W

TYNDALL AFB (KPAM)

# ILS or LOC Z RWY 14L

SE-3, 03 OCT 2024 to 31 OCT 2024

SE-3, 03 OCT 2024 to 31 OCT 2024