

HI-TACAN Y RWY 32L

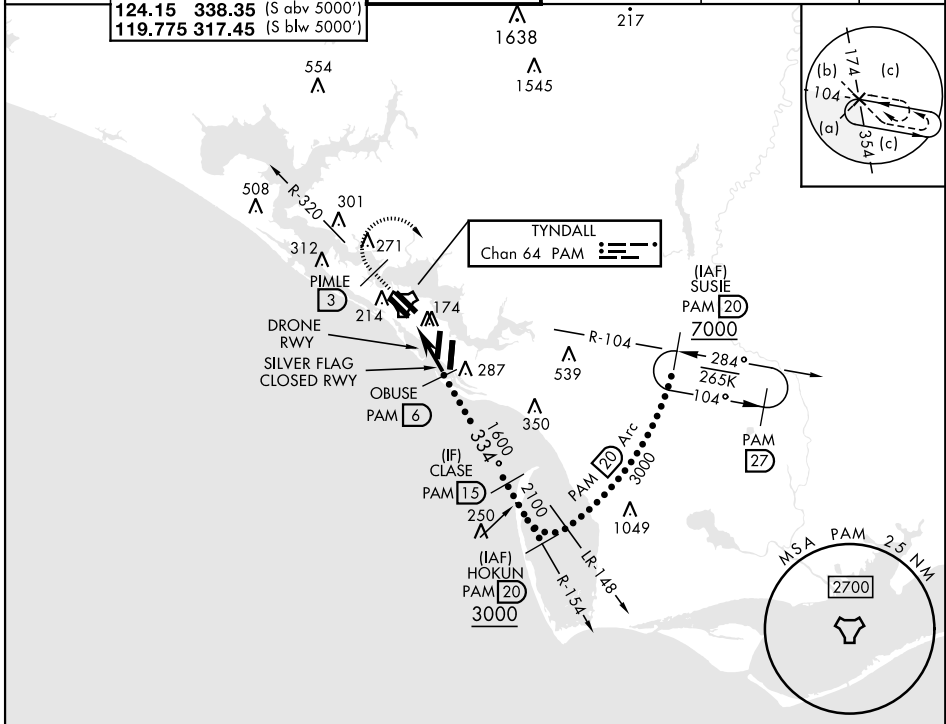
TACAN PAM Chan 64	APCH CRS 334°	Rwy Ldg TDZE Arpt Elev	9135 17 17
-----------------------------	-------------------------	------------------------------	---------------------------------------

[USAF]

TYNDALL AFB (KPAM)

MISSED APPROACH: Track outbound PAM TACAN R-320 to 3 DME (PIMLE), then turn right to join PAM R-104 to 20 DME (SUSIE) and hold. Maintain 3000.

ATIS ★ 254.4	APP CON 125.2 392.1 (N abv 5000') 120.825 379.3 (N blw 5000') 124.15 338.35 (S abv 5000') 119.775 317.45 (S blw 5000')	TOWER ★ 133.95 263.15	GND CON 121.9 259.3	CLNC DEL 118.05 348.7	ASR/PAR
------------------------	--	---------------------------------	-------------------------------	---------------------------------	---------



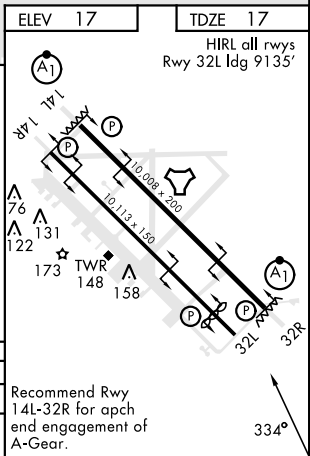
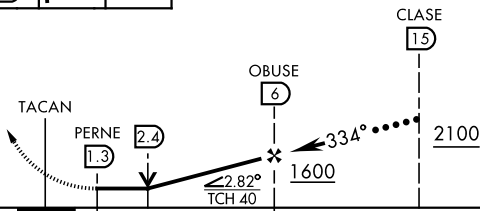
SE-3, 03 OCT 2024 to 31 OCT 2024

SE-3, 03 OCT 2024 to 31 OCT 2024

EMERG SAFE ALT 100 NM 3300

3000 PAM R-320	PIMLE PAM (3)	SUSIE PAM (20)
----------------------	---------------------	----------------------

VGSI and descent angles not coincident (VGSI Angle 2.50/TCH 40).



CATEGORY	C	D	E
S-32L	540-1½	480-1¾ 463 (500-1¾)	620-2¼
CIRCLING	523 (600-1½)	580-2 563 (600-2)	603 (700-2¼)

Recommend Rwy 14L-32R for apch end engagement of A-Gear.

HI-TACAN Y RWY 32L