

HI-ILS or LOC Y RWY 14L

| | | |
|---------------------------|-------------------------|---|
| LOC I-TYF 111.5 | APCH CRS 138° | Rwy ldg 10,008 TDZE 14 Arprt Elev 17 |
|---------------------------|-------------------------|---|

[USAF]

TYNDALL AFB (KPAM)

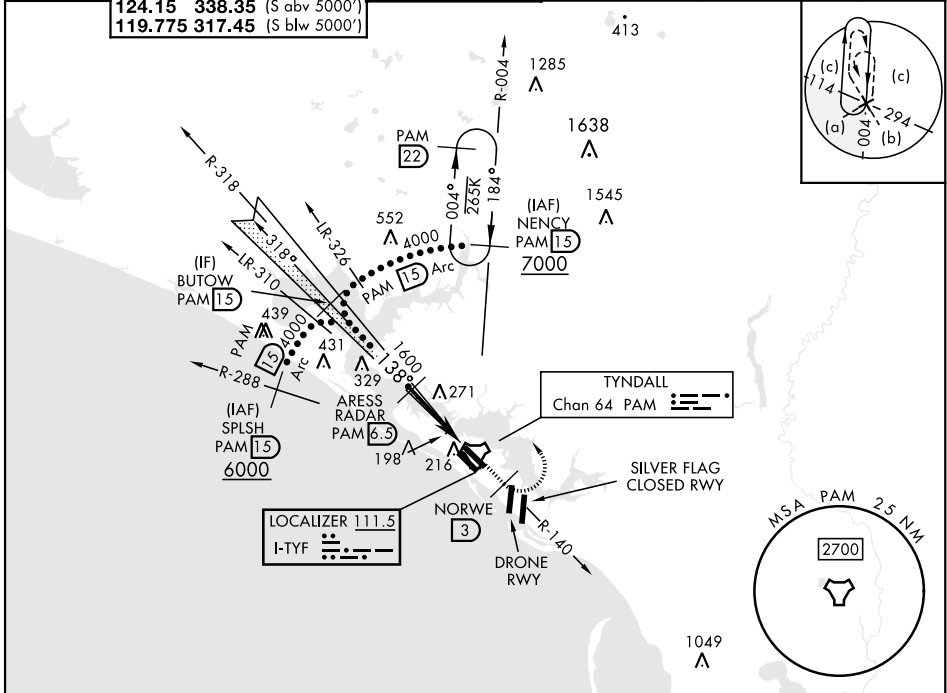
DME or RADAR required.

- * When ALS inop, increase RVR to 40, vis to 3/4 mile.
- ** When ALS inop, increase vis to 1 1/2 miles.

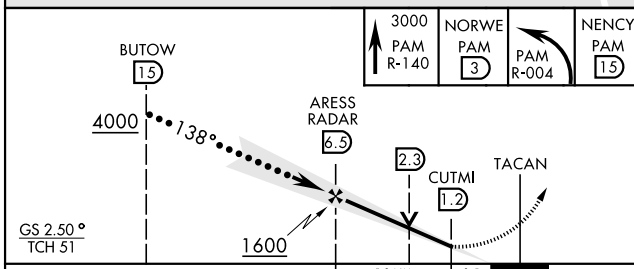


MISSED APPROACH: Track outbound PAM TACAN R-140 to 3 DME (NORWE), then turn left to join PAM R-004 to 15 DME (NENY) and hold. Maintain 3000.

| | | | | | |
|------------------------|--|--|--------------------------------------|--|---------|
| ATIS ★ 254.4 | APP CON 125.2 392.1 (N abv 5000') 120.825 379.3 (N blw 5000') 124.15 338.35 (S abv 5000') 119.775 317.45 (S blw 5000') | TOWER ★ 133.95 263.15 | GND CON 121.9 259.3 | CLNC DEL 118.05 348.7 | ASR/PAR |
|------------------------|--|--|--------------------------------------|--|---------|



EMERG SAFE ALT 100 NM 3300



| | |
|--|--------------------------|
| ELEV 17 | TDZE 14 |
| HIRL all Rwys Rwy 32L ldg 9135' | |
| | |
| Recommend Rwy 14L-32R for apch end engagement of A-Gear. | |
| FAF to MAP 5.3 NM | |
| Knots | 120 140 160 180 200 |
| Min:Sec | 2:39 2:16 1:59 1:46 1:35 |

| CATEGORY | C | D | E |
|--------------|-----------------|-------------|-----------------|
| S-ILS 14L * | 214/24 | 200 | (200-1/2) |
| S-LOC 14L ** | 500/50 | 486 | (500-1) |
| CIRCLING | 540-1 1/2 | 580-2 | 620-2 1/4 |
| | 523 (600-1 1/2) | 563 (600-2) | 603 (700-2 1/4) |

HI-ILS or LOC Y RWY 14L

SE-3, 31 OCT 2024 to 28 NOV 2024

SE-3, 31 OCT 2024 to 28 NOV 2024