


APP CRS	Rwy Idg	8153
358°	TDZE	979
	Apt Elev	985

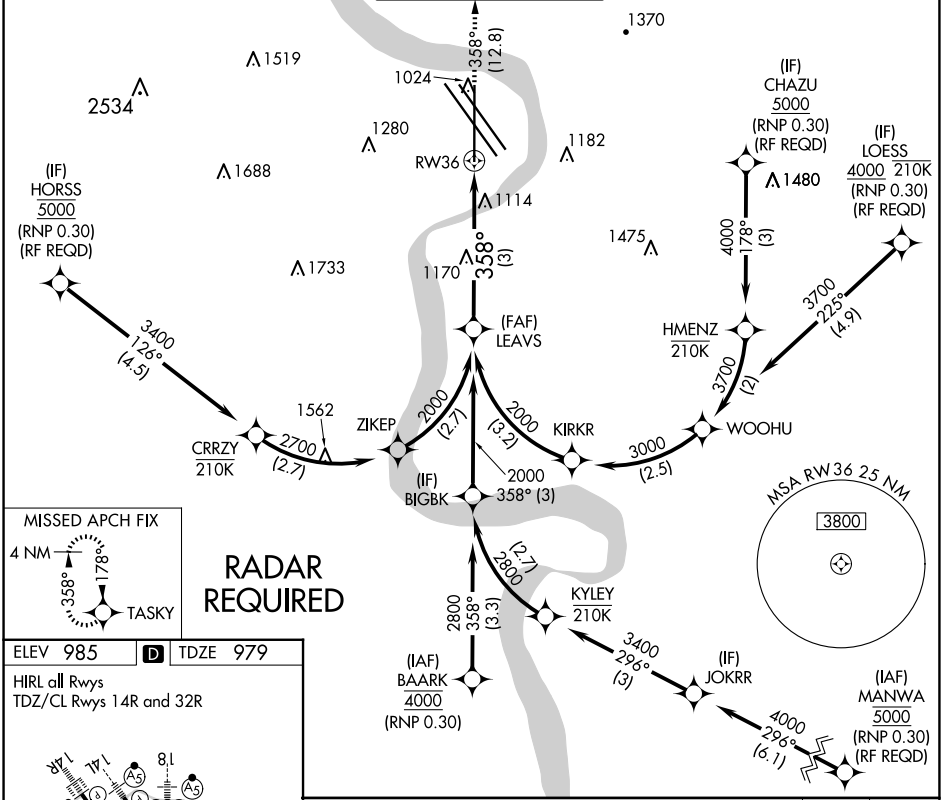
RNAV (RNP) Z RWY 36

EPPLEY AIRFIELD (OMA)

▽ For uncompensated Baro-VNAV systems, procedure NA below -19°C (-2°F) or above 54°C (130°F). When VGSI inop, procedure NA at night. For inop ALS, increase RNP 0.30 all Cats visibility to 1½ SM. GPS required.

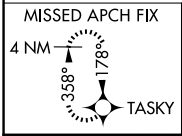
MALSRL  MISSED APPROACH: Climb to 3000 on track 358° to TASKY and hold.

D-ATIS 120.4	OMAHA APP CON 135.875 354.05	OMAHA TOWER 132.1 256.9	GND CON 121.9	CLNC DEL 119.9
------------------------	----------------------------------------	-----------------------------------	-------------------------	--------------------------



NC-2, 17 APR 2025 to 15 MAY 2025

NC-2, 17 APR 2025 to 15 MAY 2025



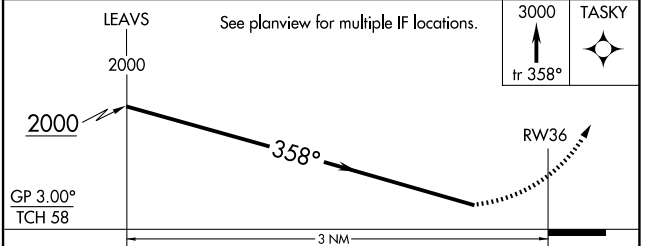
RADAR REQUIRED

ELEV 985	D	TDZE 979
----------	----------	----------

HIRL all Rwys
TDZ/CL Rwys 14R and 32R

TWR 1097

36
358°



CATEGORY	A	B	C	D
RNP 0.30 DA	1425-1 446 (500-1)			

AUTHORIZATION REQUIRED