

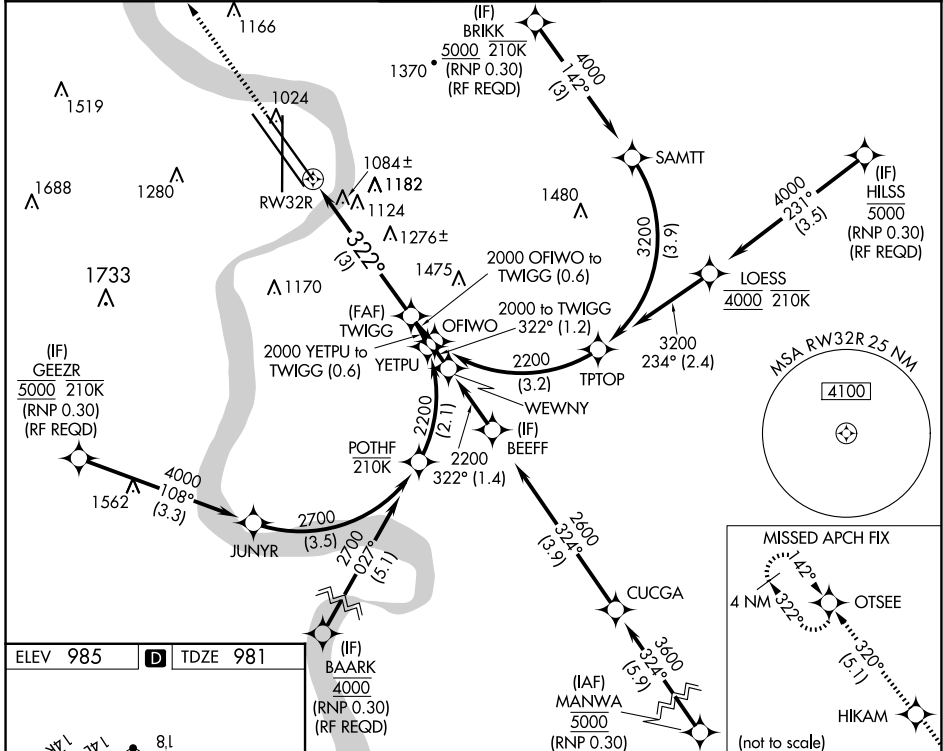
# RNAV (RNP) Z RWY 32R

EPPLEY AIRFIELD (OMA)

APP CRS	Rwy Idg	<b>8500</b>
<b>322°</b>	TDZE	<b>981</b>
	Apt Elev	<b>985</b>

RNP AR APCH. RF required.	ALSF-2	MISSED APPROACH: Climb to 3300 direct HIKAM and track 320° to OTSEE and hold.
▼ For uncompensated Baro-VNAV systems, procedure NA below -19°C or above 54°C. For inop ALS, increase RNP 0.30 all Cats visibility to 1 1/4 SM.		

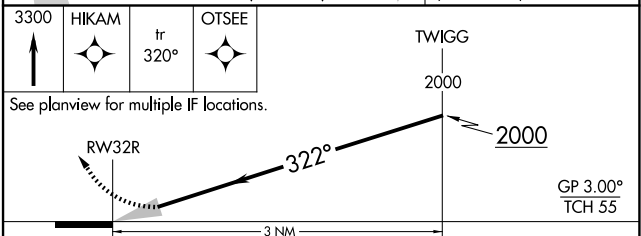
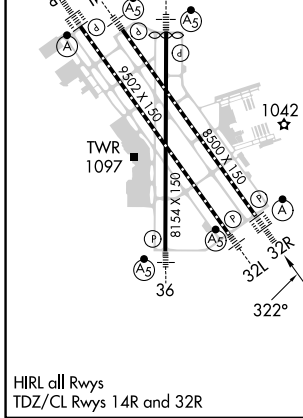
D-ATIS	OMAHA APP CON	OMAHA TOWER	GND CON	CLNC DEL
<b>120.4</b>	<b>135.875 354.05</b>	<b>132.1 256.9</b>	<b>121.9</b>	<b>119.9</b>



NC-2, 17 APR 2025 to 15 MAY 2025

NC-2, 17 APR 2025 to 15 MAY 2025

ELEV 985	<b>D</b>	TDZE 981
----------	----------	----------



CATEGORY	A	B	C	D
RNP 0.11 DA		1313/26	332 (400-1/2)	
RNP 0.15 DA		1407/40	426 (500-3/4)	
RNP 0.30 DA		1607-1 3/8	626 (700-1 3/8)	

**AUTHORIZATION REQUIRED**