


APP CRS	Rwy Idg	<b>9502</b>
<b>322°</b>	TDZE	<b>981</b>
	Apt Elev	<b>985</b>

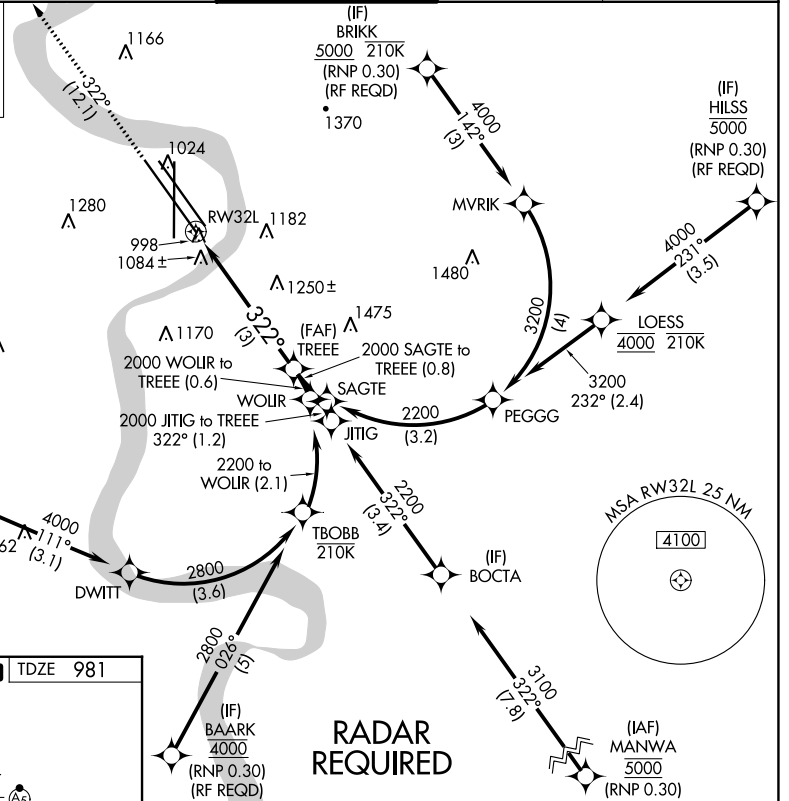
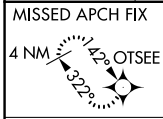
# RNAV (RNP) Z RWY 32L

EPPLEY AIRFIELD (OMA)

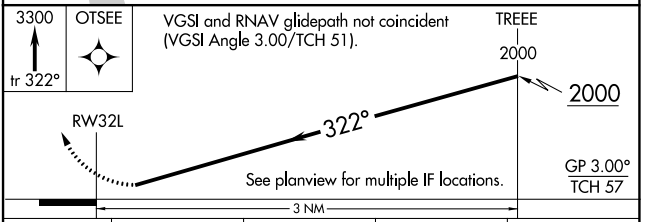
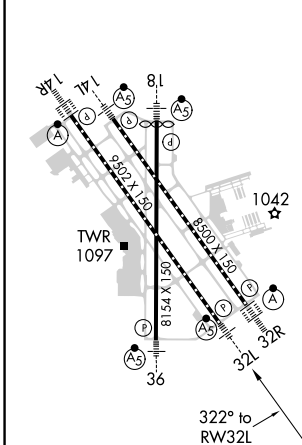
**▼** For uncompensated Baro-VNAV systems, procedure NA below -19°C (-2°F) or above 54°C (130°F). When VGSI inop, procedure NA at night.  
 For inoperative ALS, increase RNP 0.15 all Cats visibility to 1¼ SM and RNP 0.30 all Cats visibility to 2¼ SM. GPS required.

**MALSR**  
  
**MISSED APPROACH:**  
 Climb to 3300 on track 322° to OTSEE and hold.

D-ATIS	OMAHA APP CON	OMAHA TOWER	GND CON	CLNC DEL
<b>120.4</b>	<b>120.1 354.05</b>	<b>132.1 256.9</b>	<b>121.9</b>	<b>119.9</b>



ELEV 985	<b>D</b>	TDZE 981
----------	----------	----------



CATEGORY	A	B	C	D
RNP 0.15 DA		1359/50	378 (400-1)	
RNP 0.30 DA		1624-1¾	643 (700-1¾)	

## AUTHORIZATION REQUIRED

NC-2, 08 AUG 2024 to 05 SEP 2024

NC-2, 08 AUG 2024 to 05 SEP 2024