

ROYAL TWO DEPARTURE

AL-302 (FAA)

NEW CENTURY AIRCENTER (IXD)

OLATHE, KANSAS

NC-2, 31 OCT 2024 to 28 NOV 2024

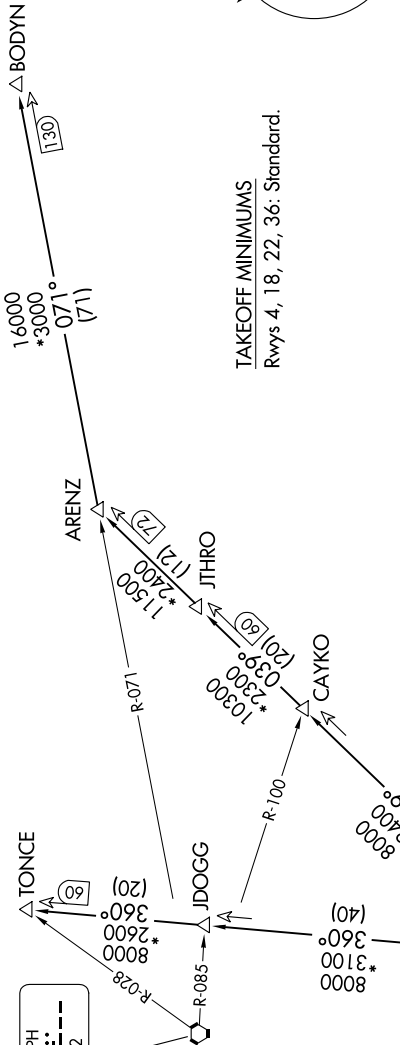
KANSAS CITY DEP CON
118.9 251.075

ST. JOSEPH
115.5 STJ
Chan 102

KANSAS CITY
113.25 MCI
Chan 79(V)

RADAR and DME required.

TOP ALTITUDE:
10000



TAKEOFF MINIMUMS
Rwys 4, 18, 22, 36: Standard.

DEPARTURE ROUTE DESCRIPTION

TAKEOFF ALL RUNWAYS: Climb on assigned heading for RADAR vectors to appropriate route. Maintain 10000, expect filed altitude 10 minutes after departure.

ARENZ TRANSITION (ROYAL2.ARENZ): From over MCI VORTAC on MCI R-039 to ARENZ.

BODYN TRANSITION (ROYAL2.BODYN): From over MCI VORTAC on MCI R-039 to ARENZ, then on STJ R-071 to BODYN.

TONCE TRANSITION (ROYAL2.TONCE): From over MCI VORTAC on MCI R-360 to TONCE.

NOTE: Chart not to scale.

ROYAL TWO DEPARTURE

OLATHE, KANSAS

NEW CENTURY AIRCENTER (IXD)

NC-2, 31 OCT 2024 to 28 NOV 2024