

WAAS CH 86439 W04A	APP CRS 043°	Rwy Idg TDZE Apt Elev	5132 1080 1087
--	------------------------	-----------------------------	---

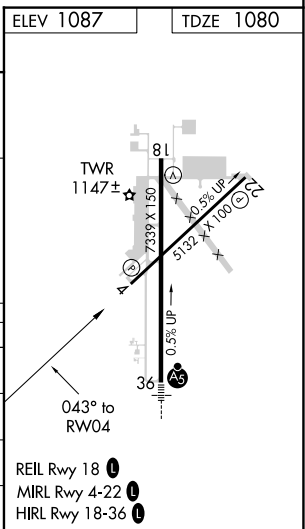
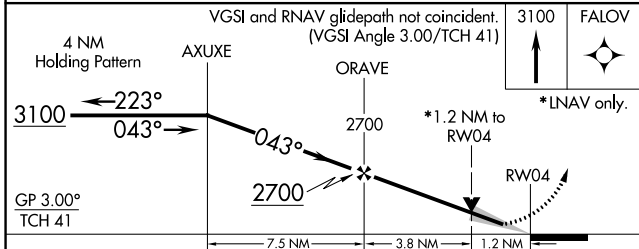
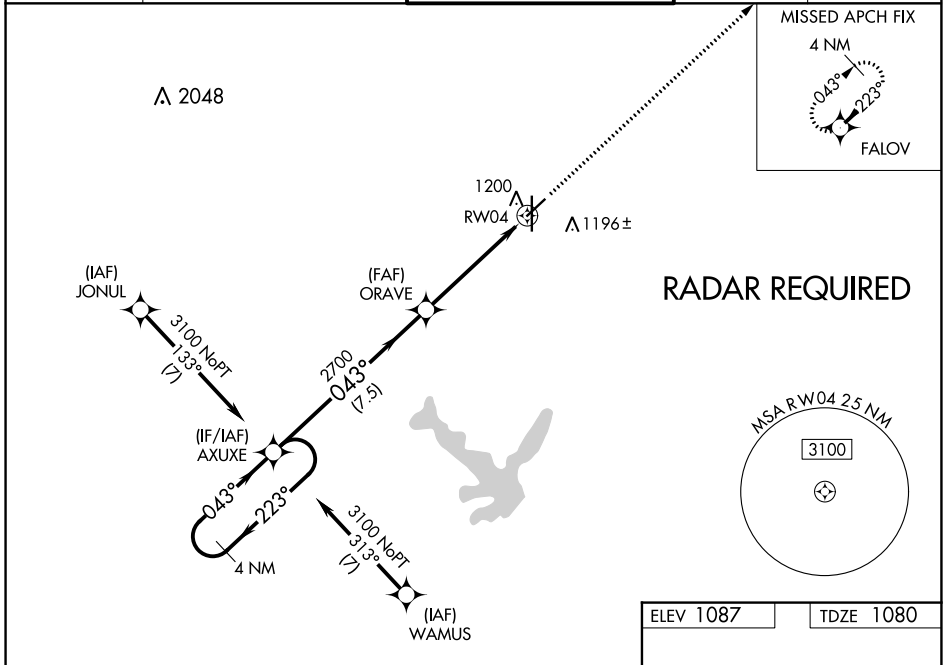
RNAV (GPS) RWY 4

NEW CENTURY AIRCENTER (IXD)

⚠ For uncompensated Baro-VNAV systems, LNAV/VNAV NA below -17°C (-2°F) or above 54°C (130°F). Baro-VNAV and VDP NA when using Johnson County Exec altimeter setting. DME/DME RNP-0.3 NA. When local altimeter setting not received, use Johnson County Exec altimeter setting: increase LPV DA to 1348 feet and LNAV/VNAV DA to 1448 feet and all MDA 20 feet; increase LNAV Cat C/D visibility 1/8 mile.

MISSED APPROACH: Climb to 3100 direct FALOV and hold.

ASOS 135.325	KANSAS CITY APP CON 118.9 251.075	NEW CENTURY TOWER ★ 133.0 (CTAF) 0	GND CON 124.3	UNICOM 122.95
------------------------	---	--	-------------------------	-------------------------



CATEGORY	A	B	C	D
LPV DA	1330-1 250 (300-1)			
LNAV/VNAV DA	1430-1¼ 350 (400-1¼)			
LNAV MDA	1500-1	420 (500-1)	1500-1½	420 (500-1½)
C CIRCLING	1560-1	473 (500-1)	1580-1½	1640-2 553 (600-2)

NC-2, 08 AUG 2024 to 05 SEP 2024

NC-2, 08 AUG 2024 to 05 SEP 2024