

CHIEF NINE DEPARTURE

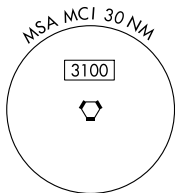
AL-302 (FAA)

NEW CENTURY AIRCENTER (IXD)
OLATHE, KANSAS

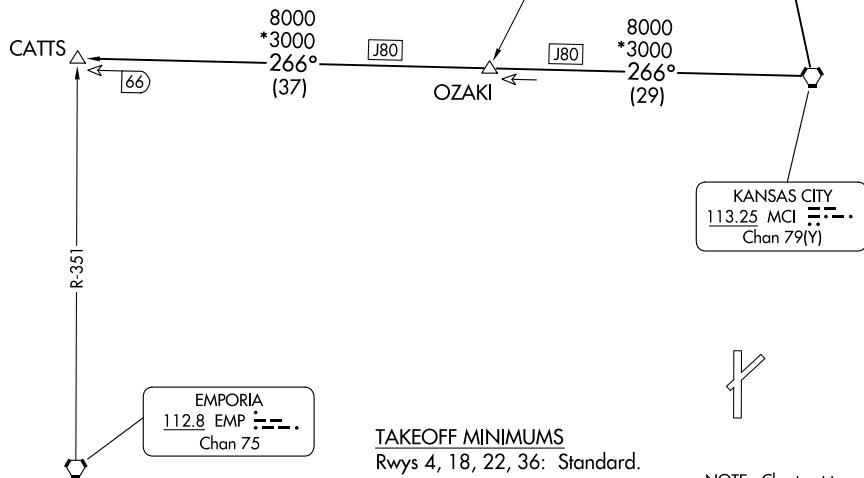
KANSAS CITY DEP CON
118.9 251.075

**TOP ALTITUDE:
10000**

RADAR required.



ST. JOSEPH
115.5 STJ
Chan 102



TAKEOFF MINIMUMS
Rwys 4, 18, 22, 36: Standard.

NOTE: Chart not to scale.

DEPARTURE ROUTE DESCRIPTION

TAKEOFF ALL RUNWAYS: Climb on assigned heading for RADAR vectors to appropriate route. Maintain 10000 or as assigned by ATC, expect filed altitude 10 minutes after departure.

CATTS TRANSITION (CHIEF9.CATTS): From over MCI VORTAC on MCI R-266 to CATTS.

ST. JOSEPH TRANSITION (CHIEF9.STJ): From over MCI VORTAC on MCI R-343 and STJ R-160 to STJ VORTAC.

CHIEF NINE DEPARTURE

(CHIEF9.MCI) 05OCT23

OLATHE, KANSAS
NEW CENTURY AIRCENTER (IXD)

NC-2, 08 AUG 2024 to 05 SEP 2024

NC-2, 08 AUG 2024 to 05 SEP 2024