

WAAS CH <b>50434</b> <b>W12A</b>	APP CRS <b>120°</b>	Rwy Idg TDZE Apt Elev	<b>8001</b> <b>2777</b> <b>2777</b>
--	------------------------	-----------------------------	---

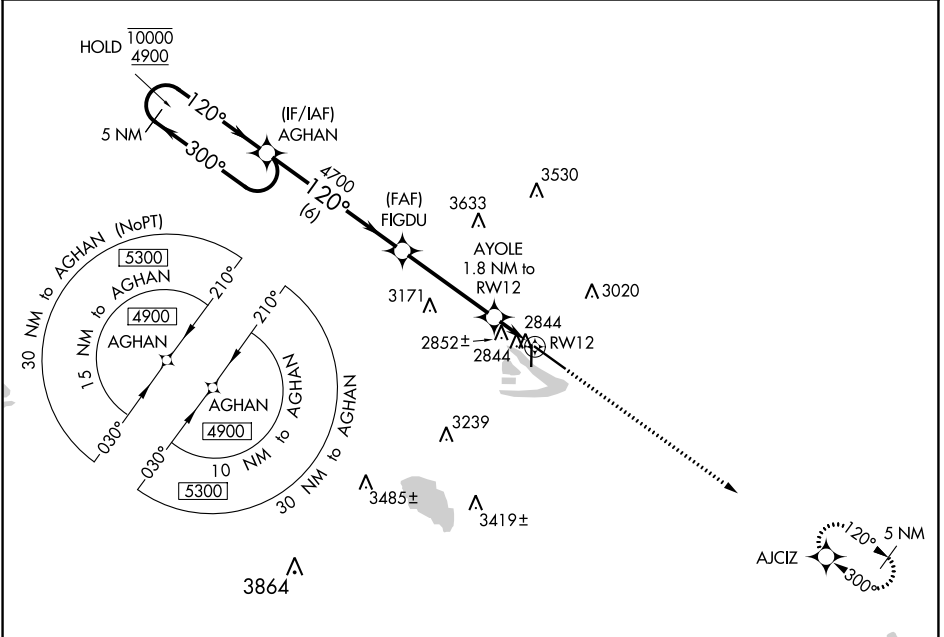
# RNAV (GPS) RWY 12

NORTH PLATTE RGNL/LEE BIRD FLD (LBF)

RNP APCH-GPS. MISSED APPROACH: Climb to 4700 direct AJCIZ and hold.

**⚠** For uncompensated Baro-VNAV systems, LNAV/VNAV NA below -23°C or above 52°C.

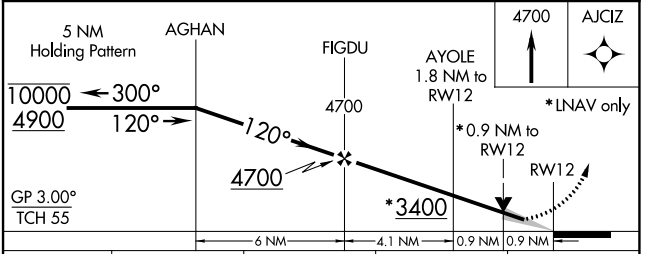
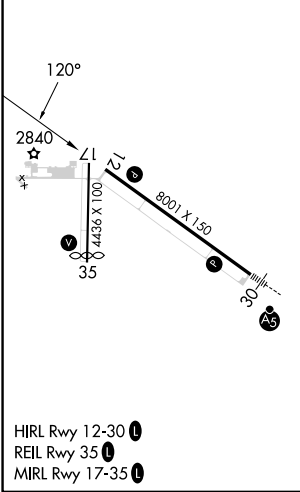
ASOS <b>118.425</b>	DENVER CENTER <b>132.7 226.675</b>	CLNC DEL <b>132.7</b>	UNICOM <b>123.0 (CTAF)</b>
------------------------	---------------------------------------	--------------------------	-------------------------------



NC-2, 31 OCT 2024 to 28 NOV 2024

NC-2, 31 OCT 2024 to 28 NOV 2024

ELEV <b>2777</b>	<b>D</b>	TDZE <b>2777</b>
------------------	----------	------------------



CATEGORY	A	B	C	D
LPV DA	2977-3/4 200 (200-3/4)			
LNAV/VNAV DA	3027-3/4 250 (300-3/4)			
LNAV MDA	3120-1 343 (400-1)			
<b>C</b> CIRCLING	3280-1 503 (600-1)	3340-1 563 (600-1)	3420-1 3/4 643 (700-1 3/4)	3560-2 1/2 783 (800-2 1/2)