

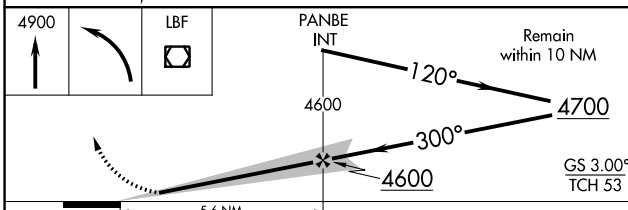
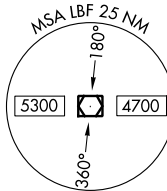
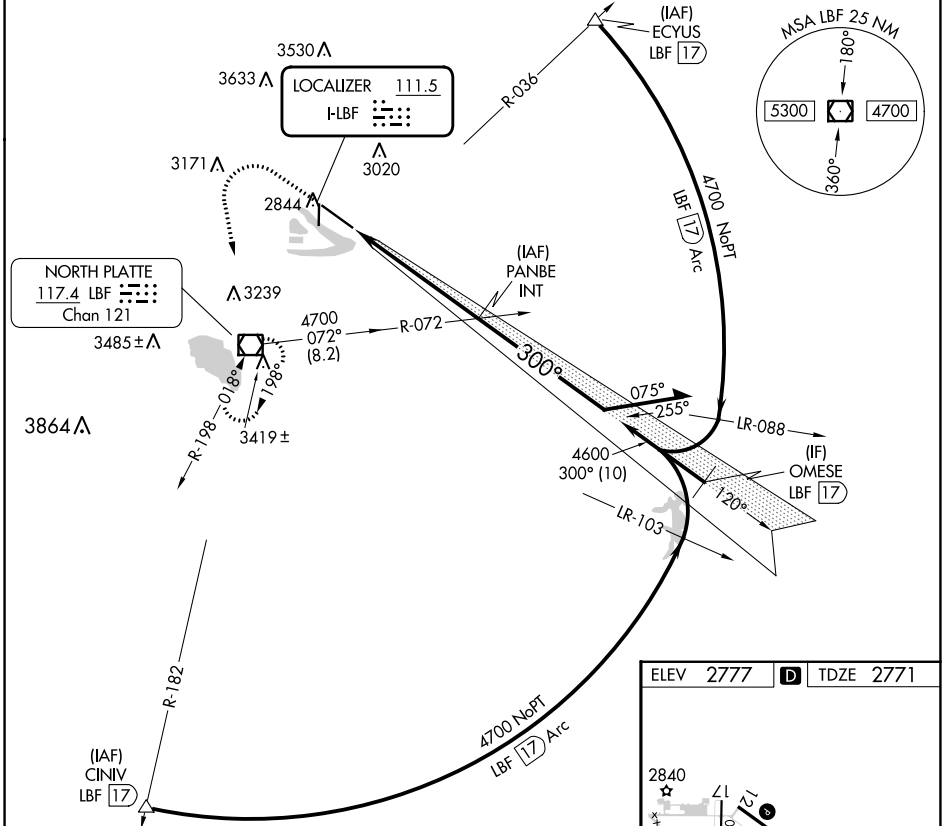
LOC I-LBF 111.5	APP CRS 300°	Rwy Idg TDZE 8001 2771 Apt Elev 2777
---------------------------	------------------------	---

ILS or LOC RWY 30

NORTH PLATTE RGNL/LEE BIRD FLD (LBF)

	MALSR	MISSED APPROACH: Climb to 4900 then left turn direct LBF VOR/DME and hold.

ASOS 118.425	DENVER CENTER 132.7 226.675	CLNC DEL 132.7	UNICOM 123.0 (CTAF)
------------------------	---------------------------------------	--------------------------	-------------------------------



CATEGORY	A	B	C	D
S-ILS 30	2971-1/2 200 (200-1/2)			
S-LOC 30	3280-1	3340-1	3420-1 3/4	3560-2 1/2
	503 (600-1)	563 (600-1)	643 (700-1 3/4)	783 (800-2 1/2)

ELEV 2777	D	TDZE 2771
-----------	---	-----------

HIRL Rwy 12-30	
REIL Rwy 35	
MIRL Rwy 17-35	
FAF to MAP 5.6 NM	
Knots	60 90 120 150 180
Min:Sec	5:36 3:44 2:48 2:14 1:52

NC-2, 31 OCT 2024 to 28 NOV 2024

NC-2, 31 OCT 2024 to 28 NOV 2024