

HI-TACAN Y RWY 28

TACAN NGU Chan 86Y	APCH CRS 290°	Rwy ldg TDZE Arprt Elev 7375 14 15
------------------------------	-------------------------	--

[USN]

NORFOLK NS (CHAMBERS FLD) (KNGU)

RADAR required

SSALF

MISSED APPROACH: Climb to 2300 on NGU
TACAN R-277 then as directed by ATC.

▼ * When ALS inop, increase CAT CDE vis to 1 3/8 miles.
** Circling not authorized S of Rwy 10-28.



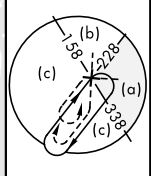
ATIS 118.425 338.225	APP CON 118.9 273.475	CHAMBERS TOWER 124.3 379.15	GND CON 121.8 370.85	ASR/PAR
--------------------------------	---------------------------------	---------------------------------------	--------------------------------	---------

CAUTION:
Do not mistake Norfolk Intl 5 NM SE for
Chambers Fld. Chambers Fld has a single rwy,
Norfolk Intl has int runways.

NORFOLK NS HELIPORT 1 NM NW
Use caution in circling approach.

FAC 464 ft from rwy CL
at 3000 ft from thld.

A 758



CHAMBERS
Chan 86Y NGU

NORFOLK
116.9 ORF
Chan 116

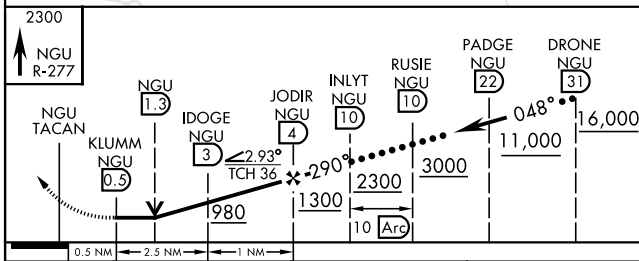
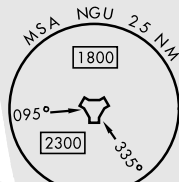
ORF Feeder requires
procedure turn.

RICHMOND
114.1 RIC
Chan 88

RALEIGH DURHAM
117.2 RDU
Chan 119

EMERG SAFE ALT 100 NM 4100

CAUTION: Arc segment
enters KNTU class D airspace.



CATEGORY	C	D	E
S-28 *	460-1	446	(500-1)
CIRCLING **	540-1 1/2 525 (600-1 1/2)	580-2	565 (600-2)

ELEV	15	TDZE	14
------	----	------	----

Rwy 10 ldg 8071'
Rwy 28 ldg 7375'

HIRL Rwy 10-28
REIL Rwy 10-28
TDZL/CL Rwy 10-28

HI-TACAN Y RWY 28