

HI-TACAN Y RWY 10

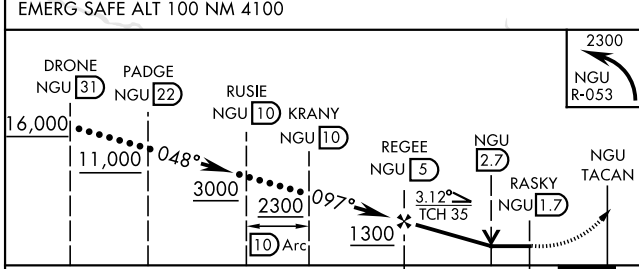
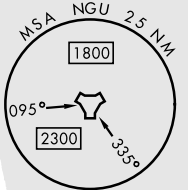
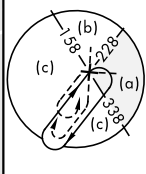
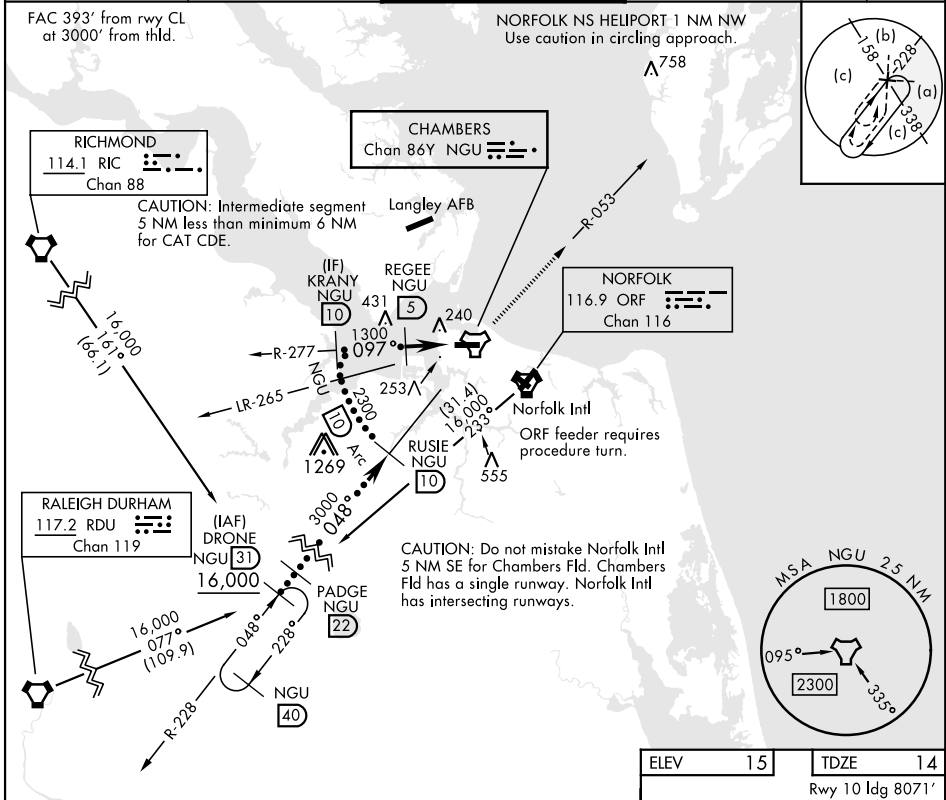
TACAN NGU Chan 86Y	APCH CRS 097°	Rwy ldg 8071 TDZE 14 Arprt Elev 15
------------------------------	-------------------------	---

[USN]

NORFOLK NS (CHAMBERS FLD) (KNGU)

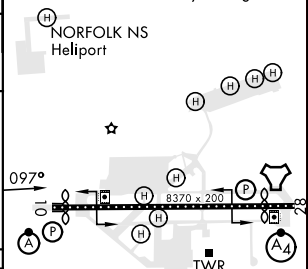
RADAR required * When ALS inop, increase CAT CDE vis to 1½ miles. ** Circling not authorized S of Rwy 10-28.	ALSF-2 	MISSED APPROACH: Climbing left turn to 2300 on NGU TACAN R-053 then as directed by ATC.
--	------------	---

ATIS 118.425 338.225	APP CON 118.9 273.475	CHAMBERS TOWER 124.3 379.15	GND CON 121.8 370.85	ASR/PAR
--------------------------------	---------------------------------	---------------------------------------	--------------------------------	---------



ELEV	15	TDZE	14
------	----	------	----

Rwy 10 ldg 8071'
Rwy 28 ldg 7375'



CATEGORY	C	D	E
S-10*	520-1	506	(600-1)
CIRCLING**	540-1½ 525 (600-1½)	580-2	565 (600-2)

HIRL Rwy 10-28
REIL Rwy 10-28
TDZL/CL Rwy 10-28

HI-TACAN Y RWY 10

NE-3, 03 OCT 2024 TO 31 OCT 2024

NE-3, 03 OCT 2024 TO 31 OCT 2024