

LOC/DME I-PZV 108.5 Chan 22	APP CRS 316°	Rwy Idg 7002 TDZE 7 Apt Elev 21
---	------------------------	--

LOC RWY 31

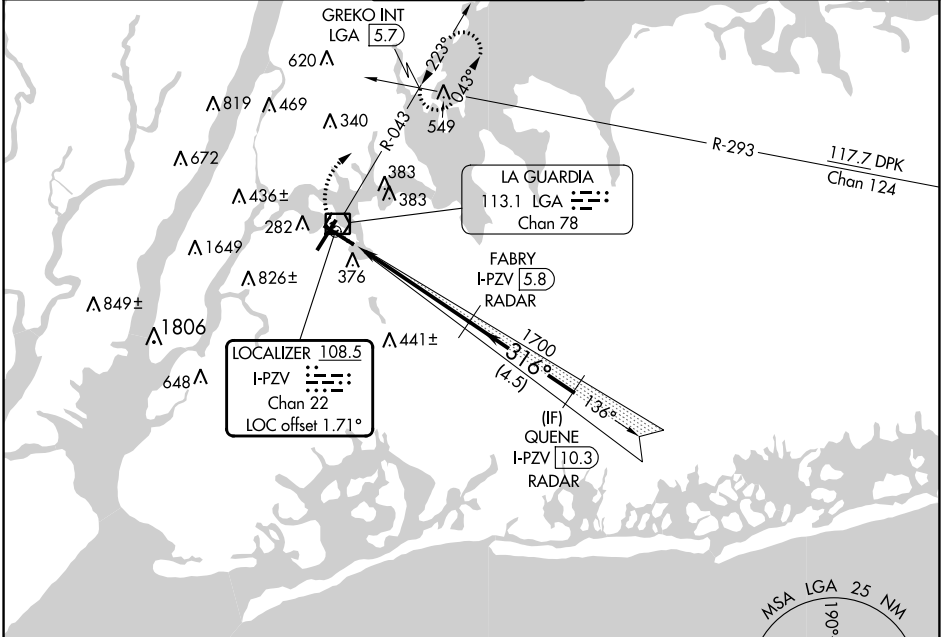
LAGUARDIA (LGA)

RADAR required for procedure entry. DME required.

▼ Rwy 31 helicopter visibility reduction below RVR 4000 NA.
▲ Circling NA northwest of Rwy 4 and southwest of Rwy 13.

MISSED APPROACH: Climbing right turn to 2000 on LGA VOR/DME R-043 to GREKO INT/LGA 5.7 DME and hold, continue climb-in-hold to 2000.

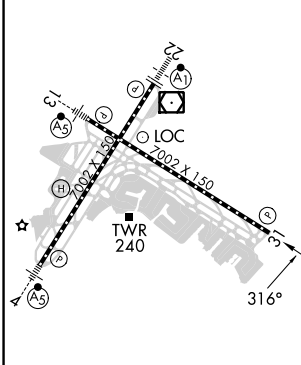
D-ATIS ARR 125.95 D-ATIS DEP 127.05	NEW YORK APP CON 120.8 263.0	LAGUARDIA TOWER 118.7 263.0	GND CON 121.7 263.0	CLNC DEL 135.2	CPDLC
--	--	---------------------------------------	-------------------------------	--------------------------	-------



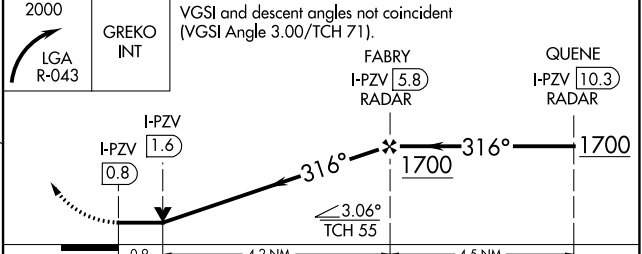
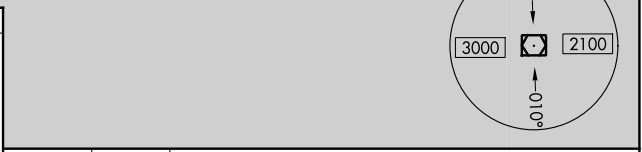
NE-2, 03 OCT 2024 to 31 OCT 2024

NE-2, 03 OCT 2024 to 31 OCT 2024

ELEV 21	D	TDZE 7
---------	----------	--------



TDZ/CL Rws 4, 13 and 22
 HIRL Rws 4-22 and 13-31
 REIL Rwy 31



2000 LGA R-043	GREKO INT	VGSIs and descent angles not coincident (VGSi Angle 3.00/TCH 71).	
I-PZV (0.8)	I-PZV (1.6)	FABRY I-PZV (5.8) RADAR	QUENE I-PZV (10.3) RADAR
0.9	4.2 NM	4.5 NM	1700
CATEGORY	A	B	C
S-31	600/55	593 (600-1)	600-1¾ 593 (600-1¾)
C CIRCLING	700-1	679 (700-1)	1080-3 1059 (1100-3) 1260-3 1239 (1300-3)