

VOR/DME IGN 117.6 Chan 123	APP CRS 242°	Rwy Idg TDZE Apt Elev 164	N/A N/A 164
--	------------------------	---	--

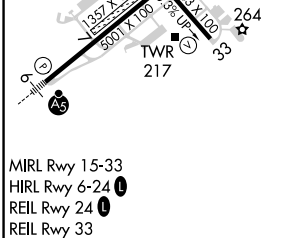
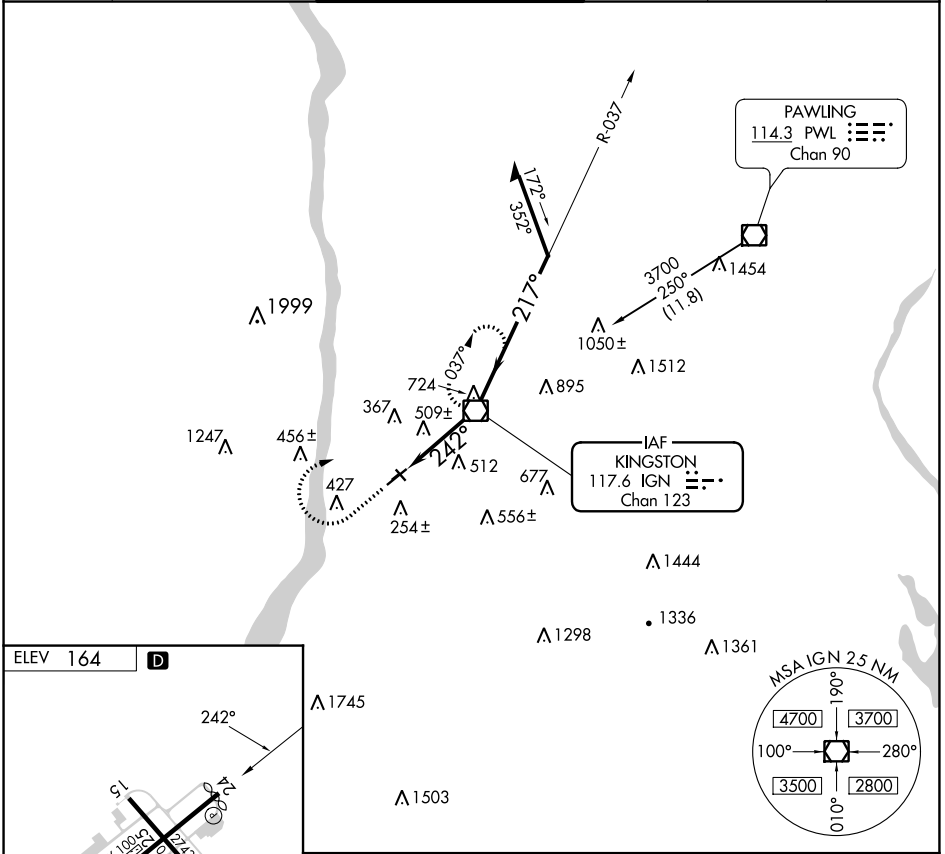
VOR-A

HUDSON VALLEY RGNL (POU)

⚠ Circling NA to Rwys 7 and 25. Circling Rwy 15, 33 NA at night.
⚠ Rwy 15, 33 helicopter visibility reduction below 1 SM NA. When local altimeter not received, use Montgomery altimeter setting and increase all MDAs 80 feet and visibility Cat C ¼ SM.

MISSED APPROACH: Climb to 1500 then climbing right turn to 3000 direct IGN VOR/DME and hold, continue climb-in-hold to 3000.

ATIS 126.75	NEW YORK APP CON 132.75 363.1	DUTCHESS COUNTY TOWER * 124.0 (CTAF) 0 269.15	GND CON 121.8	CLNC DEL 121.8	UNICOM 122.95
-----------------------	---	--	-------------------------	--------------------------	-------------------------



FAF to MAP 3.3 NM					
Knots	60	90	120	150	180
Min:Sec	3:18	2:12	1:39	1:19	1:06

1500	3000	IGN	Remain within 10 NM		
CATEGORY	A	B	C	D	
CIRCLING	760-1 596 (600-1)	840-1 676 (700-1)	940-2¼ 776 (800-2¼)	1080-3 916 (1000-3)	

NE-2, 05 SEP 2024 to 03 OCT 2024

NE-2, 05 SEP 2024 to 03 OCT 2024