

STADIUM VISUAL RWY 29

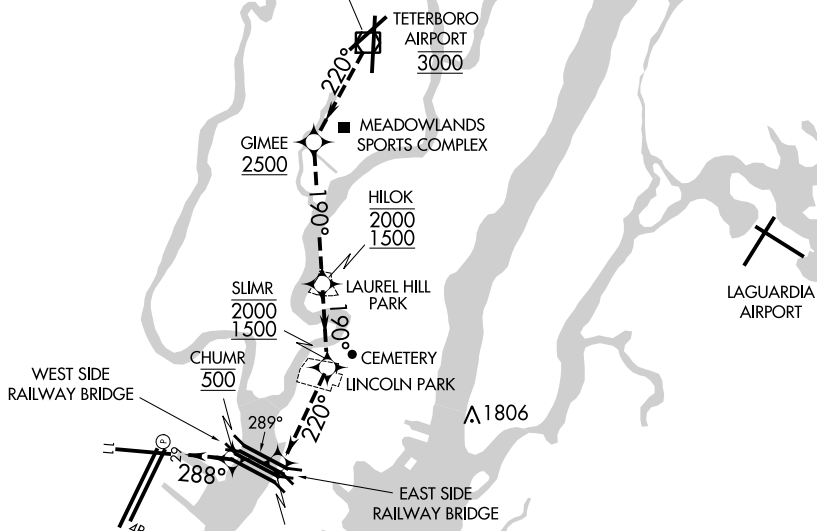
AL-285 (FAA)

NEWARK LIBERTY INTL (EWR)
NEWARK, NEW JERSEY

D-ATIS
 115.7 134.825
 NEW YORK APP CON
 128.55 379.9
 NEWARK TOWER
 118.3 257.6
 GND CON
 121.8
 CLNC DEL
 118.85
 CPDLC

TETERBORO
 108.4 TEB ...
 Chan 21

Vertical Guidance Navaid and Angle:
 Rwy 29 PAPI 3.00°



NE-2, 08 AUG 2024 to 05 SEP 2024

NE-2, 08 AUG 2024 to 05 SEP 2024

RADAR REQUIRED

- NOTE: ALERT RUNWAY 29: Use caution when turning on final approach to ensure you are correctly aligned with Rwy 29.
- NOTE: PAPI's are located on the right side of Rwy 29 between Rwy 29 and taxiway Z. Do not confuse taxiway Z with Rwy 29.
- NOTE: When Rwy 29 REILs or PAPIs are inoperative, procedure NA at night.
- NOTE: All altitudes are for noise abatement.

Weather Minima: 3500 feet ceiling
 and 5 miles visibility.

NM	1	2	3	4	5	6	7	8	9	10	11	12	13	14	15	16	17	18	19
----	---	---	---	---	---	---	---	---	---	----	----	----	----	----	----	----	----	----	----

STADIUM VISUAL RUNWAY 29

When cleared for the Stadium Visual Approach proceed direct to Teterboro Airport/VOR DME and cross it at 3000' proceed on 220° heading to west end of Meadowland Sports Complex (GIMEE). Cross GIMEE at or above 2500'. Turn left at the west end of Meadowland Sports Complex (GIMEE) on heading 190° and continue along left (east) side of river to Laurel Hill Park (HILOK), cross HILOK between 2000' and 1500'. Continue along left (east) size of river heading 190° to Lincoln Park (SLIMR). Cross SLIMR between 2000' and 1500'. Continue southwest along the east side heading 220° to the east side of the railway bridge (COPKO) at or above 700' then turn right heading 288° to cross the west side of the railway bridge (CHUMR) at 500'. Plan to be in final landing configuration by Lincoln Park.

STADIUM VISUAL RWY 29

40°42'N-74°10'W

NEWARK, NEW JERSEY
NEWARK LIBERTY INTL (EWR)