

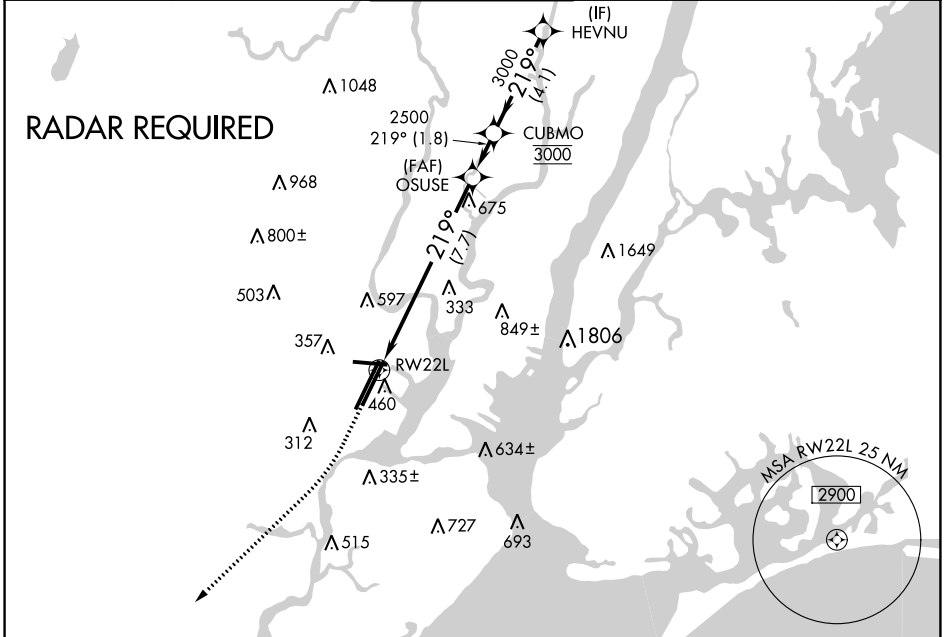
APP CRS	Rwy Idg	8207
219°	TDZE	11
	Apt Elev	17

RNAV (RNP) Y RWY 22L

NEWARK LIBERTY INTL (EWR)

RNP AR APCH - GPS.	ALSF-2 	MISSED APPROACH: Climb to 600 then climbing right turn to 3000 direct KILMA and hold.
For uncompensated Baro-VNAV systems, procedure NA below -13°C or above 54°C.		

D-ATIS 115.7 134.825	NEW YORK APP CON 128.55 379.9	NEWARK TOWER 118.3 257.6	GND CON 121.8	CLNC DEL 118.85	CPDLC
--------------------------------	---	------------------------------------	-------------------------	---------------------------	-------

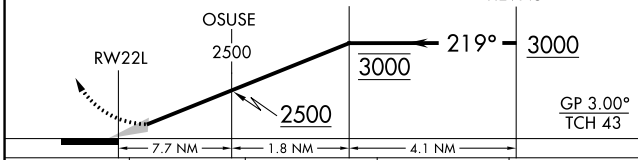


NE-2, 08 AUG 2024 to 05 SEP 2024

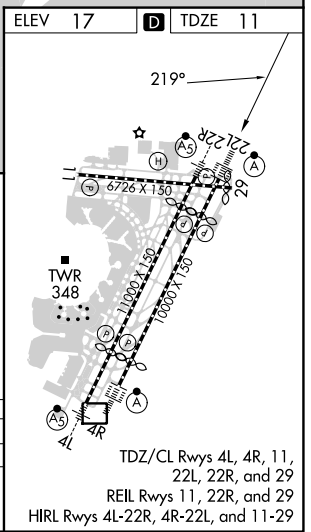
NE-2, 08 AUG 2024 to 05 SEP 2024



ELEV 17	TDZE 11
600	3000
KILMA	VGSI and RNAV glidepath not coincident (VGSI Angle 3.00/TCH 60).



CATEGORY	A	B	C	D
RNP 0.30 DA	462/50		451 (500-1)	
AUTHORIZATION REQUIRED				



RNAV (RNP) Y RWY 22L