

APP CRS	Rwy Idg	6726
108°	TDZE	17
	Apt Elev	17

RNAV (GPS) RWY 11

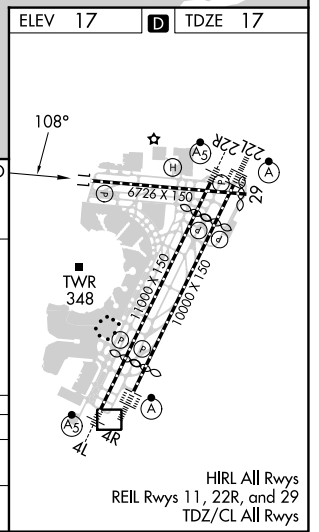
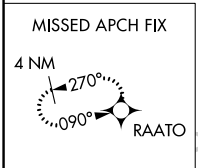
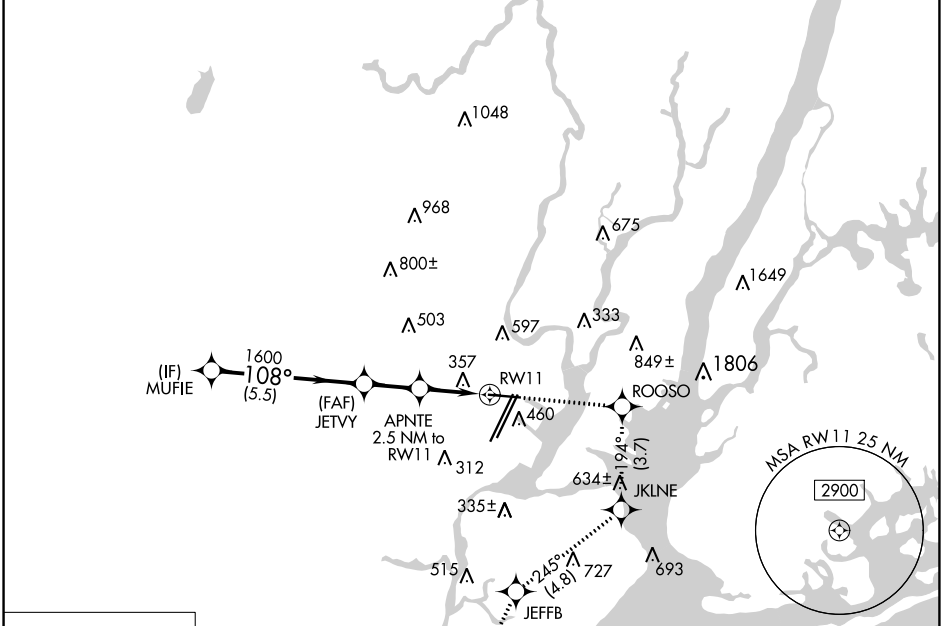
NEWARK LIBERTY INTL (EWR)

RNP APCH - GPS.

▼ Circling NA south of Rwy 11-29. When Circling to Rwy 29 at night, operational VGSJ required, remain on or above VGSJ glidepath until threshold. Rwy 11 helicopter visibility reduction below RVR 4000 NA.

MISSED APPROACH: (Do not exceed 230K until JKLNE) Climb to 2000 direct ROOSO and right turn on track 194° to JKLNE and right turn on track 245° to JEFFB and left turn on track 218° to RAATO and hold.

D-ATIS	NEWARK APP CON	NEWARK TOWER	GND CON	CLNC DEL	CPDLC
115.7 134.825	128.55 379.9	118.3 257.6	121.8	118.85	



	MUFIE	2000 ROOSO	JKLNE	JEFFB	RAATO
	↑	↑	tr 194°	tr 245°	tr 218°
	2000	1600	920		
	5.5 NM	2 NM	0.8 NM	1.7 NM	
CATEGORY	A	B	C	D	
LNVA MDA	620/55	603 (700-1)	620-1¾	603 (700-1¾)	
C CIRCLING	660-1	643 (700-1)	900-2¾ 883 (900-2¾)	900-3 883 (900-3)	

NE-2, 31 OCT 2024 to 28 NOV 2024

NE-2, 31 OCT 2024 to 28 NOV 2024